

Datasheet for ABIN6655214

anti-Progesterone Receptor antibody (AA 412-526)[2 Images](#)[2 Publications](#)[Go to Product page](#)

Overview

Quantity:	100 µL
Target:	Progesterone Receptor (PGR)
Binding Specificity:	AA 412-526
Reactivity:	Human
Host:	Rabbit
Clonality:	Monoclonal
Conjugate:	This Progesterone Receptor antibody is un-conjugated
Application:	Western Blotting (WB), Immunohistochemistry (IHC), ELISA

Product Details

Purpose:	Progesterone Receptor Antibody
Immunogen:	Anti-Progesterone Receptor monoclonal antibody was produced by repeated immunizations with a recombinant protein corresponding to amino acid residues 412-526 of human Progesterone Receptor protein. The hybridoma was produced by fusing New Zealand White rabbit splenocytes and myeloma cells using conventional technology.
Clone:	SP2
Isotype:	IgG
Cross-Reactivity (Details):	The antibody is specific for human Progesterone Receptor protein.
Purification:	This product is clarified tissue culture supernate.
Sterility:	Sterile filtered

Target Details

Target:	Progesterone Receptor (PGR)
Alternative Name:	Progesterone Receptor (PGR Products)
Background:	<p>Synonyms: rabbit anti-Progesterone Receptor Antibody, PgR, PR, nuclear receptor subfamily 3 group C member 3</p> <p>Background: The PGR gene encodes a member of the steroid receptor superfamily referred to as progesterone receptor (also known as PgR, PR and nuclear receptor subfamily 3 group C member 3). Progesterone receptor mediates the physiological effects of progesterone, which plays a central role in reproductive events associated with the establishment and maintenance of pregnancy. This gene uses two distinct promoters and translation start sites in the first exon to produce two isoforms, A and B. The two isoforms are identical except for the additional 165 amino acids found in the N-terminus of isoform A only, and mediate their own response genes and physiologic effects with little overlap. Ideal for Cancer, Chromatin & Nuclear Signaling and Signal Transduction research.</p> <p>Gene Name: PGR</p>
Gene ID:	5241
UniProt:	P06401
Pathways:	Nuclear Receptor Transcription Pathway , Intracellular Steroid Hormone Receptor Signaling Pathway , Steroid Hormone Mediated Signaling Pathway , Smooth Muscle Cell Migration

Application Details

Application Notes:	<p>ELISA_Dilution: 1:10,000</p> <p>Immunohistochemistry_Dilution: 1:400</p> <p>Western_Blot_Dilution: 1:200-1:500</p>
Comment:	<p>This monoclonal antibody contains TBS/1% BSA. Anti-Progesterone Receptor has been tested in IHC and is suitable for ELISA and western blotting. Specific conditions for reactivity should be optimized by the end user. Expect a band approximately 116 kDa in size corresponding to PgR isoform B (the 'canonical' sequence) protein by western blotting in the appropriate cell lysate or extract. Progesterone Receptor is found in human Breast ductal carcinoma and is a nuclear protein. For immunohistochemistry, samples should be formalin fixed and paraffin embedded. Deparaffinize slides using xylene or xylene alternatives and graded alcohols. Staining requires boiling of sections in 10 mM citrate buffer pH 6.0 for 10 min followed by cooling at RT for 20 min.</p>
Restrictions:	For Research Use only

Handling

Format:	Liquid
Buffer:	Buffer: See application note. Stabilizer: 10 mg/mL Bovine Serum Albumin (BSA) - Immunoglobulin and Protease free Preservative: 0.1 % (w/v) Sodium Azide
Preservative:	Sodium azide
Precaution of Use:	This product contains Sodium azide: a POISONOUS AND HAZARDOUS SUBSTANCE which should be handled by trained staff only.
Storage:	4 °C
Storage Comment:	Store at 2-8°C. Do not freeze. The user must validate any other storage conditions. When properly stored, the reagent is stable to the date indicated on the label. Do not use the reagent beyond the expiration date.
Expiry Date:	6 months

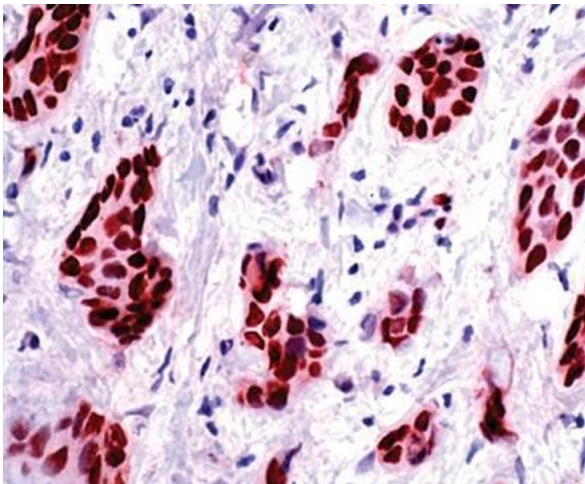
Publications

Product cited in:	<p>Huang, Zhu, Szekeres, Xia: "Development of new rabbit monoclonal antibody to estrogen receptor: immunohistochemical assessment on formalin-fixed, paraffin-embedded tissue sections." in: Applied immunohistochemistry & molecular morphology : AIMM, Vol. 13, Issue 1 , pp. 91-5, (2005) (PubMed).</p> <p>Cano, Milanezi, Leitão, Ricardo, Brito, Schmitt: "Estimation of hormone receptor status in fine-needle aspirates and paraffin-embedded sections from breast cancer using the novel rabbit monoclonal antibodies SP1 and SP2." in: Diagnostic cytopathology, Vol. 29, Issue 4, pp. 207-11, (2004) (PubMed).</p>
-------------------	--



Immunohistochemistry

Image 1. Anti Progesterone Receptor (PR) monoclonal antibody - Immunohistochemistry. Immunohistochemistry of Progesterone Receptor (PR) monoclonal antibody. Tissue: formalin-fixed, paraffin-embedded normal Human Fallopian Tube.



Immunohistochemistry

Image 2. Anti Progesterone Receptor monoclonal antibody - Immunohistochemistry. Immunohistochemistry of Progesterone Receptor (PR) monoclonal antibody. Tissue: formalin-fixed, paraffin-embedded Human Breast Carcinoma. Staining: Nuclear localization.