



[Go to Product page](#)

Datasheet for ABIN6655223

anti-TASP1 antibody (Internal Region, N-Term)

2 Images

Overview

Quantity:	100 µL
Target:	TASP1
Binding Specificity:	Internal Region, N-Term
Reactivity:	Human
Host:	Rabbit
Clonality:	Polyclonal
Conjugate:	This TASP1 antibody is un-conjugated
Application:	Western Blotting (WB), ELISA

Product Details

Immunogen:	Immunogen: Anti-TASP1 Antibody was produced in rabbits by repeated immunizations with three different synthetic peptides of human TASP1: two containing an amino acid sequence from the N-terminal region of the protein and one containing an amino acid sequence from the internal region of the protein. Immunogen Type: Peptide
Cross-Reactivity (Details):	Cross reactivity with TASP1 from other species not tested.
Purification:	Anti-TASP1 Antibody is monospecific antiserum processed by delipidation and defibrination followed by sterile filtration.

Target Details

Target:	TASP1
---------	-------

Target Details

Alternative Name: TASP1 ([TASP1 Products](#))

Background: Synonyms: Threonine aspartase 1, Taspase-1
Background: TASP1 is an endopeptidase which cleaves specific substrates after an aspartate residue. It is required for the posttranslational processing of MLL, a histone methyl transferase which is essential for the maintenance of HOX gene expression and for the transcription factor TFIIA. Therefore, TASP1 may have an important function in the regulation of gene transcription and embryonic development. Anti-TASP1 Antibody is ideal for research in Cell Differentiation and Development, Gene Expression and Epigenetics.
Gene Name: TASP1

Gene ID: 55617

NCBI Accession: [NP_060184](#)

UniProt: [Q9H6P5](#)

Application Details

Application Notes: Application Note: Anti-TASP1 Antibody is suitable for ELISA and Western Blots. Specific conditions for reactivity should be optimized by the end user. Expect a band approximately 44.5 kDa in the appropriate cell lysate or extract.
ELISA Dilution: 1:1,000
Western Blot Dilution: 1:500

Restrictions: For Research Use only

Handling

Format: Liquid

Buffer: 0.01 % (w/v) Sodium Azide
Stabilizer: None

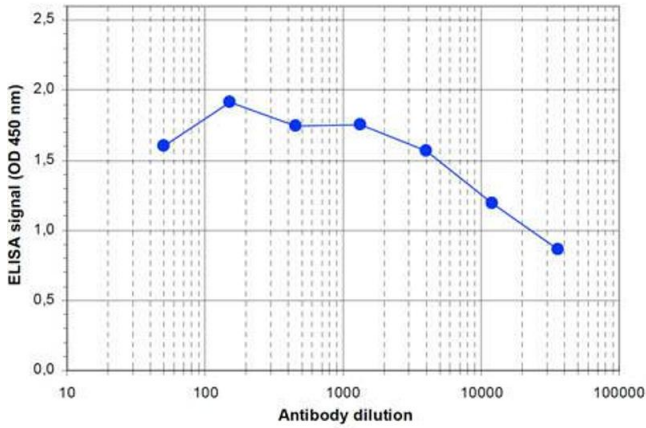
Preservative: Sodium azide

Precaution of Use: This product contains Sodium azide: a POISONOUS AND HAZARDOUS SUBSTANCE which should be handled by trained staff only.

Storage: RT, 4 °C, -20 °C

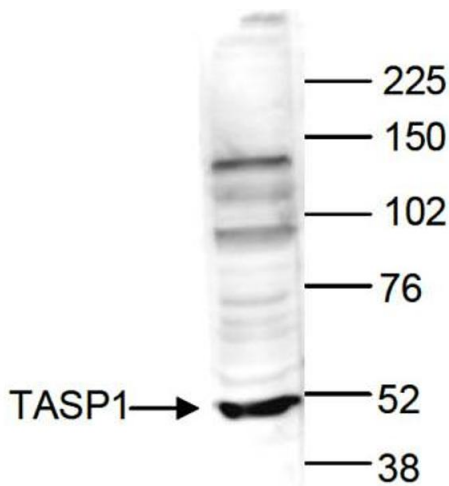
Storage Comment: Store vial at -20° C prior to opening. Aliquot contents and freeze at -20° C or below for extended storage. Avoid cycles of freezing and thawing. Centrifuge product if not completely clear after

standing at room temperature. This product is stable for several weeks at 4° C as an undiluted liquid. Dilute only prior to immediate use.



ELISA

Image 1. ELISA of anti-TASP1 antibody ELISA results of Rabbit anti-TASP1 antibody. Antigen: BSA conjugated TASP1. Coating amount: 0.1 µg per well. Dilution series: serial dilution. Estimated Antibody Titer to be 1:43,500. Substrate: TMB .



Western Blotting

Image 2. Western Blot of anti-TASP1 antibody Western Blot results of Rabbit anti-TASP1 antibody. Lane 1: HeLa nuclear extract cells. Load: 40 µg per lane. Primary antibody: TASP1 antibody at 1:500 for overnight at 4°C. Secondary antibody: goat anti-rabbit HRP secondary antibody at 1:10,000 for 45 min at RT. Block: 5% Blotto/TBS-Tween overnight at 4°C. Predicted: 44.5kDa.