



[Go to Product page](#)

Datasheet for ABIN6655238

## anti-ZBTB38 antibody (C-Term, Internal Region)

### 2 Images

#### Overview

Quantity:	100 µL
Target:	ZBTB38
Binding Specificity:	C-Term, Internal Region
Reactivity:	Human
Host:	Rabbit
Clonality:	Polyclonal
Conjugate:	This ZBTB38 antibody is un-conjugated
Application:	Western Blotting (WB), ELISA

#### Product Details

Immunogen:	Immunogen: Anti-ZBTB38 Antibody was produced in rabbits by repeated immunizations with three different synthetic peptides of human ZBTB38: two containing an amino acid sequence from the internal region of the protein and one containing an amino acid sequence from the C-terminal region of the protein. Immunogen Type: Peptide
Cross-Reactivity (Details):	Cross reactivity with ZBTB38 from other species not tested.
Purification:	Anti-ZBTB38 Antibody is monospecific antiserum processed by delipidation and defibrination followed by sterile filtration.

#### Target Details

Target:	ZBTB38
---------	--------

## Target Details

---

Alternative Name: ZBTB38 ([ZBTB38 Products](#))

---

Background: Synonyms: Zinc finger and BTB domain containing 38, CIBZ  
Background: ZBTB38 is a methyl CpG binding protein that binds to DNA sequences containing a single methylated CpG, thereby acting as a transcriptional repressor. It has been found to be highly expressed in the brain and may be involved in the differentiation of late postmitotic neurons. Anti-ZBTB38 Antibody is ideal for research in Epigenetics, Gene Expression and Neuroscience.  
Gene Name: ZBTB38

---

Gene ID: 253461

---

NCBI Accession: [NP\\_001073881](#)

---

UniProt: [Q8NAP3](#)

---

## Application Details

---

Application Notes: Application Note: Anti-ZBTB38 Antibody is suitable for ELISA and Western Blots. Specific conditions for reactivity should be optimized by the end user. Expect a band approximately 138 kDa in the appropriate cell lysate or extract.  
ELISA Dilution: 1:100 - 1:1,000  
Western Blot Dilution: 1:1,000

---

Restrictions: For Research Use only

---

## Handling

---

Format: Liquid

---

Buffer: 0.01 % (w/v) Sodium Azide  
Stabilizer: None

---

Preservative: Sodium azide

---

Precaution of Use: This product contains Sodium azide: a POISONOUS AND HAZARDOUS SUBSTANCE which should be handled by trained staff only.

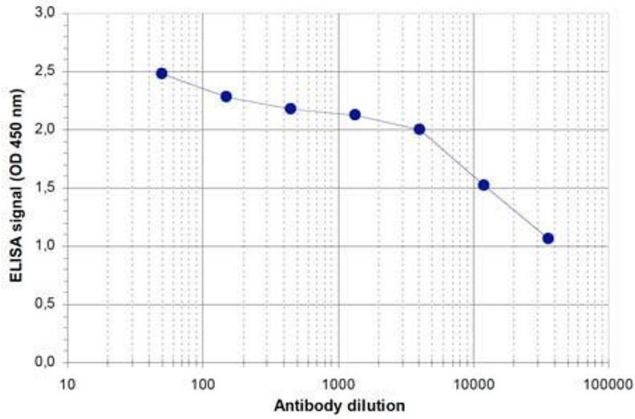
---

Storage: RT,4 °C,-20 °C

---

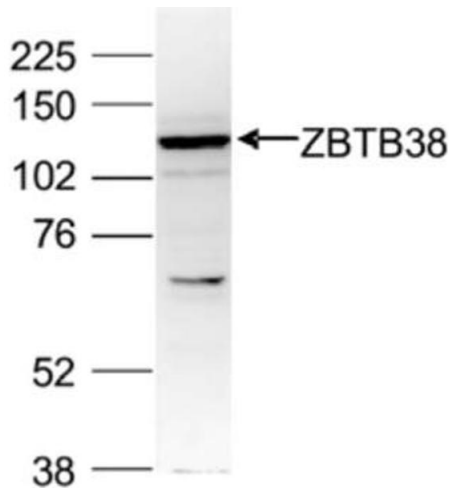
Storage Comment: Store vial at -20° C prior to opening. Aliquot contents and freeze at -20° C or below for extended storage. Avoid cycles of freezing and thawing. Centrifuge product if not completely clear after standing at room temperature. This product is stable for several weeks at 4° C as an undiluted

liquid. Dilute only prior to immediate use.



### ELISA

**Image 1.** ELISA of anti-ZBTB38 antibody ELISA results of Rabbit anti-ZBTB38 antibody. Antigen: BSA conjugated ZBTB38. Coating amount: 0.1 µg per well. Dilution series: serial dilution. Estimated Antibody Titer to be 1:26,000. Substrate: TMB .



### Western Blotting

**Image 2.** Western Blot of anti-ZBTB38 antibody Western Blot results of Rabbit anti-ZBTB38 antibody. Lane 1: HeLa nuclear extract lysates. Load: 40 µg per lane. Primary antibody: ZBTB38 antibody at 1:1,000 for overnight at 4°C. Secondary antibody: goat anti-rabbit HRP secondary antibody at 1:10,000 for 45 min at RT. Block: 5% Blotto/TBS-Tween overnight at 4°C. Predicted: 138kDa.