

Datasheet for ABIN6655271  
**anti-MECP2 antibody (C-Term)**



[Go to Product page](#)

3 Images

## Overview

Quantity:	50 µg
Target:	MECP2
Binding Specificity:	C-Term
Reactivity:	Human
Host:	Rabbit
Clonality:	Polyclonal
Conjugate:	This MECP2 antibody is un-conjugated
Application:	Western Blotting (WB), ELISA, Chromatin Immunoprecipitation (ChIP)

## Product Details

Immunogen:	Immunogen: Anti-MeCP2 Antibody was produced in rabbits by repeated immunizations with a synthetic peptide containing the C-terminal region of human MeCP2. Immunogen Type: Peptide
Isotype:	IgG
Purification:	Anti-MeCP2 Antibody was purified by affinity purification. This product reacts with human MeCP2. Cross reactivity with MeCP2 from species other than human is not known.

## Target Details

Target:	MECP2
Alternative Name:	MeCP2 ( <a href="#">MECP2 Products</a> )
Background:	Synonyms: Methyl-CpG-binding protein 2, MeCP-2 protein, AUTSX3, MRX16, MRX79, MRXS13,

## Target Details

---

MRXSL, PPMX, RTS, RTT

Background: MeCP2 is a chromosomal protein with abundant binding sites in the chromatin. It belongs to the family of methyl CpG binding proteins which also comprises MBD1, MBD2, MBD3 and MBD4. MeCP2 can bind specifically to methylated promoters, thereby repressing transcription. This transcriptional repression is mediated through interaction with histone deacetylase and the corepressor SIN3A. MeCP2 also is essential for development. Mutations in MeCP2 are the cause of several types of mental retardation including Rett syndrome, a progressive neurological disorder that causes mental retardation in females and mental retardation syndromic X-linked type 13, and may also be involved in Angelman syndrome and susceptibility to some types of autism. Anti-MeCP2 Antibody is ideal for research in Epigenetics, Embryonic Development and Neuroscience.

Gene Name: MECP2

---

Gene ID: 4204

---

NCBI Accession: [NP\\_001104262](#)

---

UniProt: [P51608](#)

---

Pathways: [Inositol Metabolic Process, Chromatin Binding, Synaptic Membrane](#)

## Application Details

---

Application Notes: Application Note: Anti-MeCP2 Antibody is suitable for Chromatin Immunoprecipitation, ELISA and Western Blots. Specific conditions for reactivity should be optimized by the end user. Expect a band approximately 70 kDa in the appropriate cell lysate or extract.

ChIP Dilution: 5 µg per IP

ELISA Dilution: 1:1,000

Western Blot Dilution: 1:1,000

---

Restrictions: For Research Use only

## Handling

---

Format: Liquid

---

Buffer: Buffer: 0.01 M Sodium Phosphate, 0.25 M Sodium Chloride, pH 7.2  
0.05 % (w/v) Sodium Azide and 0.05 % ProClin 300/p>  
Stabilizer: None

---

Preservative: ProClin, Sodium azide

---

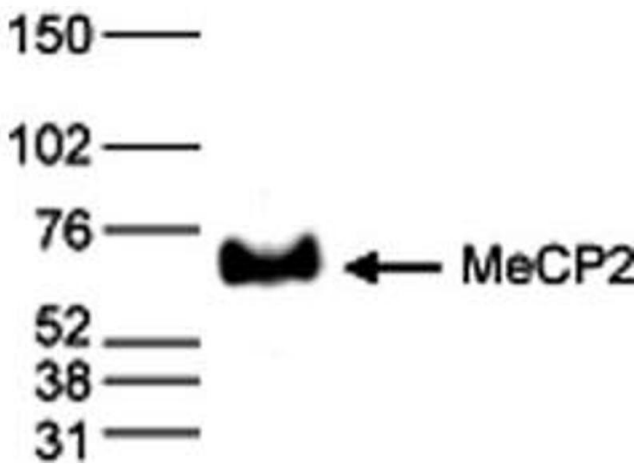
## Handling

Precaution of Use: This product contains Sodium azide and ProClin: POISONOUS AND HAZARDOUS SUBSTANCES which should be handled by trained staff only.

Storage: RT, 4 °C, -20 °C

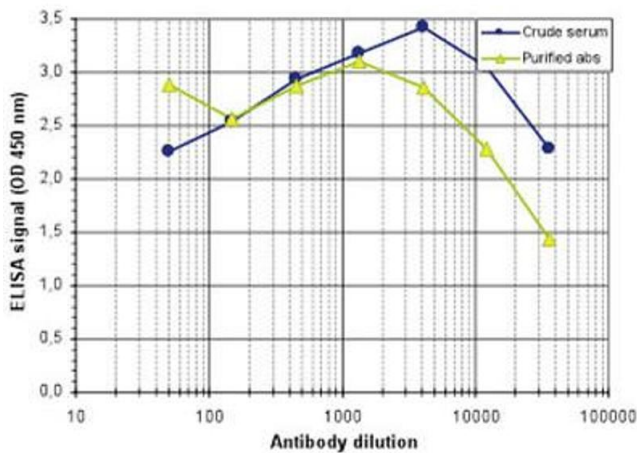
Storage Comment: Store vial at -20° C prior to opening. Aliquot contents and freeze at -20° C or below for extended storage. Avoid cycles of freezing and thawing. Centrifuge product if not completely clear after standing at room temperature. This product is stable for several weeks at 4° C as an undiluted liquid. Dilute only prior to immediate use.

## Images



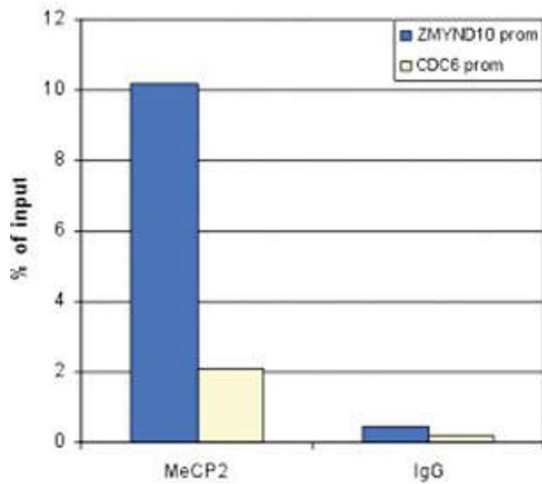
### Western Blotting

**Image 1.** Western Blot results of Rabbit anti-MeCP2 antibody. Lane 1: HeLa nuclear extracts. Load: 40 µg. Primary antibody: anti-MeCP2 antibody at 1:1,000 overnight at 4°C. Secondary Antibody: anti-rabbit HRP at 1:10,000 for 1 hr at RT. Block: TBS-Tween / 5% BLOTTO.



### ELISA

**Image 2.** ELISA results of Rabbit anti-MeCP2 antibody. Antigen: BSA conjugated MeCP2 peptide. Coating amount: 0.1 µg per well. Primary Antibody: MeCP2 antibody and crude serum. Dilution series: serial dilution. Estimated Antibody Titer to be 1:32,900. Substrate: TMB.



### Chromatin Immunoprecipitation

**Image 3.** Chromatin Immunoprecipitation Anti-MeCP2 antibody Chromatin Immunoprecipitation performed with rabbit Anti-MeCP2 antibody. ChIP assays were performed using human osteosarcoma (U2OS) cells, the antibody against MeCP2, and optimized PCR primer sets. Sheared chromatin from  $1 \times 10^6$  cells and  $5 \mu\text{g}$  of antibody were used per ChIP experiment. IgG ( $1 \mu\text{g}/\text{IP}$ ) was used as a negative IP control. Quantitative PCR was performed with primers for the promoters of the ZMYND10 gene (used as a positive control) and CDC6 gene (used as a negative control). This image displays the recovery, expressed as a % of input (the relative amount of immunoprecipitated DNA compared to input DNA after qPCR analysis).