

Datasheet for ABIN6655290
anti-BCL3 antibody (C-Term)[Go to Product page](#)

4 Images

Overview

Quantity:	100 µg
Target:	BCL3
Binding Specificity:	C-Term
Reactivity:	Human
Host:	Rabbit
Clonality:	Polyclonal
Conjugate:	This BCL3 antibody is un-conjugated
Application:	Western Blotting (WB), ELISA, Immunohistochemistry (IHC), Flow Cytometry (FACS), Immunoprecipitation (IP), Fluorescence Microscopy (FM)

Product Details

Immunogen:	Immunogen: Anti-BCL3 antibody was prepared from whole rabbit serum produced by repeated immunizations with a synthetic peptide corresponding to a C-Term portion of human BCL3 conjugated to Keyhole Limpet Hemocyanin (KLH). Immunogen Type: Peptide
Isotype:	IgG
Purification:	This affinity purified antibody is directed against human BCL3. This product was affinity purified from monospecific antiserum by immunoaffinity purification. Blast analysis of the sequence of the immunogen shows 100% identity with human.

Target Details

Target:	BCL3
Alternative Name:	BCL3 (BCL3 Products)
Background:	<p>Synonyms: rabbit anti-BCL3 antibody, rabbit anti-BCL-3 Antibody, BCL 3, B-cell lymphoma 3 protein, B-cell lymphoma 3 protein Antibody</p> <p>Background: BCL3 belongs to the ANKRD family. The protein contains seven ankyrin repeats, which are closely related to those found in I kappa B proteins. BCL3 functions as a transcriptional co-activator, regulator of transcriptional activation, promotor of transcription, and inhibitor of nuclear translocation of NF-kappa B. It is a proto-oncogene identified by its translocation into the immunoglobulin alpha-locus in some cases of B-cell leukemia. BCL3 contributes to the regulation of cell proliferation. Therefore, BCL3 may be associated with B-cell chronic lymphocytic leukemia, lymphoma, or other hematologic diseases. Anti-BCL3 Antibody is useful for researchers interested in Cancer Research, NF-Kappa B Pathway, and TNF Signaling Pathway.</p> <p>Gene Name: BCL3</p>
Gene ID:	602
NCBI Accession:	NP_005169
UniProt:	P20749
Pathways:	NF-kappaB Signaling , Maintenance of Protein Location , Protein targeting to Nucleus

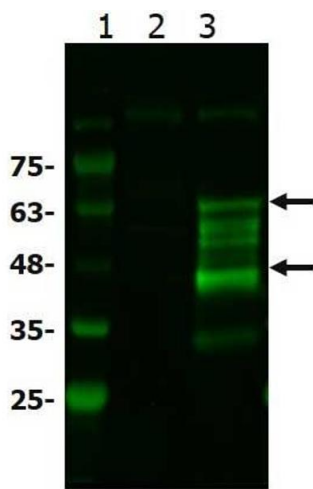
Application Details

Application Notes:	<p>Immunohistochemistry Dilution: 1:200</p> <p>Application Note: Anti-BCL-3 Antibody has been tested in Western Blot, ELISA, and Immunofluorescence. Expect a band at 47.5 kDa in western blot using appropriate lysates. Positive control used recombinant BCL3 protein, HEK293T overexpressing BCL3 or U87 whole cell lysates at 1 µg/mL in WB, and U87MG with PFA at 10 µg/mL in IF. Although not tested, this antibody is likely functional in immunohistochemistry, flow cytometry, and immunoprecipitation.</p> <p>Immunoprecipitation Dilution: User Optimized</p> <p>ELISA Dilution: 5.0 µg/mL</p> <p>Flow Cytometry Dilution: User Optimized</p> <p>Western Blot Dilution: 1:1000</p> <p>IF Microscopy Dilution: 10 µg/mL</p>
Restrictions:	For Research Use only

Handling

Format:	Liquid
Buffer:	Buffer: 0.02 M Potassium Phosphate, 0.15 M Sodium Chloride, pH 7.2 0.01 % (w/v) Sodium Azide Stabilizer: None
Preservative:	Sodium azide
Precaution of Use:	This product contains Sodium azide: a POISONOUS AND HAZARDOUS SUBSTANCE which should be handled by trained staff only.
Storage:	RT,4 °C,-20 °C
Storage Comment:	Store vial at -20° C prior to opening. Aliquot contents and freeze at -20° C or below for extended storage. Avoid cycles of freezing and thawing. Centrifuge product if not completely clear after standing at room temperature. This product is stable for several weeks at 4° C as an undiluted liquid. Dilute only prior to immediate use.

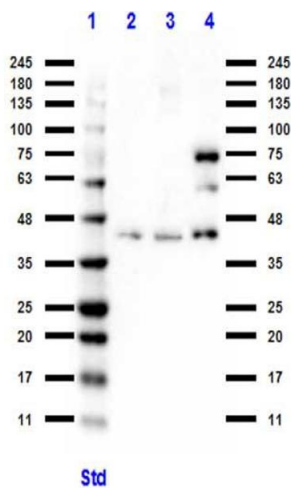
Images



Western Blotting

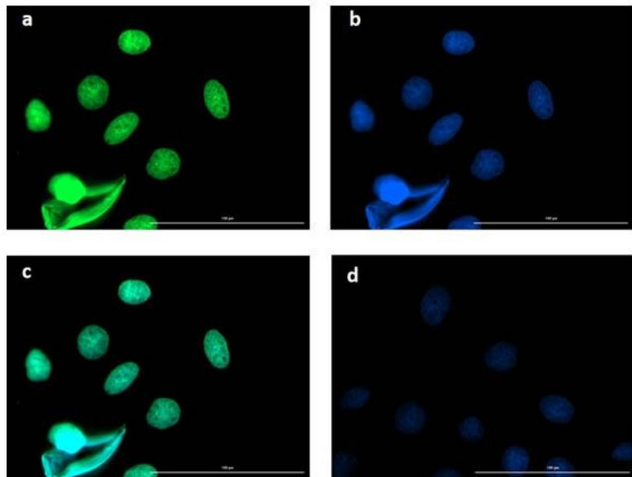
Image 1. Western Blot of Rabbit anti-BCL3 antibody

Western Blot of Rabbit anti-BCL3 antibody. Lane 1: MW ladder . Lane 2: HEK293T WCL. Lane 3: BCL3 overexpressing HEK293T lysate. Load: 10 µg per lane. Primary antibody: BCL3 antibody at 1:1000 for overnight at 4°C. Secondary antibody: goat anti-rabbit secondary Antibody 488 antibody at 1:20,000 for one hour at RT. Block: BlockOut blocking buffer one hour at RT. Predicted/Observed size: 48 kda. Other band(s): BCL3 processing caused by ubiquitination, phosphorylations.



Western Blotting

Image 2. Western Blot of Rabbit anti-BCL3 antibody. Western Blot of Rabbit anti-BCL3 antibody. Lane 1: MW ladder . Lane 2: U-87 MG WCL. Lane 3: C2C12 WCL . Lane 4: NIH/3T3 WCL . Load: 10 ug per lane. Primary antibody: BCL3 antibody at 1:1000 for overnight at 4°C. Secondary antibody: goat anti-rabbit secondary HRP antibody at 1:70,000 for one hour at RT. Block: 1% Casein (PVDF) blocking buffer one hour at RT. Predicted/Observed size: 47 kda. Other band(s): BCL3 processing caused by ubiquitination, phosphorylations.



Immunofluorescence

Image 3. Immunofluorescence microscopy of BCL3. Immunofluorescence microscopy of Anti-BCL3 in Caco-2 cells using FITC-conjugated Fluorescent anti-rabbit IgG for detection. Caco-2 cells were fixed with 4% PFA, blocked (5% mouse serum/0.3% Triton X-100 in 1X PBS) for 1hr, then incubated with 15µg/mL of anti-BCL3 primary antibody (Cat. No. 600-401-GU4) at 4°C overnight. Following 3 washes in 1X PBS for 5min each, 5µg/mL of FITC-conjugated Fluorescent anti-rabbit IgG was added and allowed to incubate for 1hr at room temperature. Nuclei were counterstained with DAPI present in mounting medium. The predicted main localization is nucleoplasm. Additional localization in some cell types includes vesicles and midbody. (a) BCL3 (b) DAPI (c) merged DAPI/BCL3 (d) secondary antibody only. Image taken at 40X magnification.

Please check the [product details page](#) for more images. Overall 4 images are available for ABIN6655290.