

Datasheet for ABIN6655321
anti-CD45 antibody (FITC)



[Go to Product page](#)

1 Image

1 Publication

Overview

Quantity:	500 µL
Target:	CD45 (PTPRC)
Reactivity:	Human
Host:	Mouse
Clonality:	Monoclonal
Conjugate:	This CD45 antibody is conjugated to FITC
Application:	Flow Cytometry (FACS), Immunohistochemistry (IHC), Western Blotting (WB), Immunoprecipitation (IP)

Product Details

Purpose:	CD45 Fluorescein Antibody
Immunogen:	Anti-CD45 Antibody (Monoclonal) was produced by repeated immunizations with CD45 antigen.
Clone:	HI30
Isotype:	IgG1 kappa
Cross-Reactivity (Details):	Reactivity is observed against human CD45.
Purification:	Fluorescein conjugated CD45 Monoclonal Antibody was purified from tissue culture supernatant via affinity chromatography and is directed against human CD45.
Sterility:	Sterile filtered
Labeling Ratio:	2-8

Target Details

Target:	CD45 (PTPRC)
Alternative Name:	CD45 (PTPRC Products)
Background:	<p>Synonyms: Receptor-type tyrosine-protein phosphatase C, Leukocyte common antigen, CD45, PTPRC</p> <p>Background: The HI30 antibody reacts with human CD45, one of the most abundant hematopoietic markers and one that is expressed on all leukocytes (the Leukocyte Common Antigen, LCA). CD45 is a protein tyrosine phosphatase existing in several isoforms, each being generated and expressed in cell-specific patterns. With its broad cell distribution, CD45 is critical for many leukocyte functions, regulating signal transduction and cell activation associated with the T cell receptor, B cell receptor, and IL-2 receptor. Other forms of CD45, with restricted cellular expression, include CD45R (B220), CD45RA, CD45RB, CD45RO and others. The HI30 antibody is widely used as a marker for human CD45 expression on T cells, B cells, monocytes, macrophages, and NK cells.</p> <p>Gene Name: CD45</p>
Gene ID:	5788
NCBI Accession:	NP_002829
UniProt:	P08575
Pathways:	TCR Signaling , Regulation of Leukocyte Mediated Immunity , Positive Regulation of Immune Effector Process , Production of Molecular Mediator of Immune Response , CXCR4-mediated Signaling Events , BCR Signaling

Application Details

Application Notes:	Immunoprecipitation_Dilution: User Optimized Immunohistochemistry_Dilution: User Optimized Flow_Cytometry_Dilution: 5 uL/test/1x10e5 to 1x10e8 cells Western_Blot_Dilution: User Optimized
Comment:	Anti-CD45 is tested for Flow Cytometry and is useful for Immunoprecipitation, Immunohistochemistry, and Western Blot. Researchers should determine optimal titers for applications that are not stated.
Restrictions:	For Research Use only

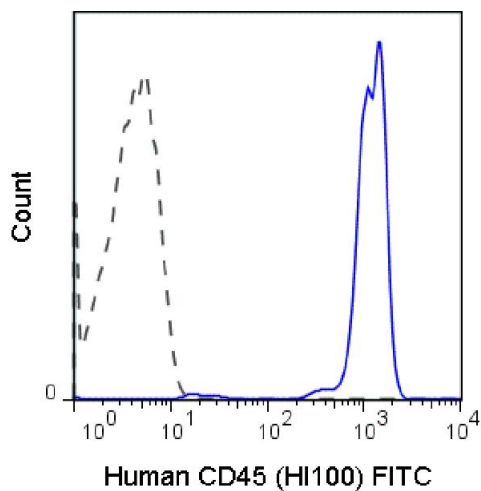
Handling

Format:	Liquid
Buffer:	Buffer: 0.01 M Sodium Phosphate, 0.15 M Sodium Chloride, pH 7.2 Stabilizer: 0.1 % Gelatin Preservative: 0.09 % (w/v) Sodium Azide
Preservative:	Sodium azide
Precaution of Use:	This product contains Sodium azide: a POISONOUS AND HAZARDOUS SUBSTANCE which should be handled by trained staff only.
Storage:	4 °C
Storage Comment:	Store vial at 4° C prior to opening. This product is stable for several weeks at 4° C as an undiluted liquid. Dilute only prior to immediate use. DO NOT FREEZE. This product is light sensitive.
Expiry Date:	6 months

Publications

Product cited in: Guo, Wang, Dong, Lv, Zhao, Jin, Guo, Wang, Cai, Sun, Zhou, Zhang, Chen, Yang, Ji, Xin, Li, Li, Fan: "Effects of Ginkgo biloba on Early Decompression after Spinal Cord Injury." in: **Evidence-based complementary and alternative medicine : eCAM**, Vol. 2020, pp. 6958246, (2020) ([PubMed](#)).

Images



Flow Cytometry

Image 1. Flow Cytometry of Mouse anti-CD45 FITC - 200-302-N68 Flow Cytometry of Mouse anti-CD45 Fluorescein Conjugated Monoclonal Antibody. Cells: human peripheral blood lymphocytes. Stimulation: none. Antibody: (Dotted line) FITC Mouse IgG1 isotype control; (Blue line) Fluorescein Anti-CD45 mouse antibody using 5 ul (0.25ug).