

Datasheet for ABIN6655376
anti-TBPL1 antibody



[Go to Product page](#)

3 Images

Overview

Quantity:	100 µg
Target:	TBPL1
Reactivity:	Human
Host:	Mouse
Clonality:	Monoclonal
Conjugate:	This TBPL1 antibody is un-conjugated
Application:	Western Blotting (WB), ELISA, Immunohistochemistry (IHC), Immunoprecipitation (IP), Flow Cytometry (FACS), Chromatin Immunoprecipitation (ChIP), Fluorescence Microscopy (FM)

Product Details

Immunogen:	Immunogen: TRF2 Antibody was produced in mice by repeated immunizations with a full-length TRF2 human protein. Immunogen Type: Recombinant Protein
Clone:	4A794-15
Isotype:	IgG1
Purification:	Anti-TRF2 Antibody was purified by Protein G chromatography. A BLAST analysis was used to suggest cross-reactivity with Anti-TRF2 from Human, Mouse, Muntjac (deer), and rat based on 100% homology with the immunizing sequence. Cross-reactivity with Anti-TRF2 from other sources has not been determined.

Target Details

Target:	TBPL1
Alternative Name:	TRF2 (TBPL1 Products)
Background:	<p>Synonyms: TRBF2, TRF2, Telomeric repeat-binding factor 2, TTAGGG repeat-binding factor 2, Telomeric DNA-binding protein</p> <p>Background: TRF2 antibody detects human, mouse, deer and rat TRF2. TRF2 is an ubiquitously expressed protein that is implicated in the control of telomere length. TRF2, like TRF1, contains a Myb-related DNA binding motif. It binds to duplex TTAGGG repeats and is localized to all human telomeres in metaphase chromosomes. TRF2 is thought to protect chromosome ends by maintaining the correct structure at telomere termini. The use of mutant forms of TRF2 has implicated a role for TRF2 in the prevention of senescence in primary human cells. Recently, it has been shown that inhibition of TRF2 resulted in apoptosis in a subset of mammalian cell types. Anti TRF2 antibody is ideal for investigators involved in apoptosis and chromatin research.</p> <p>Gene Name: TERF2</p>
Gene ID:	7014
NCBI Accession:	NP_005643
UniProt:	Q15554

Application Details

Application Notes:	<p>Immunohistochemistry Dilution: 5 µg/mL</p> <p>Application Note: Anti-TRF2 Antibody is suitable for use in ChIP, ELISA, Flow (Intracellular) Cytometry, IF/ICC, IHC (frozen), IP, and WB. Expect a band approximately 55.6 kDa on specific lysates. Specific conditions for reactivity should be optimized by the end user.</p> <p>ChIP Dilution: User Optimized</p> <p>Immunoprecipitation Dilution: 2 µg/10⁶ cells</p> <p>ELISA Dilution: 2 µg/mL</p> <p>Flow Cytometry Dilution: User Optimized</p> <p>Western Blot Dilution: 2-4 µg/mL</p> <p>IF Microscopy Dilution: User Optimized</p>
Restrictions:	For Research Use only

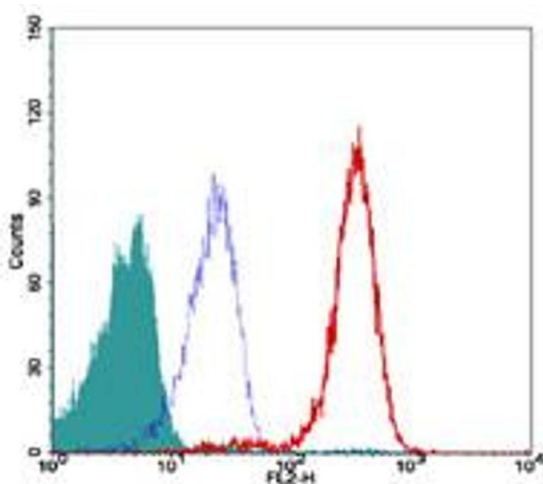
Handling

Format:	Liquid
---------	--------

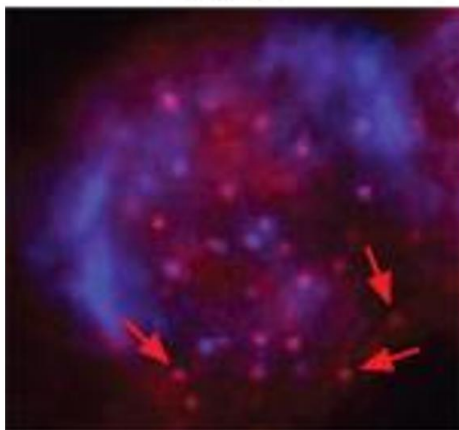
Handling

Buffer:	Buffer: 0.02 M Potassium Phosphate, 0.15 M Sodium Chloride, pH 7.2 Stabilizer: 0.05 % BSA 0.05 % (w/v) Sodium Azide
Preservative:	Sodium azide
Precaution of Use:	This product contains Sodium azide: a POISONOUS AND HAZARDOUS SUBSTANCE which should be handled by trained staff only.
Storage:	RT, 4 °C, -20 °C
Storage Comment:	Store vial at -20° C prior to opening. Aliquot contents and freeze at -20° C or below for extended storage. Avoid cycles of freezing and thawing. Centrifuge product if not completely clear after standing at room temperature. This product is stable for several weeks at 4° C as an undiluted liquid. Dilute only prior to immediate use.

Images



TRF2

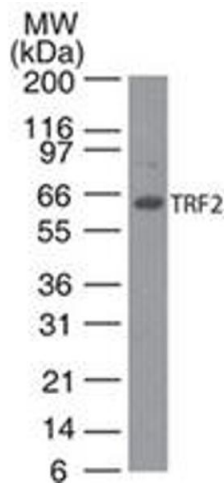


Flow Cytometry

Image 1. TRF2 Flow Cytometry Flow Cytometry of Mouse Anti-TRF2 antibody. Cells: human Jurkat. Stimulation: none. Primary Antibody: Anti-TRF2 antibody at 0.1 ug (red) and isotype control (blue). Secondary Antibody: anti-mouse IgG PE conjugated.

Immunohistochemistry

Image 2. TRF2 Immunofluorescence. Immunofluorescence Microscopy of Mouse Anti-TRF2 antibody. Tissue: human HeLa cells. Fixation: 3.8% PFA. Antigen retrieval: not required. Primary antibody: BAG-3 antibody at 1:2000 for 1 h at RT. Secondary antibody: Fluorescein rabbit secondary antibody at 1:10,000 for 45 min at RT. Localization: TRF2-bound telomeres. Staining: BAG-3 as red fluorescent signal.



Western Blotting

Image 3. TRF2 Western Blot. Western Blot of Mouse Anti-TRF2 antibody. Lane A: human Jurkat cell lysate. Primary antibody: TRF2 at 2 $\mu\text{g}/\text{mL}$ overnight at 4°C. Secondary antibody: Goat anti-mouse Ig HRP conjugate antibody at 1:10,000 for 45 min at RT. Block: 5% BLOTTO overnight at 4°C. Predicted/Observed size: 80 kDa for TRF2. Other band(s): none.