

Datasheet for ABIN6655434

**anti-PLK1 antibody****2** Images[Go to Product page](#)

## Overview

Quantity:	100 µg
Target:	PLK1
Reactivity:	Human
Host:	Chicken
Clonality:	Polyclonal
Conjugate:	This PLK1 antibody is un-conjugated
Application:	Western Blotting (WB), ELISA, Immunohistochemistry (IHC), Immunofluorescence (IF), Fluorescence Microscopy (FM)

## Product Details

Purpose:	PLK1 Antibody
Immunogen:	Anti-PLK1 antibody was prepared from eggs of chickens laid after repeated immunizations with a synthetic peptide corresponding to an internal portion of human PLK1 conjugated to Keyhole Limpet Hemocyanin (KLH).
Isotype:	IgG
Cross-Reactivity (Details):	Reactivity occurs against human PLK1.
Purification:	This product is an IgY fraction antibody purified from monospecific chicken egg yolks by a multi-step process which includes selective precipitation and salt fractionation followed by extensive dialysis against the buffer stated above.
Sterility:	Sterile filtered

## Target Details

---

Target:	PLK1
Alternative Name:	PLK1 ( <a href="#">PLK1 Products</a> )
Background:	<p>Synonyms: Chicken Anti-Polo Like Kinase 1 Antibody, Chicken Anti-PLK1 Antibody, Chicken PLK-1 Antibody, Serine/Threonine-Protein Kinase 13, Polo-Like Kinase 1, STPK13, PLK-1, PLK, Serine/Threonine-Protein Kinase PLK1, Cell Cycle Regulated Protein Kinase, Polo-Like Kinase (Drosophila), Polo (Drosophila)-Like Kinase, EC 2.7.11.21</p> <p>Background: Polo-like kinases (PLKs) are a family of four serine/threonine protein kinases that belongs to the CDC5/Polo subfamily and are critical regulators of cell cycle progression, mitosis, cytokinesis, elevated levels are found in many different types of cancer, and the DNA damage response. Depletion of this protein in cancer cells dramatically inhibited cell proliferation and induced apoptosis, hence, it is a target for cancer therapy. PLK-1, -2 and -3 are ubiquitously expressed, whereas PLK-4 is restricted to a few tissues. Diseases associated with PLK1 include Breast Cancer, Transient Tic Disorder, and Monoclonal Paraproteinemia. Anti-PLK1 Antibody is useful for researchers interested in Cancer Researcher, Cell Cycle Research, and Kinase Activity Research.</p> <p>Gene Name: PLK1</p>
Gene ID:	5347
NCBI Accession:	<a href="#">NP_005021</a>
UniProt:	<a href="#">P53350</a>
Pathways:	<a href="#">Cell Division Cycle, M Phase</a>

## Application Details

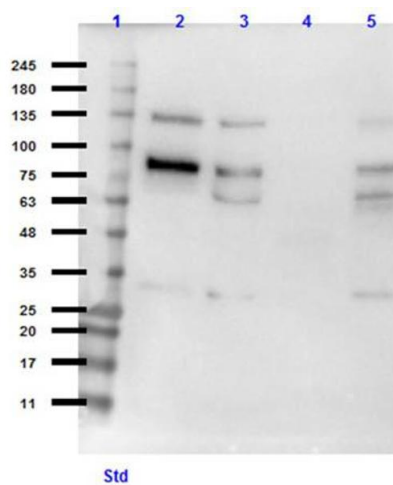
---

Application Notes:	<p>ELISA_Dilution: 1:10,000 - 1:50,000</p> <p>Immunohistochemistry_Dilution: 15 µg/mL</p> <p>IF_Microscopy_Dilution: 5 µg/mL</p> <p>Western_Blot_Dilution: 1:500</p>
Comment:	<p>Anti-PLK1 antibody has been tested in Western Blot and Immunofluorescence. Expect a band ~68.3kDa in appropriate cell lysates or tissues. Positive controls used are HEK293T or K-562 whole cell lysate in WB, and HeLa cells in IF. Specific conditions for reactivity should be optimized by the end user.</p>
Restrictions:	For Research Use only

## Handling

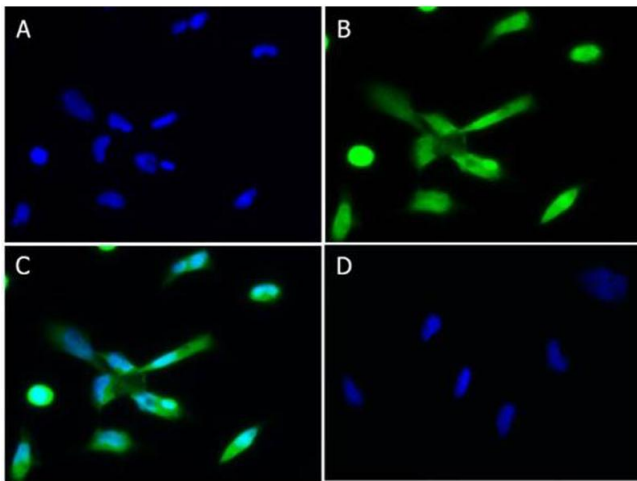
Format:	Liquid
Buffer:	Buffer: 0.002 M Sodium Phosphate, 0.15 M Sodium Chloride, pH 7.0 Stabilizer: None Preservative: 0.01 % (w/v) Sodium Azide
Preservative:	Sodium azide
Precaution of Use:	This product contains Sodium azide: a POISONOUS AND HAZARDOUS SUBSTANCE which should be handled by trained staff only.
Storage:	4 °C, -20 °C
Storage Comment:	Store vial at -20° C prior to opening. Aliquot contents and freeze at -20° C or below for extended storage. Avoid cycles of freezing and thawing. Centrifuge product if not completely clear after standing at room temperature. This product is stable for several weeks at 4° C as an undiluted liquid. Dilute only prior to immediate use.
Expiry Date:	12 months

## Images



### Western Blotting

**Image 1.** Western Blot of Chicken Anti-PLK1 Antibody  
Western Blot of Chicken Anti-PLK1 Antibody. Lane 1: PreStained Opal Molecular Weight . Lane 2: PLK1 Overexpressing Lysate (10µg). Lane 3: HEK293T Lysate . Lane 4: Human Testis Lysate. Lane 5: K-562 Lysate . Load 35µg per lysate. Blocking Buffer: 5% Blotto in TBST. Primary Antibody: Anti-PLK1 at 1:500 overnight at 2-8°C. Secondary Antibody: Goat Anti-Chicken HRP Antibody at 1:40000 for 60min at RT. Expect: ~68kDa.



### Immunofluorescence

**Image 2.** Immunofluorescence of Chicken Anti-PLK1 Antibody. Cell Line: HeLa. Fixative: 4% PFA. Permeabilization: 0.3% Triton X-100. Antibody: Chicken Anti-PLK1 at 5µg/mL overnight at 2-8°C. Counterstain Antibody: Donkey Anti-Chicken IgG 488 at 5µg/mL for 1hr at RT. Nuclear counterstain: DAPI. Localization: Intercellular. Image: (A) DAPI Only, (B) PLK1+Secondary, (C) Merge A+B, (D) Secondary only.