

Datasheet for ABIN6655568
anti-PAPOLA antibody (C-Term)



[Go to Product page](#)

2 Images

Overview

Quantity:	100 µL
Target:	PAPOLA
Binding Specificity:	C-Term
Reactivity:	Human
Host:	Rabbit
Clonality:	Polyclonal
Conjugate:	This PAPOLA antibody is un-conjugated
Application:	Western Blotting (WB), ELISA

Product Details

Immunogen:	Immunogen: Anti-PAPOLA Antibody was produced in rabbits by repeated immunizations with a synthetic peptide of human PAPOLA containing an amino acid sequence from the C-terminus of the protein. Immunogen Type: Peptide
Cross-Reactivity (Details):	Cross reactivity with PAPOLA from other species not tested.
Purification:	Anti-PAPOLA Antibody is monospecific antiserum processed by delipidation and defibrination followed by sterile filtration.

Target Details

Target:	PAPOLA
Alternative Name:	PAPOLA (PAPOLA Products)

Target Details

Background: Synonyms: Poly(A) polymerase alpha, PAP-alpha, Polynucleotide adenylyltransferase alpha, PAP

Background: PAPOLA is an RNA polymerase that generates the poly(A) tail of RNA's by adding AMP monomers to the 3'-end. PAPOLA may also be required for the endoribonucleolytic cleavage reaction at some polyadenylation sites. Anti-PAPOLA Antibody is ideal for research in Gene Expression, Transcription and Translation.

Gene Name: PAPOLA

Gene ID: 10914

NCBI Accession: [NP_001238935](#)

UniProt: [P51003](#)

Application Details

Application Notes: Application Note: Anti-PAPOLA Antibody is suitable for ELISA and Western Blots. Specific conditions for reactivity should be optimized by the end user. Expect a band approximately 83 kDa in the appropriate cell lysate or extract.

ELISA Dilution: 1:100 - 1:500

Western Blot Dilution: 1:1,000

Restrictions: For Research Use only

Handling

Format: Liquid

Buffer: 0.01 % (w/v) Sodium Azide

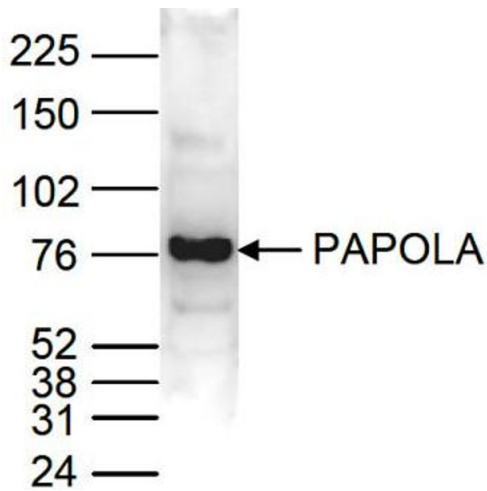
Stabilizer: None

Preservative: Sodium azide

Precaution of Use: This product contains Sodium azide: a POISONOUS AND HAZARDOUS SUBSTANCE which should be handled by trained staff only.

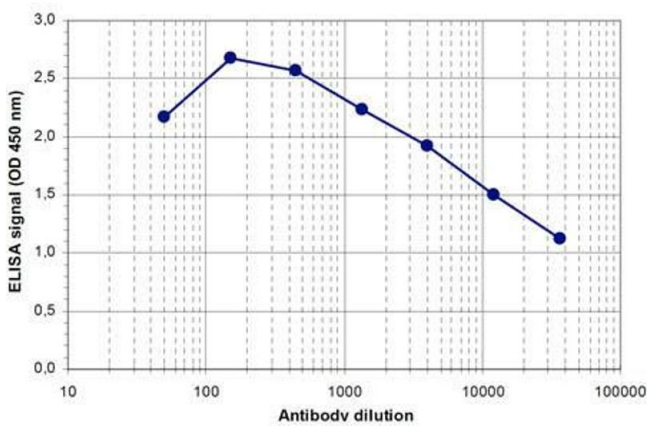
Storage: RT, 4 °C, -20 °C

Storage Comment: Store vial at -20° C prior to opening. Aliquot contents and freeze at -20° C or below for extended storage. Avoid cycles of freezing and thawing. Centrifuge product if not completely clear after standing at room temperature. This product is stable for several weeks at 4° C as an undiluted liquid. Dilute only prior to immediate use.



Western Blotting

Image 1. Western Blot of anti-PAPOLA antibody Western Blot results of Rabbit anti-PAPOLA antibody. Lane 1: HeLa nuclear extract cells. Load: 40 µg per lane. Primary antibody: PAPOLA antibody at 1:1,000 for overnight at 4°C. Secondary antibody: goat anti-rabbit HRP secondary antibody at 1:10,000 for 45 min at RT. Block: 5% Blotto/TBS-Tween overnight at 4°C. Predicted: 83kDa.



ELISA

Image 2. ELISA of anti-PAPOLA antibody ELISA results of Rabbit anti-PAPOLA antibody. Antigen: BSA conjugated PAPOLA. Coating amount: 0.1 µg per well. Dilution series: serial dilution. Estimated Antibody Titer to be 1:22,500. Substrate: TMB .