

Datasheet for ABIN6655581
anti-THRB antibody (N-Term)



[Go to Product page](#)

1 Image **2** Publications

Overview

Quantity:	100 µL
Target:	THRB
Binding Specificity:	N-Term
Reactivity:	Human
Host:	Mouse
Clonality:	Monoclonal
Conjugate:	This THRB antibody is un-conjugated
Application:	Western Blotting (WB)

Product Details

Purpose:	Thyroid Hormone Receptor beta Antibody
Immunogen:	Anti-Thyroid Hormone Receptor beta monoclonal antibody was produced in mouse by repeated immunizations with synthetic peptide corresponding to amino acid residues from the N-terminal region of Thyroid Hormone Receptor beta.
Clone:	2386
Isotype:	IgG1
Cross-Reactivity (Details):	Thyroid Hormone Receptor beta antibody is purified by Protein G chromatography from cell culture supernatant.
Purification:	Anti-Thyroid Hormone Receptor beta antibody is directed against human TRβ.

Target Details

Target:	THRB
Alternative Name:	Thyroid Hormone Receptor beta (THRB Products)
Background:	<p>Synonyms: mouse anti-Thyroid Hormone Receptor beta Antibody, mouse anti-Thrb antibody, Nuclear receptor subfamily 1 group A member 2, c-erbA-2, c-erbA-beta</p> <p>Background: Thyroid Hormone Receptor beta antibody detects Thyroid Hormone Receptor beta. Thyroid hormones are essential for development of the central nervous system and deficits in these hormones during development affects such cognitive functions as learning and memory. Thyroid hormones exert their physiological role mainly through binding to specific nuclear receptors including the predominant isoforms of thyroid hormone receptors TRα1, TRα2, TRβ1 and TRβ2. TRα1, TRβ1 and TRβ2 bind T3 with high affinity and also bind to thyroid hormone response elements (TREs) on chromatin to regulate the transcriptional processes in several target tissues, including adult rat brain. Thyroid Hormone Receptor beta antibody is ideal for investigators involved in Cell Signaling, Neuroscience, Signal Transduction research.</p> <p>Gene Name: THRB</p>
Gene ID:	7068
NCBI Accession:	NP_000452
UniProt:	P10828
Pathways:	Nuclear Receptor Transcription Pathway , Steroid Hormone Mediated Signaling Pathway , Sensory Perception of Sound

Application Details

Application Notes:	Optional[Nutralization_Dilution]: 1:1000
Comment:	<p>Suggested Applications: IHC</p> <p>Anti-Thyroid Hormone Receptor beta (Mouse) antibody is tested for use in Western Blotting. Expect a band of approximately 55 kDa corresponding to TR-β proteins in the appropriate cell lysate or extract. Researchers should determine optimal titers for applications that are not stated below.</p>
Restrictions:	For Research Use only

Handling

Format:	Liquid
Buffer:	Buffer: 0.01 M HEPES, 0.15 M Sodium Chloride, pH 7.5

Handling

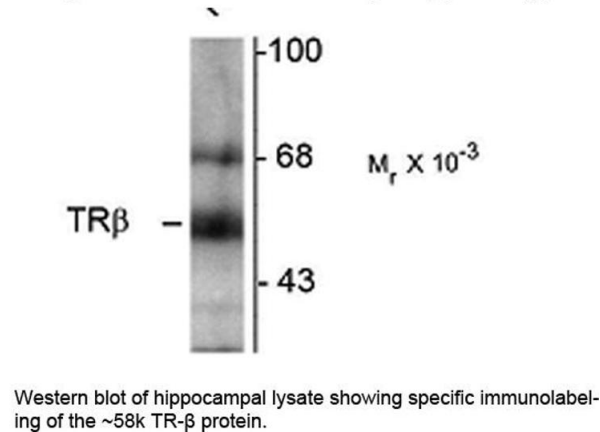
	Stabilizer: 0.1 mg/mL Bovine Serum Albumin (BSA) - IgG and Protease free, 50 % (v/v) Glycerol
Storage:	4 °C,-20 °C
Storage Comment:	Store vial at -20° C prior to opening. This product is stable at 4° C as an undiluted liquid. For extended storage, aliquot contents and freeze at -20° C or below. Avoid cycles of freezing and thawing. Dilute only prior to immediate use.
Expiry Date:	12 months

Publications

Product cited in:	Aksoy, Pencik, Hartenbach, Moazzami, Schlederer, Balber, Varady, Philippe, Baltzer, Mazumder, Whitchurch, Roberts, Haitel, Herac, Susani, Mitterhauser, Marculescu, Stangl-Kremser, Hassler, Kramer, Shariat, Turner, Tichy, Oppelt, Pospisilova, Hartenbach, T: "Thyroid and androgen receptor signaling are antagonized by μ -Crystallin in prostate cancer." in: International journal of cancer , Vol. 148, Issue 3, pp. 731-747, (2021) (PubMed).
	Schnoell, Kotowski, Jank, Stoiber, Gurnhofer, Schlederer, Heiduschka, Kenner, Kadletz-Wanke: "Prognostic Relevance of Thyroid-Hormone-Associated Proteins in Adenoid Cystic Carcinoma of the Head and Neck." in: Journal of personalized medicine , Vol. 11, Issue 12, (2021) (PubMed).

Images

Anti-Thyroid Hormone Receptor, β -Isotype



Western Blotting

Image 1. Western blot of Anti-Thyroid Hormone Receptor beta (Mouse) Antibody - 209-301-A96 Western Blot of Mouse anti-Thyroid Hormone Receptor beta antibody. Lane 1: hippocampal lysate. Lane 2: none. Load: 10 μ g per lane. Primary antibody: Thyroid Hormone Receptor beta antibody at 1:1,000 for overnight at 4°C. Secondary antibody: mouse secondary antibody at 1:10,000 for 45 min at RT. Block: 5% BLOTTO overnight at 4°C. Predicted/Observed size: 58 kDa for Thyroid Hormone Receptor beta. Other band(s): Thyroid Hormone Receptor beta splice variants and isoforms.