

Datasheet for ABIN6655607
anti-PAPD1 antibody (C-Term)[Go to Product page](#)

2 Images

Overview

Quantity:	100 µL
Target:	PAPD1 (MTPAP)
Binding Specificity:	C-Term
Reactivity:	Human
Host:	Rabbit
Clonality:	Polyclonal
Conjugate:	This PAPD1 antibody is un-conjugated
Application:	Western Blotting (WB), ELISA

Product Details

Immunogen:	Immunogen: Anti-PAPD1 Antibody was produced in rabbits by repeated immunizations with a synthetic peptide of human PAPD1 containing an amino acid sequence from the C-terminus of the protein. Immunogen Type: Peptide
Cross-Reactivity (Details):	Cross reactivity with PAPD1 from other species not tested.
Purification:	Anti-PAPD1 Antibody is monospecific antiserum processed by delipidation and defibrination followed by sterile filtration.

Target Details

Target:	PAPD1 (MTPAP)
Alternative Name:	PAPD1 (MTPAP Products)

Target Details

Background:	<p>Synonyms: Poly(A) RNA polymerase mitochondrial, PAP, PAP-associated domain-containing protein 1, Polynucleotide adenylyltransferase, Terminal uridylyltransferase 1, TUTase1, mtPAP</p> <p>Background: PAPD1 is a mitochondrial RNA polymerase that generates the poly(A) tail of mitochondrial RNA's by adding AMP monomers to the 3'-end. PAPD1 might also be responsible for the introduction of UAA stop codons, which are not encoded by the mitochondrial DNA, in some RNA molecules. Anti-PAPD1 Antibody is ideal for research in Gene Expression, Transcription and Translation.</p> <p>Gene Name: MTPAP</p>
-------------	---

Gene ID:	55149
----------	-------

NCBI Accession:	NP_060579
-----------------	---------------------------

UniProt:	Q9NVV4
----------	------------------------

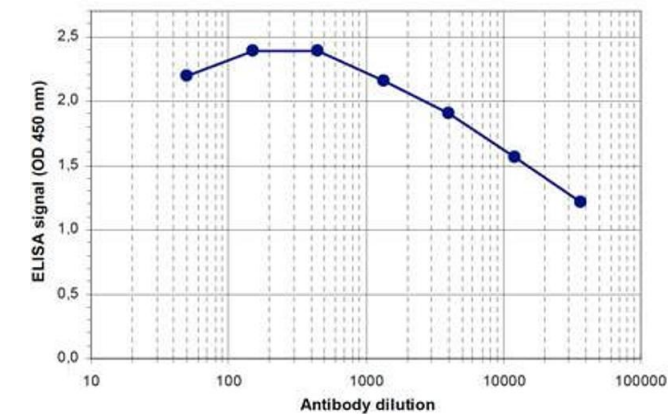
Application Details

Application Notes:	<p>Application Note: Anti-PAPD1 Antibody is suitable for ELISA and Western Blots. Specific conditions for reactivity should be optimized by the end user. Expect a band approximately 66 kDa in the appropriate cell lysate or extract.</p> <p>ELISA Dilution: 1:500</p> <p>Western Blot Dilution: 1:1,000</p>
--------------------	--

Restrictions:	For Research Use only
---------------	-----------------------

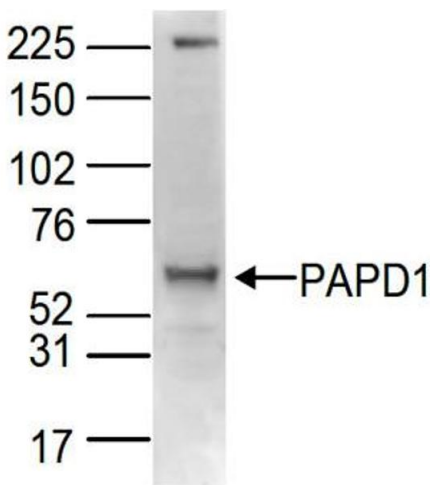
Handling

Format:	Liquid
Buffer:	<p>0.01 % (w/v) Sodium Azide</p> <p>Stabilizer: None</p>
Preservative:	Sodium azide
Precaution of Use:	This product contains Sodium azide: a POISONOUS AND HAZARDOUS SUBSTANCE which should be handled by trained staff only.
Storage:	RT, 4 °C, -20 °C
Storage Comment:	Store vial at -20° C prior to opening. Aliquot contents and freeze at -20° C or below for extended storage. Avoid cycles of freezing and thawing. Centrifuge product if not completely clear after standing at room temperature. This product is stable for several weeks at 4° C as an undiluted liquid. Dilute only prior to immediate use.



ELISA

Image 1. ELISA of anti-PAPD1 antibody ELISA results of Rabbit anti-PAPD1 antibody. Antigen: BSA conjugated PAPD1. Coating amount: 0.1 µg per well. Dilution series: serial dilution. Estimated Antibody Titer to be 1:47,000. Substrate: TMB .



Western Blotting

Image 2. Western Blot of anti-PAPD1 antibody Western Blot results of Rabbit anti-PAPD1 antibody. Lane 1: U2OS lysates. Load: 80 µg per lane. Primary antibody: PAPD1 antibody at 1:1,000 for overnight at 4°C. Secondary antibody: goat anti-rabbit HRP secondary antibody at 1:10,000 for 45 min at RT. Block: 5% Blotto/TBS-Tween overnight at 4°C. Predicted: 66kDa.