

Datasheet for ABIN6655643
anti-IGKV1-27 antibody (C-Term)[Go to Product page](#)

1 Image

Overview

Quantity:	100 µg
Target:	IGKV1-27
Binding Specificity:	C-Term
Reactivity:	Human
Host:	Mouse
Clonality:	Monoclonal
Conjugate:	This IGKV1-27 antibody is un-conjugated
Application:	Western Blotting (WB), Immunoprecipitation (IP)

Product Details

Immunogen:	Immunogen: A20 Antibody was produced in mice by repeated immunizations with recombinant human A20 protein at the c-terminus. Immunogen Type: Recombinant Protein
Clone:	59A426
Isotype:	IgG1
Purification:	Anti-A20 Antibody was purified by Protein G chromatography. A BLAST analysis was used to suggest cross-reactivity with Anti-A20 from Human, Mouse and rat based on 100% homology with the immunizing sequence. Cross-reactivity with Anti-A20 from other sources has not been determined.

Target Details

Target:	IGKV1-27
Alternative Name:	A20 (IGKV1-27 Products)
Background:	<p>Synonyms: OTUD7C, Tumor necrosis factor alpha-induced protein 3, TNF alpha-induced protein 3, OTU domain-containing protein 7C, A20p50, A20p37</p> <p>Background: Anti-A20 antibody detects human A20. A20 (TNFAIP3) is an important regulator of proinflammatory signaling pathways, including NF-kB signaling. A20 is upregulated through NF-kB (p50/p55) activation, and subsequently down regulates NF-kB through its dual function as a deubiquitinase and ubiquitin ligase. The A20 monoclonal antibody has been instrumental in discovering various nuances of NF-kB regulation and key to defining A20 biology. Anti-A20 antibody is ideal for investigators involved in NFkappaB and Signaling research.</p> <p>Gene Name: TNFAIP3</p>
Gene ID:	7128
NCBI Accession:	NP_001257436
UniProt:	P21580
Pathways:	Activation of Innate immune Response

Application Details

Application Notes:	<p>Application Note: Anti-A20 antibody is suitable for use in Flow (I), IF/ICC, IHC (p), IP and WB. Expect a band approximately 90 kDa on specific lysates. Specific conditions for reactivity should be optimized by the end user.</p> <p>Immunoprecipitation Dilution: 1-2 µg/mL</p> <p>Western Blot Dilution: 2-4 µg/mL</p>
Restrictions:	For Research Use only

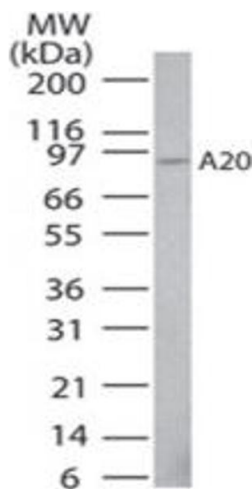
Handling

Format:	Liquid
Buffer:	<p>Buffer: 0.02 M Potassium Phosphate, 0.15 M Sodium Chloride, pH 7.2</p> <p>Stabilizer: 0.05 % BSA</p> <p>0.05 % (w/v) Sodium Azide</p>
Preservative:	Sodium azide
Precaution of Use:	This product contains Sodium azide: a POISONOUS AND HAZARDOUS SUBSTANCE which

Handling

	should be handled by trained staff only.
Storage:	RT,4 °C,-20 °C
Storage Comment:	Store vial at -20° C prior to opening. Aliquot contents and freeze at -20° C or below for extended storage. Avoid cycles of freezing and thawing. Centrifuge product if not completely clear after standing at room temperature. This product is stable for several weeks at 4° C as an undiluted liquid. Dilute only prior to immediate use.

Images



Western Blotting

Image 1. A20 Western Blot. Western Blot of Mouse Anti-A20 antibody. Lane A: human Jurkat lysate. Load: 30 µg per lane. Primary antibody: A20 antibody at 4µg/mL for overnight at 4°C. Secondary antibody: mouse secondary antibody at 1:10,000 for 45 min at RT. Block: 5% BLOTTO overnight at 4°C. Predicted/Observed size: 89.6 kDa for A20. Other band(s): none.