

Datasheet for ABIN6655670  
**anti-MAPK14 antibody**



[Go to Product page](#)

2 Images

## Overview

Quantity:	100 µg
Target:	MAPK14
Reactivity:	Human
Host:	Goat
Clonality:	Polyclonal
Conjugate:	This MAPK14 antibody is un-conjugated
Application:	Western Blotting (WB), ELISA, Immunohistochemistry (IHC), Fluorescence Microscopy (FM)

## Product Details

Purpose:	P38 Antibody
Immunogen:	Anti-p38 antibody was prepared from whole goat serum produced by repeated immunizations with a synthetic peptide corresponding to an internal portion of human p38 conjugated to Keyhole Limpet Hemocyanin (KLH).
Isotype:	IgG
Cross-Reactivity (Details):	This affinity purified antibody is directed against human p38.
Purification:	This product was affinity purified from monospecific antiserum by immunoaffinity purification.
Sterility:	Sterile filtered

## Target Details

Target:	MAPK14
---------	--------

## Target Details

---

Alternative Name:	P38 ( <a href="#">MAPK14 Products</a> )
Background:	<p>Synonyms: Goat Anti-p38 Antibody, Goat Anti-MAPK14 Antibody, CSBP, CSBP1, CSBP2, CSPB1, MXI2, SAPK2A, MAPK14</p> <p>Background: p38, also called SAPK2A, belongs to the MAP kinase family. The MAP kinases are critical signaling proteins for many biochemical signals. They participate in transcription regulation, cellular differentiation and proliferation. Environmental signals and cytokines catalyze the kinases into bonding their substrates such as MAX and ATF2, for example, and p53 a tumor suppressing gene. p38 may be associated with diseases such as chlamydia and patellar tendinitis. Anti-p38 antibody is useful for researchers interested in signal pathways, cellular development or cancer research.</p> <p>Gene Name: MAPK14</p>
Gene ID:	1432
NCBI Accession:	<a href="#">NP_001306</a>
UniProt:	<a href="#">Q16539</a>
Pathways:	<a href="#">MAPK Signaling</a> , <a href="#">Neurotrophin Signaling Pathway</a> , <a href="#">Activation of Innate immune Response</a> , <a href="#">Cellular Response to Molecule of Bacterial Origin</a> , <a href="#">Regulation of Muscle Cell Differentiation</a> , <a href="#">Regulation of Cell Size</a> , <a href="#">Hepatitis C</a> , <a href="#">Toll-Like Receptors Cascades</a> , <a href="#">Autophagy</a> , <a href="#">Thromboxane A2 Receptor Signaling</a> , <a href="#">BCR Signaling</a> , <a href="#">S100 Proteins</a>

## Application Details

---

Application Notes:	<p>ELISA_Dilution: 5 µg/mL</p> <p>Immunohistochemistry_Dilution: User Optimized</p> <p>IF_Microscopy_Dilution: 15 µg/mL</p> <p>Western_Blot_Dilution: 1:1000</p>
Comment:	Anti-p38 Antibody has been tested in Western Blot, ELISA and Immunohistochemistry. Expect a band at ~42 kDa in western blot using appropriate lysates. Positive control whole cell lysates used NIH3T3 and PC-12 @ 1µg/mL for WB, breast cancer tissue for IHC. This antibody has been additionally validated using a p38 knock-out lysate.
Restrictions:	For Research Use only

## Handling

---

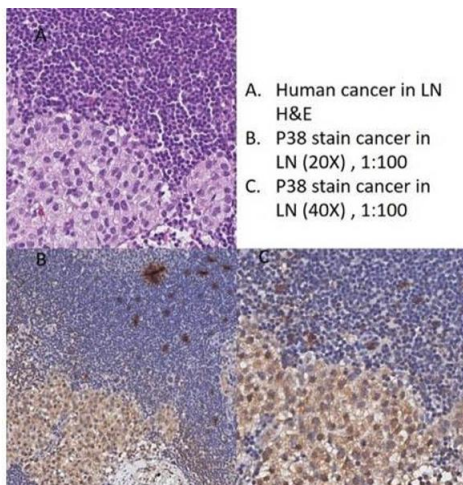
Format:	Liquid
---------	--------

---

## Handling

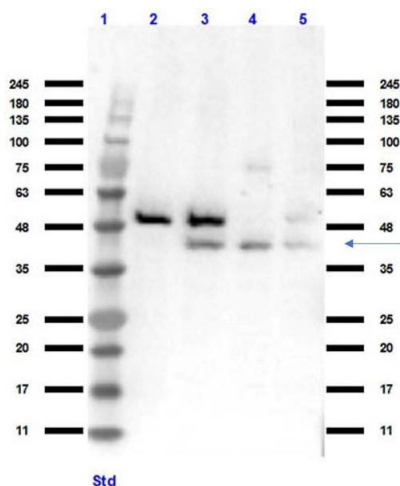
Buffer:	Buffer: 0.02 M Potassium Phosphate, 0.15 M Sodium Chloride, pH 7.2 Stabilizer: None Preservative: 0.01 % (w/v) Sodium Azide
Preservative:	Sodium azide
Precaution of Use:	This product contains Sodium azide: a POISONOUS AND HAZARDOUS SUBSTANCE which should be handled by trained staff only.
Storage:	4 °C,-20 °C
Storage Comment:	Store vial at -20° C prior to opening. Aliquot contents and freeze at -20° C or below for extended storage. Avoid cycles of freezing and thawing. Centrifuge product if not completely clear after standing at room temperature. This product is stable for several weeks at 4° C as an undiluted liquid. Dilute only prior to immediate use.
Expiry Date:	12 months

## Images



### Immunohistochemistry

**Image 1.** Immunohistochemistry of Goat Anti-p38 Antibody  
Immunohistochemistry of Goat Anti-p38 Antibody. Tissue: Human Breast Cancer. Antigen Retrieval: HIER using Citrate Buffer for 20 min. Primary Antibody: Goat Anti-p38 at 1:100 for 30 min at RT. Secondary Antibody: Donkey Anti-Goat HRP Conjugated Antibody at 4µl/mL. Staining: DAB.



### Western Blotting

**Image 2.** Western Blot of Goat Anti-p38 Antibody  
Western Blot of Goat Anti-p38 Antibody. Lane 1: Opal Pre-Stained Molecular Weight Marker . Lane 2: HEK293T p38 KO cell lysate. Lane 3: HEK293T cell lysate. Lane 4: NIH3T3 cell lysate. Lane 5: PC-12 cell lysate. Load 10-35µg/lane. Primary antibody: Goat Anti-p38 at 1:1000 overnight at 4°C. Secondary antibody: Donkey Anti-Goat HRP conjugated Antibody at 1:40,000 at RT for 2 hrs. Blocking Buffer:

BlockOut . Expect: ~42kDa seen at arrow. Other isoforms between 29-42kDa expected. Non Specific Band seen at ~48kDa in lane 1 and 2.