

Datasheet for ABIN6655892
anti-TLR4 antibody (Internal Region)



[Go to Product page](#)

2 Images

Overview

Quantity:	100 µg
Target:	TLR4
Binding Specificity:	Internal Region
Reactivity:	Human
Host:	Rabbit
Clonality:	Polyclonal
Conjugate:	This TLR4 antibody is un-conjugated
Application:	Western Blotting (WB), Flow Cytometry (FACS), Immunohistochemistry (IHC), Immunofluorescence (IF), Fluorescence Microscopy (FM)

Product Details

Purpose:	TLR4 Antibody
Immunogen:	TRL4 Antibody was produced from whole rabbit serum prepared by repeated immunizations raised against synthetic peptide corresponding to an internal region of human TLR4.
Isotype:	IgG
Cross-Reactivity (Details):	A BLAST analysis was used to suggest cross-reactivity with TRL 4 from Human and Mouse based on 100 % homology with the immunizing sequence.
Purification:	Anti-TLR4 Antibody was purified by affinity chromatography.
Sterility:	Sterile filtered

Target Details

Target:	TLR4
Alternative Name:	TLR4 (TLR4 Products)
Background:	<p>Synonyms: ARMD10, CD284, TLR 4, TOLL, Toll like receptor 4</p> <p>Background: The Toll-like receptor (TLR) family in mammal comprises a family of trans-membrane proteins characterized by multiple copies of leucine rich repeats in the extracellular domain and 1L-1 receptor motif in the cytoplasmic domain. Like its counterparts in Drosophila, TLRs signal through adaptor molecules. The TLR family is a phylo-genetically conserved mediator of innate immunity that is essential for microbial recognition. Ten human homologs of TLRs (TLR1-10) have been described. Amongst this family of receptors, TLR2 and TLR4 have been most studied. These studies have suggested that TLR2 and TLR4 may serve as potential main mediators of LPS signaling. The mouse TLR4 cDNA codes for a protein consisting of 839 amino acids, with an approximate molecular weight of 90 kDa.</p> <p>Gene Name: TRL4</p>
Gene ID:	7099
NCBI Accession:	NP_612564
UniProt:	O00206
Pathways:	TLR Signaling , Activation of Innate immune Response , Cellular Response to Molecule of Bacterial Origin , Positive Regulation of Immune Effector Process , Production of Molecular Mediator of Immune Response , Toll-Like Receptors Cascades , Inflammasome , S100 Proteins

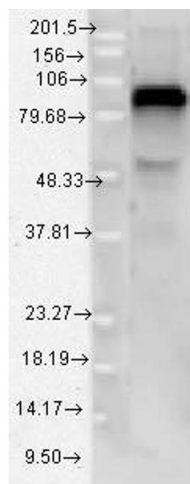
Application Details

Application Notes:	<p>Immunohistochemistry_Dilution: 1:50</p> <p>Flow_Cytometry_Dilution: User Optimized</p> <p>IF_Microscopy_Dilution: User Optimized</p> <p>Western_Blots_Dilution: 1-3 µg/mL</p>
Comment:	Anti-TLR4 Antibody has been tested in WB, IHC, IF microscopy and Flow Cytometry. Expect a band approximately ~75-80kDa when tested against partial recombinant mouse TLR4 (extra-cellular portion plus His-tag). Specific conditions for reactivity should be optimized by the end user.
Restrictions:	For Research Use only

Handling

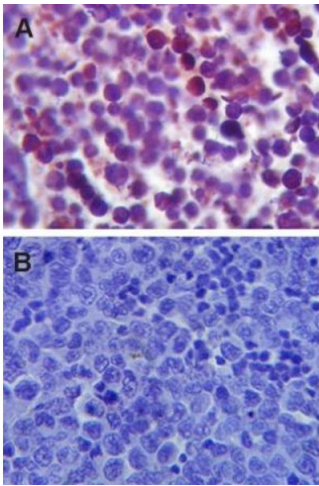
Format:	Liquid
Buffer:	Buffer: 0.02 M Potassium Phosphate, 0.15 M Sodium Chloride, pH 7.2 Stabilizer: 10 mg/mL Bovine Serum Albumin (BSA) - Immunoglobulin and Protease free Preservative: 0.5 % (w/v) Sodium Azide
Preservative:	Sodium azide
Precaution of Use:	This product contains Sodium azide: a POISONOUS AND HAZARDOUS SUBSTANCE which should be handled by trained staff only.
Storage:	4 °C, -20 °C
Storage Comment:	Store vial at -20° C prior to opening. Aliquot contents and freeze at -20° C or below for extended storage. Avoid cycles of freezing and thawing. Centrifuge product if not completely clear after standing at room temperature. This product is stable for several weeks at 4° C as an undiluted liquid. Dilute only prior to immediate use.
Expiry Date:	12 months

Images



Western Blotting

Image 1. TLR4 Western Blot. Western Blot of rabbit anti-TLR4 antibody. Lane 1: Partial Recombinant Mouse TLR4. Primary antibody: TLR4 antibody at 1:1000 for overnight at 4°C. Secondary antibody: Goat anti-rabbit IgG HRP secondary antibody at 1:10,000 for 45 min at RT. Block: 5% Biotin overnight 4°C. Predicted/Observed size:95.6kDa/75-80kD. Other band(s): none.



Immunohistochemistry

Image 2. TLR4 Immunofluorescence
Immunohistochemistry of rabbit anti-TLR4 antibody. Tissue: Formalin-fixed paraffin-embedded mouse spleen tissue. Primary Antibody: TLR4 antibody at 1 µg/mL for 1h at RT. Secondary antibody: Peroxidase rabbit secondary at 1:10,000 for 45 min at RT. Localization: Membrane. Staining: TLR4 as blue/purple signal.