

Datasheet for ABIN6656049
anti-HSPE1 antibody (C-Term)



[Go to Product page](#)

2 Images

Overview

Quantity:	100 µg
Target:	HSPE1
Binding Specificity:	C-Term
Reactivity:	Human
Host:	Rabbit
Clonality:	Polyclonal
Conjugate:	This HSPE1 antibody is un-conjugated
Application:	Western Blotting (WB), ELISA, Immunohistochemistry (IHC), Immunoprecipitation (IP), Immunofluorescence (IF), Fluorescence Microscopy (FM)

Product Details

Purpose:	CPN10 Antibody
Immunogen:	CPN10 Antibody was produced from whole rabbit serum prepared by repeated immunizations with a synthetic peptide corresponding to the c-terminal region of human Cpn10 synthetic peptide.
Isotype:	IgG
Cross-Reactivity (Details):	A BLAST analysis was used to suggest cross-reactivity with Cpn 10 from Human, Mouse, Rat, Bovine, Canine, Guinea pig, Pig, Rabbit, Sheep, and Xenopus based on 100 % homology with the immunizing sequence.
Purification:	Anti-Cpn10 Antibody was purified by Protein A chromatography.
Sterility:	Sterile filtered

Target Details

Target:	HSPE1
Alternative Name:	Cpn10 (HSPE1 Products)
Background:	<p>Synonyms: 10 kDa Chaperonin, Chaperonin 10, Cpn 10, EPF, GROES, Heat Shock 10kD protein1, Hsp10, HSPE1, Early-pregnancy factor</p> <p>Background: Chaperonin 10, otherwise known as Cpn10, (groES in E.coli) make up a family of small heat shock proteins with an approximate molecular mass of 10 kDa (Hsp10s). Cpn10 acts as a co-chaperone and interacts with the Hsp60 family to promote proper folding of polypeptides. Cpn10 and Cpn60 both exhibit sevenfold axis of symmetry and function as a team in the protein folding and assembly process. Cpn10 has been located in human platelets, but is also present in human maternal serum. It has been reported that human Cpn10 is identical with early pregnancy factor, which is involved in control over cell growth and development. This identification suggest that Cpn10 may act like a hormone in stressful situations such as pregnancy.</p> <p>Gene Name: HSPE1</p>
Gene ID:	3336
NCBI Accession:	NP_002148
UniProt:	P61604
Pathways:	Positive Regulation of Endopeptidase Activity

Application Details

Application Notes:	<p>Immunoprecipitation_Dilution: User Optimized</p> <p>ELISA_Dilution: 1:200</p> <p>Immunohistochemistry_Dilution: User Optimized</p> <p>IF_Microscopy_Dilution: 10 µg/mL</p> <p>Western_Blot_Dilution: 1:1000</p>
Comment:	<p>Anti-CPN10 Antibody is tested for use in WB, IHC, IF, and IP. Expect a band approximately ~10kDa on specific lysates. Specific conditions for reactivity should be optimized by the end user.</p>
Restrictions:	For Research Use only

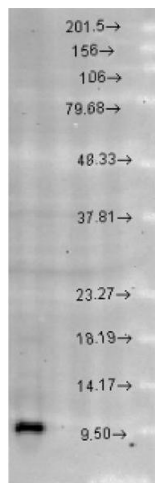
Handling

Format:	Liquid
---------	--------

Handling

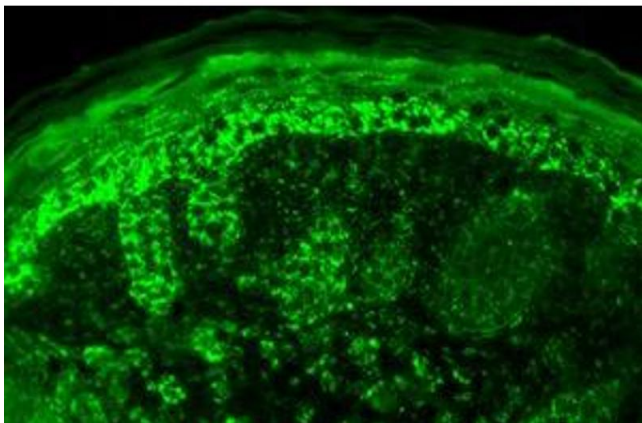
Buffer:	Optional[Buffer]: 0.02 M Potassium Phosphate, 0.15 M Sodium Chloride, pH 7.2 ,0.01 % (w/v) Sodium Azide
Preservative:	Sodium azide
Precaution of Use:	This product contains Sodium azide: a POISONOUS AND HAZARDOUS SUBSTANCE which should be handled by trained staff only.
Storage:	4 °C,-20 °C
Storage Comment:	Store vial at -20° C prior to opening. Aliquot contents and freeze at -20° C or below for extended storage. Avoid cycles of freezing and thawing. Centrifuge product if not completely clear after standing at room temperature. This product is stable for several weeks at 4° C as an undiluted liquid. Dilute only prior to immediate use.
Expiry Date:	12 months

Images



Western Blotting

Image 1. Cpn10 Western Blot. Western Blot of rabbit anti-Cpn10 antibody. Lane 1: Rat brain extract. Load: 10ug. Primary antibody: Cpn10 at 1:1000 overnight at 4°C. Secondary antibody: Goat anti-rabbit IgG HRP at 1:40,000 for 45 min at RT. Blocked: 5% Blotto overnight at 4°C. Predicated/observed size: 10.9 kDa, ~10 kDa for Cpn10.



Immunofluorescence

Image 2. Cpn10 Immunofluorescence. Immunofluorescence Microscopy of rabbit anti-Cpn10 antibody. Tissue: Mouse backskin sections of Transgenic mice. Fixation: N/A. Primary antibody: Cpn10 at 10µg/ml for 1h at RT. Secondary antibody: Fluorescein rabbit secondary antibody at 1:10,000 for 45 min at RT. Localization: Mitochondrion matrix. Staining: Cpn10 as precipitated green signal.