

Datasheet for ABIN6656145

anti-KDEL1 antibody[Go to Product page](#)**1** Image

Overview

Quantity:	200 µg
Target:	KDEL1
Reactivity:	Human
Host:	Rabbit
Clonality:	Polyclonal
Conjugate:	This KDEL1 antibody is un-conjugated
Application:	Western Blotting (WB), Immunofluorescence (IF), Immunohistochemistry (IHC)

Product Details

Purpose:	KDEL Antibody
Immunogen:	KDEL Antibody was produced from whole rabbit serum prepared by repeated immunizations raised against KDEL containing synthetic peptide immunogen.
Isotype:	IgG
Cross-Reactivity (Details):	A BLAST analysis was used to suggest cross-reactivity with KDEL from Human, Mouse, and Rat based on 100 % homology with the immunizing sequence.
Purification:	Anti-KDEL Antibody was purified by affinity chromatography.
Sterility:	Sterile filtered

Target Details

Target:	KDEL1
---------	-------

Target Details

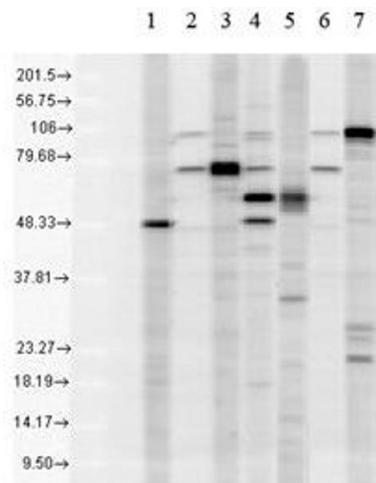
Alternative Name:	KDEL1 (KDEL1 Products)
Background:	<p>Synonyms: Lys Asp Glu Leu, K-D-E-L, ER lumen protein retaining receptor 1, KDEL endoplasmic reticulum protein retention, Kdelr1</p> <p>Background: The endoplasmic reticulum is part of a protein sorting pathway, or in essence, the transportation system of the eukaryotic cell. The majority of endoplasmic reticulum resident proteins are retained in the endoplasmic reticulum through a retention motif. This motif is composed of four amino acids at the C-terminal end of the protein sequence. The most common retention sequence is KDEL (lys-asp-glu-leu). Grp78 and Grp94 and PDI all share the C-terminal KDEL sequence. The presence of carboxy-terminal KDEL appears to be necessary for ER retention and appears to be sufficient to reduce the secretion of proteins from the ER.</p> <p>Gene Name: Kdelr1</p>
Gene ID:	10945
NCBI Accession:	NP_006792
UniProt:	P24390
Pathways:	Maintenance of Protein Location

Application Details

Application Notes:	Optional[Neutralization_Dilution]: 1:1000
Comment:	Anti-KDEL Antibody is tested for use in WB, IF, and IHC. Specific conditions for reactivity should be optimized by the end user.
Restrictions:	For Research Use only

Handling

Format:	Liquid
Buffer:	Buffer: 0.02 M Potassium Phosphate, 0.15 M Sodium Chloride, pH 7.2 Stabilizer: 50 % (v/v) Glycerol
Storage:	4 °C,-20 °C
Storage Comment:	Store vial at -20° C prior to opening. Aliquot contents and freeze at -20° C or below for extended storage. Avoid cycles of freezing and thawing. Centrifuge product if not completely clear after standing at room temperature. This product is stable for several weeks at 4° C as an undiluted liquid. Dilute only prior to immediate use.



Western Blotting

Image 1. KDEL Western Blot. Western Blot of rabbit anti-KDEL antibody. Load: mixed human cell lysates (300ug/gel). Lane 1: PDI control. Lane 2: KDEL control clone. Lane 3: Grp78 control. Lane 4: SPC-109. Lane 5: Calreticulin control. Lane 6: KDEL control clone. Lane 7: Grp94: control. Primary antibody: anti-KDEL at 1:500 for overnight at 4°C. Secondary antibody: Goat anti-rabbit IgG HRP secondary antibody at 1:10,000 for 45 min at RT. Block: 5% Biotin overnight 4°C. Predicted/Observed size: 59kDa/45-110 kDa. Other band(s): Recognizes KDEL proteins, GRP94, Grp78, PDI and calreticulin. It may also see ERp57 and ERp29.