

Datasheet for ABIN6656220
anti-HAPLN2 antibody (Internal Region)



[Go to Product page](#)

3 Images

Overview

Quantity:	100 µg
Target:	HAPLN2
Binding Specificity:	Internal Region
Reactivity:	Human
Host:	Rabbit
Clonality:	Polyclonal
Conjugate:	This HAPLN2 antibody is un-conjugated
Application:	Western Blotting (WB), ELISA, Immunohistochemistry (IHC), Fluorescence Microscopy (FM)

Product Details

Immunogen:	Immunogen: Anti-BRAL1 antibody was prepared from whole rabbit serum produced by repeated immunizations with a 12 amino acid synthetic peptide from near the internal region of human BRAL1. Immunogen Type: Peptide
Isotype:	IgG
Cross-Reactivity:	Human, Mouse (Murine), Rat (Rattus)
Cross-Reactivity (Details):	Cross reactivity with BRAL1 from other sources has not been determined.
Purification:	Anti-BRAL1 Antibody was affinity purified from monospecific antiserum by immunoaffinity chromatography.

Target Details

Target:	HAPLN2
Alternative Name:	BRAL1 (HAPLN2 Products)
Background:	<p>Synonyms: BRAL1 Antibody, BRAL1, Hyaluronan and proteoglycan link protein 2, Brain link protein 1</p> <p>Background: BRAL1 is a member a superfamily consisting of several highly homologous hyaluronan and proteoglycan binding link proteins. BRAL1 is predominantly expressed in brain tissue and spinal cord. Like other members in the link-module superfamily, BRAL1 contains an immunoglobulin-like fold and two proteoglycan tandem repeats (PTRs). Its mRNA expression pattern is similar to other lectican proteoglycans, suggesting that BRAL1 may act to stabilize the binding between the extracellular matrix molecule hyaluronan and brevicin.</p> <p>Immunostaining of mouse brain showed BRAL1 expression at P20 in the white matter of the developing cerebellum and in myelinated fiber tracts in the adult brain, suggesting that expression starts when axonal myelination occurs.</p> <p>Gene Name: HAPLN2</p>
Gene ID:	60484
NCBI Accession:	NP_068589
UniProt:	Q9GZV7

Application Details

Application Notes:	<p>Immunohistochemistry Dilution: 2.5 µg/mL</p> <p>Application Note: Anti-BRAL1 Antibody has been tested for use in ELISA, Western Blotting, Immunohistochemistry and Immunofluorescence. Specific conditions for reactivity should be optimized by the end user. Expect a band at approximately 35 kDa in Western Blots of specific cell lysates and tissues.</p> <p>ELISA Dilution: 1:10,000-1:20,000</p> <p>Western Blot Dilution: 1 - 2 µg/mL</p> <p>IF Microscopy Dilution: 20 µg/mL</p>
Restrictions:	For Research Use only

Handling

Format:	Liquid
Buffer:	Buffer: 0.01 M Sodium Phosphate, 0.25 M Sodium Chloride, pH 7.2

Handling

0.02 % (w/v) Sodium Azide

Stabilizer: None

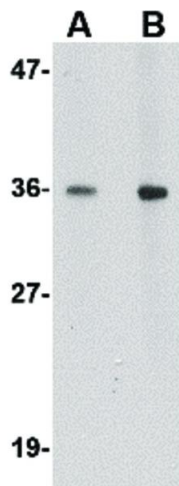
Preservative: Sodium azide

Precaution of Use: This product contains Sodium azide: a POISONOUS AND HAZARDOUS SUBSTANCE which should be handled by trained staff only.

Storage: RT, 4 °C, -20 °C

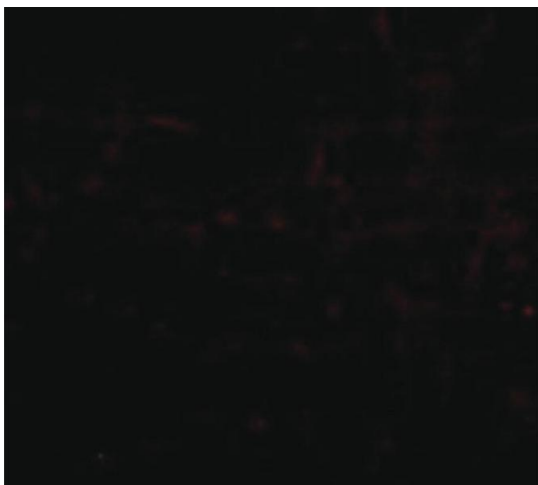
Storage Comment: Store vial at -20° C prior to opening. Aliquot contents and freeze at -20° C or below for extended storage. Avoid cycles of freezing and thawing. Centrifuge product if not completely clear after standing at room temperature. This product is stable for several weeks at 4° C as an undiluted liquid. Dilute only prior to immediate use.

Images



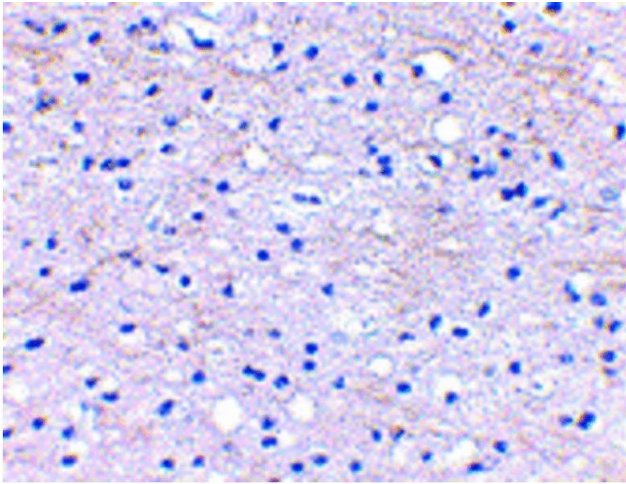
Western Blotting

Image 1. Western Blot of BRAL1 Antibody Western Blot of BRAL1 antibody. Lane A: Human brain tissue lysate at 1 µg/mL. Lane B: Human brain tissue lysate at 2 µg/mL. Load: 35 µg per lane. Secondary antibody: Peroxidase rabbit secondary antibody at 1:10,000 for 45 min at RT. Block: 5% BLOTTO overnight at 4°C. Predicted/Observed size: 37.7 kDa, ~36 kDa for BRAL1.



Immunofluorescence

Image 2. Immunofluorescence of BRAL1 Antibody Immunofluorescence Microscopy of BRAL1 antibody. Tissue: Human brain cells. Fixation: 0.5% PFA. Antigen retrieval: not required. Primary antibody: BRAL1 antibody at 20 µg/mL for 1 h at RT. Secondary antibody: Fluorescein rabbit secondary antibody at 1:10,000 for 45 min at RT. Staining: BRAL1 as a red fluorescent signal.



Immunohistochemistry

Image 3. Immunohistochemistry of BRAL1 Antibody
Immunohistochemistry of BRAL1 antibody. Tissue: Human brain tissue Fixation: formalin fixed paraffin embedded. Antigen retrieval: not required. Primary antibody: BRAL1 antibody at 2.5 µg/mL for 1 h at RT. Secondary antibody: Peroxidase rabbit secondary antibody at 1:10,000 for 45 min at RT. Localization: BRAL1 is nuclear and occasionally cytoplasmic. Staining: BRAL1 as a precipitated red signal with hematoxylin purple nuclear counterstain.