

Datasheet for ABIN6656508

## anti-TAO Kinase 2 antibody (pSer181)



[Go to Product page](#)

### 1 Image

#### Overview

|                      |   |
|----------------------|---|
| Quantity:            | 100 µL                                      |
| Target:              | TAO Kinase 2 (TAOK2)                        |
| Binding Specificity: | pSer181                                     |
| Reactivity:          | Human                                       |
| Host:                | Rabbit                                      |
| Clonality:           | Polyclonal                                  |
| Conjugate:           | This TAO Kinase 2 antibody is un-conjugated |
| Application:         | Western Blotting (WB)                       |

#### Product Details

|                             |  |
|-----------------------------|--|
| Purpose:                    | TAO2 phospho S181 Antibody   |
| Immunogen:                  | Anti-TAO2 pS181 Antibody was produced in rabbit by repeated immunizations with synthetic phospho-peptide corresponding to amino acid residues surrounding Ser181 of TAO2 protein.  |
| Isotype:                    | IgG  |
| Cross-Reactivity (Details): | Anti-TAO2 pS181 Antibody is directed against human TAO2 protein phosphorylated at Ser181.  |
| Purification:               | TAO2 pS181 antibodies are prepared from monospecific antiserum by immunoaffinity chromatography using phospho peptide coupled to agarose beads followed by solid phase adsorption(s) against non-phospho peptide and non-specific peptide to remove any unwanted reactivities. |

## Target Details

|                   |   |
|-------------------|---|
| Target:           | TAO Kinase 2 (TAOK2)  |
| Alternative Name: | TAO2 ( <a href="#">TAOK2 Products</a> )   |
| Background:       | <p>Synonyms: Serine/threonine-protein kinase TAO2, Kinase from chicken homolog C, hKFC-C, Prostate-derived sterile 20-like kinase 1, PSK-1, Thousand and one amino acid protein kinase 2</p> <p>Background: TAO2pS181 Antibody detects TAO2. In vitro, TAO (thousand and one amino acid) protein kinase 2 (TAO2) activates MAP/ERK kinases (MEKs) 3, 4, and 6 toward their substrates p38 MAP kinase JNK/SAPK. This and more recent work has led to the proposal that the TAO protein kinases play an essential role in signaling from physiological agonists to the stress-responsive p38 MAPKs. Autophosphorylation of TAO2 may play a role in the mechanism of TAO2 activation. The MEK binding domain of TAO2 is autophosphorylated on both serine and threonine residues and Ser181 is located within this domain. Anti-TAO2 pS181 Antibody is ideal for investigators involved in Cell Signaling, Neuroscience, Signal Transduction research.</p> <p>Gene Name: TAOK2</p> |
| Gene ID:          | 9344  |
| UniProt:          | <a href="#">Q9UL54</a>  |
| Pathways:         | <a href="#">Cell-Cell Junction Organization</a>   |

## Application Details

|                    |   |
|--------------------|---|
| Application Notes: | Optional[Nutralization_Dilution]: 1:1000  |
| Comment:           | Anti-TAO2 pS181 (Rabbit) antibody is tested for use in Western Blotting. Expect a band of approximately 120 kDa in size corresponding to TAO2 protein phosphorylated at Ser181 in the appropriate cell lysate or extract. Researchers should determine optimal titers for applications that are not stated below. |
| Restrictions:      | For Research Use only   |

## Handling

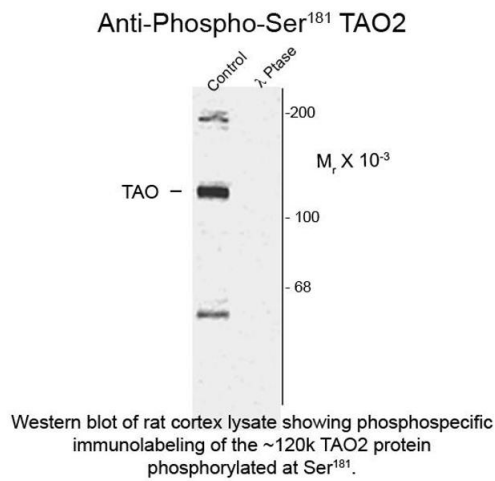
|                  |   |
|------------------|---|
| Format:          | Liquid  |
| Buffer:          | Buffer: 0.01 M HEPES, 0.15 M Sodium Chloride, pH 7.5<br>Stabilizer: 0.1 mg/mL Bovine Serum Albumin (BSA) - IgG and Protease free, 50 % (v/v) Glycerol |
| Storage:         | 4 °C,-20 °C   |
| Storage Comment: | Store vial at -20° C prior to opening. This product is stable at 4° C as an undiluted liquid. For   |

Handling

extended storage, aliquot contents and freeze at -20° C or below. Avoid cycles of freezing and thawing. Dilute only prior to immediate use.

Expiry Date: 12 months

Images



Western Blotting

**Image 1.** Western blot of Anti-TAO2 pS181 (Rabbit) Antibody - 600-401-E41 Western Blot of Rabbit anti-TAO2 pS181 antibody. Lane 1: rat cortex lysate (control). Lane 2: λ-Ptase. Load: 10 µg per lane. Primary antibody: TAO2 pS181 antibody at 1:1,000 for overnight at 4°C. Secondary antibody: rabbit secondary antibody at 1:10,000 for 45 min at RT. Block: 5% BLOTTO overnight at 4°C. Predicted/Observed size: 120 kDa for TAO2 pS181. Other band(s): TAO2 pS181 splice variants and isoforms.