

Datasheet for ABIN6656728

anti-TLR5 antibody

3 Images

[Go to Product page](#)

Overview

Quantity:	100 µg
Target:	TLR5
Reactivity:	Human
Host:	Rabbit
Clonality:	Polyclonal
Conjugate:	This TLR5 antibody is un-conjugated
Application:	Western Blotting (WB), Immunohistochemistry (IHC), Flow Cytometry (FACS)

Product Details

Immunogen:	<p>Immunogen: TLR5 Antibody was produced from whole rabbit serum prepared by repeated immunizations with a KLH-conjugated peptide corresponding to internal amino acids on human TLR5 protein.</p> <p>Immunogen Type: Peptide</p>
Isotype:	IgG
Cross-Reactivity:	Human, Mouse (Murine), Rat (Rattus)
Purification:	Anti-TLR5 Antibody was purified by Protein G chromatography. A BLAST analysis was used to suggest cross-reactivity with Anti-TLR5 from human, rat and mouse based on 100% homology with the immunizing sequence. Cross-reactivity with Anti-TLR5 from other sources has not been determined.

Target Details

Target:	TLR5
Alternative Name:	TLR5 (TLR5 Products)
Background:	<p>Synonyms: TIL3, Toll-like receptor 5, Toll/interleukin-1 receptor-like protein 3</p> <p>Background: Anti-TLR5 Antibody detects human TLR5. The Toll-like receptor (TLR) family in mammal comprises a family of transmembrane proteins characterized by multiple copies of leucine rich repeats in the extracellular domain and IL-1 receptor motif in the cytoplasmic domain. Like its counterparts in Drosophila, TLRs signal through adaptor molecules and could constitute an important and unrecognized component of innate immunity in humans. The TLR family is a phylogenetically conserved mediator of innate immunity that is essential for microbial recognition. TLRs characterized so far activate the MyD88/interleukin-1 receptor-associated kinase (IRAK) signaling pathway. Thirteen homologs of TLRs (TLR1-13) have been described. Toll-like receptor 5 (TLR5) expression is upregulated following exposure to bacteria or to the TLR5 agonist, flagellin. Gram-negative bacteria, stimulate monocyte/macrophage cells in a TLR5-specific, CD14-independent manner. The TLR5 receptor thus appears to be the principal means by which the innate immune system recognizes flagellated bacterial pathogens. Anti-TLR5 Antibody is ideal for investigator involved in cytokine and growth factor research.</p> <p>Gene Name: TLR5</p>
Gene ID:	7100
NCBI Accession:	NP_003259
UniProt:	O60602
Pathways:	TLR Signaling , Activation of Innate immune Response , Cellular Response to Molecule of Bacterial Origin , Toll-Like Receptors Cascades

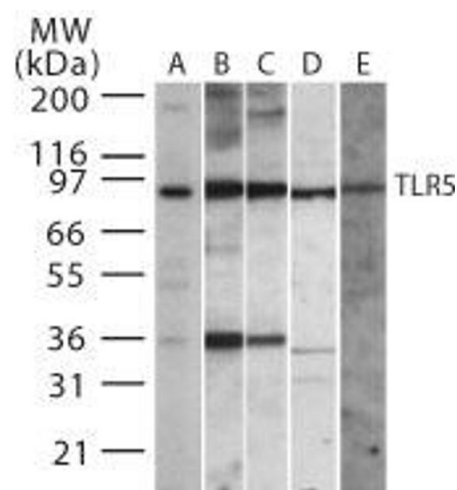
Application Details

Application Notes:	<p>Immunohistochemistry Dilution: 10 µg/mL (paraffin)</p> <p>Application Note: Anti-TLR5 Antibody is suitable for use in Flow (I), IHC (p) and WB. Expect a band approximately 97 kDa on specific lysates. Specific conditions for reactivity should be optimized by the end user.</p> <p>Flow Cytometry Dilution: 1-2 µg/10⁶ cells</p> <p>Western Blot Dilution: 1-3 µg/mL</p>
Restrictions:	For Research Use only

Handling

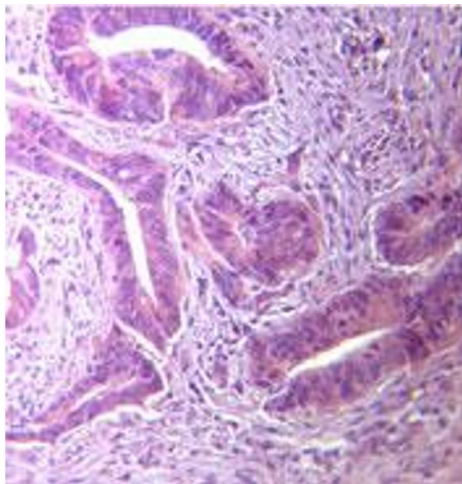
Format:	Liquid
Buffer:	0.02 M Potassium Phosphate, 0.15 M Sodium Chloride, pH 7.20.05 % (w/v) Sodium Azide
Preservative:	Sodium azide
Precaution of Use:	This product contains Sodium azide: a POISONOUS AND HAZARDOUS SUBSTANCE which should be handled by trained staff only.
Storage:	RT,4 °C,-20 °C
Storage Comment:	Store vial at -20° C prior to opening. Aliquot contents and freeze at -20° C or below for extended storage. Avoid cycles of freezing and thawing. Centrifuge product if not completely clear after standing at room temperature. This product is stable for several weeks at 4° C as an undiluted liquid. Dilute only prior to immediate use.

Images



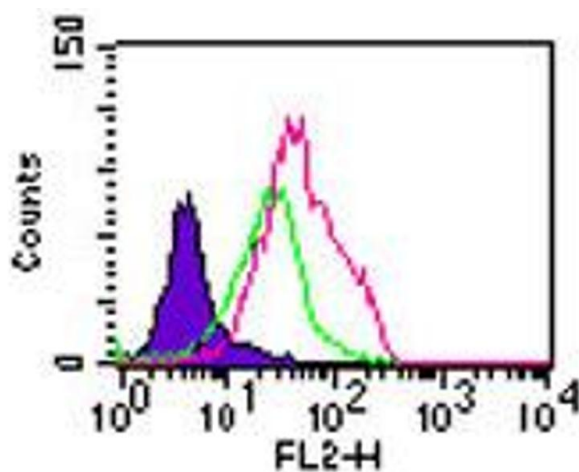
Western Blotting

Image 1. TLR5 Western Blot. Western Blot of Rabbit Anti-TLR5 antibody. Lane A: Ramos. Lane B: RAW. Lane C: mouse spleen. Lane D: mouse lung. Lane E: rat lung lysate. Primary antibody: TLR5 at 2 µg/mL for overnight at 4°C. Secondary antibody: rabbit secondary antibody at 1:10,000 for 45 min at RT. Block: 5% BLOTTO overnight at 4°C. Predicted/Observed size: 80 kDa for TLR5. Other band(s): none.



Immunohistochemistry

Image 2. TLR5 Immunohistochemistry. Immunohistochemistry of Rabbit Anti-TLR5 antibody. Tissue: stomach tumor. Fixation: formalin fixed paraffin embedded. Antigen retrieval: not required. Primary antibody: TLR5 antibody at 10 µg/mL for 1 h at RT. Secondary antibody: Peroxidase rabbit secondary antibody at 1:10,000 for 45 min at RT. Localization: TLR5 is a single-pass type 1 membrane protein. Staining: TLR5 as a precipitated red signal with hematoxylin purple nuclear counterstain.



Flow Cytometry

Image 3. TLR5 Flow Cytometry Flow Cytometry of Rabbit Anti-TLR5 antibody. Cells: Balb/c mouse splenocytes. Stimulation: none. Primary Antibody: TLR5 antibody at 2 ug/10⁶ cells (red) and rabbit IgG isotype control (green). Secondary Antibody: Goat anti-rabbit PE conjugated.