



## Datasheet for ABIN6657363 **anti-Fractin antibody (C-Term)**



[Go to Product page](#)

### 1 Image

#### Overview

Quantity:	100 µL
Target:	Fractin
Binding Specificity:	C-Term
Reactivity:	Human
Host:	Rabbit
Clonality:	Polyclonal
Conjugate:	This Fractin antibody is un-conjugated
Application:	Western Blotting (WB), Immunohistochemistry (IHC)

#### Product Details

Immunogen:	Immunogen: Anti-Fractin Antibody was produced in rabbit by repeated immunizations with Fractin- Synthetic peptide corresponding to amino acid residues from the C-terminal region conjugated to KLH. Immunogen Type: Peptide
Cross-Reactivity:	Human, Rat (Rattus)
Purification:	Anti-Fractin antibody is directed against human Fractin. Anti-Fractin antibodies were prepared from monospecific neat serum. Anti-Fractin antibody is specific for the ~32 kDa fractin protein in Western blots with no reactivity to intact actin. There is often a ladder of smaller bands in cells or culture or in vivo preparations due to further degradation by other proteases. Reactivity is expected against human and rat.

## Target Details

---

Target: Fractin

Abstract: [Fractin Products](#)

Background: Synonyms: Fragment of actin  
Background: Fractin Antibody detects human Fractin (fragment of actin) which is a caspase-specific cleavage product of actin and serves as a novel marker of apoptosis-related events. The antibody has been shown to detect the processes and cell bodies of degenerating neurons and plaque-associated microglia in Alzheimer's disease. It has recently been reported that Fractin may have a functional role in apoptotic signaling in oligodendrocytes. Anti-Fractin Antibody is ideal for investigators involved in Cell Apoptosis and, more generally in Neuroscience.  
Gene Name: fragment of Actin

Gene ID: 60

UniProt: [P60709](#)

## Application Details

---

Application Notes: Immunohistochemistry Dilution: 1:100  
Application Note: Anti-Fractin (Rabbit) Antibody is suitable for use in Western Blotting and IHC. Excepted reactivity to the 32 kDa fractin protein in Western blots. Specific conditions for reactivity should be optimized by the end user.  
Western Blot Dilution: 1:1000

Restrictions: For Research Use only

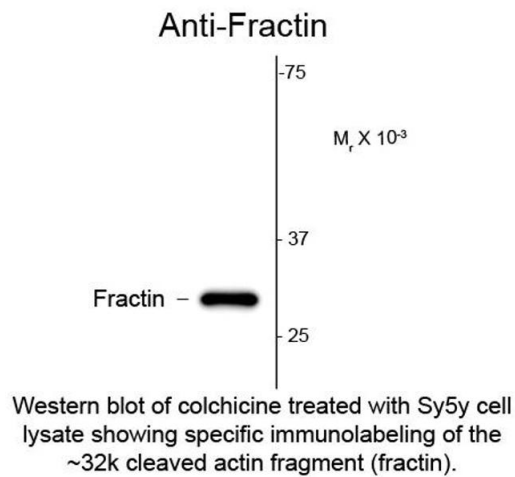
## Handling

---

Format: Liquid

Storage: 4 °C,-20 °C

Storage Comment: Store vial at -20° C prior to opening. This product is stable at 4° C as an undiluted liquid. For extended storage, aliquot contents and freeze at -20° C or below. Avoid cycles of freezing and thawing. Dilute only prior to immediate use.



### Western Blotting

**Image 1.** Western Blot of Anti-Fractin (Rabbit) Antibody - 100-401-D40 Western Blot of Rabbit Anti-Fractin (Rabbit) Antibody. Lane 1: colchicine treated Sy5y cell lysate. Lane 2: none. Load: 10 µg per lane. Primary antibody: Fractin antibody at 1:1000 for overnight at 4°C. Secondary antibody: rabbit secondary antibody at 1:10,000 for 45 min at RT. Block: 5% BLOTTO overnight at 4°C. Predicted/Observed size: ~ 32k , ~ 32k for cleaved actin fragment (fractin). Other band(s): none.