



[Go to Product page](#)

Datasheet for ABIN6657369

anti-Cytochrome P450 antibody

3 Images

Overview

Quantity:	100 µg
Target:	Cytochrome P450 (CYP)
Reactivity:	Human
Host:	Rabbit
Clonality:	Polyclonal
Conjugate:	This Cytochrome P450 antibody is un-conjugated
Application:	Western Blotting (WB), Immunohistochemistry (IHC), ELISA, Fluorescence Microscopy (FM)

Product Details

Immunogen:	Immunogen: Anti-Cytochrome p450 antibody was prepared from whole rabbit serum produced by repeated immunizations with a synthetic peptide corresponding to an internal portion of human cytochrome p450 conjugated to Keyhole Limpet Hemocyanin (KLH). Immunogen Type: Peptide
Isotype:	IgG
Cross-Reactivity:	Human, Rat (Rattus)
Purification:	This affinity purified antibody is directed against human cytochrome p450. This product was affinity purified from monospecific antiserum by immunoaffinity purification. Blast analysis the immunogen sequence shows 83.3% identity with mouse, rat, hamster, and monkey.

Target Details

Target:	Cytochrome P450 (CYP)
---------	-----------------------

Target Details

Alternative Name: CYTOCHROME p450 ([CYP Products](#))

Background: Synonyms: Rabbit Anti-Cytochrome p450 Antibody, Rabbit Anti-CYP1A1 Antibody, CYP1A1, Cytochrome P450 form 6, Cytochrome P450-C, Cytochrome P450-P1

Background: Cytochrome p450 belongs to an enzyme superfamily that catalyzes many reactions such as the synthesis of cholesterol, lipids, steroids by oxidizing the compounds and plays a role in drug metabolism. The protein has been known to be stimulated by cigarette smoke. On-going studies link the cytochrome p450 protein with lung cancer. In the liver microsome, it is part of the NADPH-dependent electron transport pathway. The protein has been found expressed in the lung, lymphocytes and placenta. Anti-Cytochrome p450 antibody is useful for researchers interested in cancer research and enzyme research.

Gene Name: CYP1A1

Gene ID: 1543

NCBI Accession: [NP_000490](#)

UniProt: [P04798](#)

Pathways: [Steroid Hormone Biosynthesis](#), [C21-Steroid Hormone Metabolic Process](#)

Application Details

Application Notes: Immunohistochemistry Dilution: 1:100 - 1:200

Application Note: Anti-Cytochrome p450 has been tested in Western Blot, Immunofluorescence and Immunohistochemistry. Expect a band at ~58kda in western blot using appropriate lysates. Positive controls used include an overexpressing lysate and PC-12 at 1 µg/mL for WB, human kidney and/or lung for IHC, HepG2 for IF at 15 µg/mL.

ELISA Dilution: 5.0 µg/mL

Western Blot Dilution: 1:1000

IF Microscopy Dilution: 15 µg/mL

Restrictions: For Research Use only

Handling

Format: Liquid

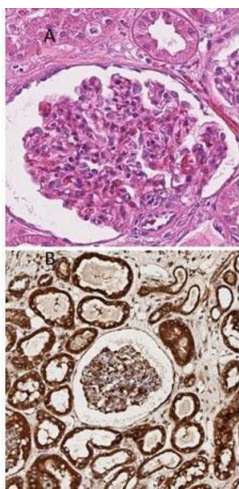
Buffer: Buffer: 0.02 M Potassium Phosphate, 0.15 M Sodium Chloride, pH 7.2
0.01 % (w/v) Sodium Azide

Preservative: Sodium azide

Handling

Precaution of Use:	This product contains Sodium azide: a POISONOUS AND HAZARDOUS SUBSTANCE which should be handled by trained staff only.
Storage:	RT, 4 °C, -20 °C
Storage Comment:	Store vial at -20° C prior to opening. Aliquot contents and freeze at -20° C or below for extended storage. Avoid cycles of freezing and thawing. Centrifuge product if not completely clear after standing at room temperature. This product is stable for several weeks at 4° C as an undiluted liquid. Dilute only prior to immediate use.

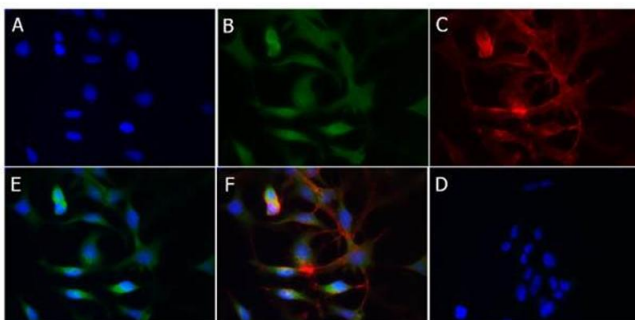
Images



A. Human kidney H&E.
B. Cytochrome P450 in kidney (20X), 1:100
C. Cytochrome P450 in kidney (40X), 1:100

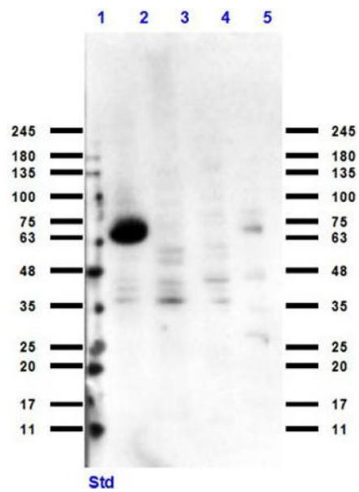
Immunohistochemistry

Image 1. Immunohistochemistry of Rabbit Anti-Cytochrome p450 Antibody - Immunohistochemistry of Rabbit Anti-Cytochrome p450 Antibody. Tissue: Human Kidney. Antigen Retrieval: HIER using Citrate Buffer for 20 min. Primary Antibody: Rabbit Anti-Cytochrome p450 at 1:100 for 30 min at RT. Secondary Antibody: Goat Anti-Rabbit HRP conjugated antibody. Staining: DAB. Counterstain: Hematoxylin.



Immunofluorescence

Image 2. Immunofluorescence of Rabbit Anti-Cytochrome p450 Antibody Immunofluorescence of Rabbit Anti-Cytochrome p450 Antibody. Cell Line: HepG2. Fixation: 4% PFA. Permeabilization: 0.3% Triton X-100. Primary Antibody: Rabbit Anti-Cytochrome p450 Antibody at 15µg/mL overnight at 4°C. Secondary Antibody: Donkey Anti-Rabbit 488 Conjugated Antibody at 5µg/mL for 1hr at RT. A: Nuclear counter stain: DAPI. B: Anti-Cytochrome p450 and Anti-Rabbit 488. C: Actin- Phalloidin555. D: Secondary Only. E: Merge A+B. F: Merge A+B+C.



Western Blotting

Image 3. Western Blot of Rabbit Anti-Cytochrome p450 Antibody Western Blot of Rabbit Anti-Cytochrome p450 Antibody. Lane 1: Opal Pre-Stained Molecular Weight Marker . Lane 2: CYP1A1 Over Expressing Lysate. Lane 3: HEK239T Cell Lysate. Lane 4: K562 Cell Lysate. Lane 5: PC-12 Cell Lysate. Load: 10-35µg/lane. Primary Antibody: Rabbit Anti-Cytochrome p450 Antibody at 1:1000 overnight at 4°C. Secondary Antibody: Goat Anti-Rabbit HRP conjugated Antibody at 1:70,000 at RT for 2hrs. Blocking buffer: BlockOut . Expect: ~58kDa.