

Datasheet for ABIN6657370 **anti-CYP1A1 antibody**

3 Images



[Go to Product page](#)

Overview

Quantity:	25 µL
Target:	CYP1A1
Reactivity:	Human
Host:	Rabbit
Clonality:	Polyclonal
Conjugate:	This CYP1A1 antibody is un-conjugated
Application:	Western Blotting (WB), ELISA, Immunohistochemistry (IHC), Immunofluorescence (IF), Multiplex Assay (MA), Fluorescence Microscopy (FM)

Product Details

Purpose:	Cytochrome P450 Antibody
Immunogen:	Anti-Cytochrome p450 antibody was prepared from whole rabbit serum produced by repeated immunizations with a synthetic peptide corresponding to an internal portion of human cytochrome p450 conjugated to Keyhole Limpet Hemocyanin (KLH).
Isotype:	IgG
Cross-Reactivity (Details):	This affinity purified antibody is directed against human cytochrome p450.
Purification:	This product was affinity purified from monospecific antiserum by immunoaffinity purification.
Sterility:	Sterile filtered

Target Details

Target:	CYP1A1
---------	--------

Target Details

Alternative Name:	CYP1A1 (CYP1A1 Products)
Background:	<p>Synonyms: Rabbit Anti-Cytochrome p450 Antibody, Rabbit Anti-CYP1A1 Antibody, CYP1A1, Cytochrome P450 form 6, Cytochrome P450-C, Cytochrome P450-P1</p> <p>Background: Cytochrome p450 belongs to an enzyme superfamily that catalyzes many reactions such as the synthesis of cholesterol, lipids, steroids by oxidizing the compounds and plays a role in drug metabolism. The protein has been known to be stimulated by cigarette smoke. On-going studies link the cytochrome p450 protein with lung cancer. In the liver microsome, it is part of the NADPH-dependent electron transport pathway. The protein has been found expressed in the lung, lymphocytes and placenta. Anti-Cytochrome p450 antibody is useful for researchers interested in cancer research and enzyme research.</p> <p>Gene Name: CYP1A1</p>
Gene ID:	1543
NCBI Accession:	NP_000490
UniProt:	P04798
Pathways:	Steroid Hormone Biosynthesis , Regulation of Lipid Metabolism by PPARalpha

Application Details

Application Notes:	<p>ELISA_Dilution: 5 µg/mL</p> <p>Immunohistochemistry_Dilution: 1:100 - 1:200</p> <p>IF_Microscopy_Dilution: 15 µg/mL</p> <p>Western_Blot_Dilution: 1:1000</p>
Comment:	<p>Anti-Cytochrome p450 has been tested in ELISA, Western Blot, Immunofluorescence and Immunohistochemistry. Expect a band at ~58kda in western blot using appropriate lysates. Positive controls used include an overexpressing lysate and PC-12 at 1µg/mL for WB, human kidney and/or lung for IHC, HepG2 for IF at 15 µg/mL.</p>
Restrictions:	For Research Use only

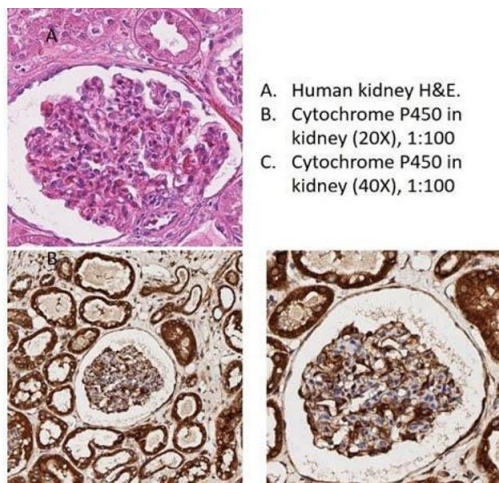
Handling

Format:	Liquid
Buffer:	<p>Buffer: 0.02 M Potassium Phosphate, 0.15 M Sodium Chloride, pH 7.2</p> <p>Stabilizer: None</p> <p>Preservative: 0.01 % (w/v) Sodium Azide</p>

Handling

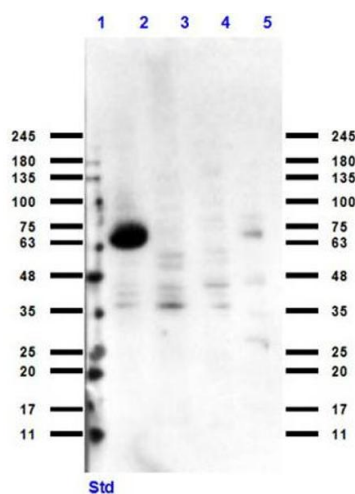
Preservative:	Sodium azide
Precaution of Use:	This product contains Sodium azide: a POISONOUS AND HAZARDOUS SUBSTANCE which should be handled by trained staff only.
Storage:	-20 °C
Storage Comment:	Store vial at -20° C or below prior to opening. This vial contains a relatively low volume of reagent (25 µL). To minimize loss of volume dilute 1:10 by adding 225 µL of the buffer stated above directly to the vial. Recap, mix thoroughly and briefly centrifuge to collect the volume at the bottom of the vial. Use this intermediate dilution when calculating final dilutions as recommended below. Store the vial at -20°C or below after dilution. Avoid cycles of freezing and thawing.
Expiry Date:	12 months

Images



Immunohistochemistry

Image 1. Immunohistochemistry of Rabbit Anti-Cytochrome p450 Antibody - Immunohistochemistry of Rabbit Anti-Cytochrome p450 Antibody. Tissue: Human Kidney. Antigen Retrieval: HIER using Citrate Buffer for 20 min. Primary Antibody: Rabbit Anti-Cytochrome p450 at 1:100 for 30 min at RT. Secondary Antibody: Goat Anti-Rabbit HRP conjugated antibody. Staining: DAB. Counterstain: Hematoxylin.



Western Blotting

Image 2. Western Blot of Rabbit Anti-Cytochrome p450 Antibody Western Blot of Rabbit Anti-Cytochrome p450 Antibody. Lane 1: Opal Pre-Stained Molecular Weight Marker . Lane 2: CYP1A1 Over Expressing Lysate. Lane 3: HEK239T Cell Lysate. Lane 4: K562 Cell Lysate. Lane 5: PC-12 Cell Lysate. Load: 10-35µg/lane. Primary Antibody: Rabbit Anti-Cytochrome p450 Antibody at 1:1000 overnight at 4°C. Secondary Antibody: Goat Anti-Rabbit HRP conjugated Antibody at 1:70,000 at RT for 2hrs. Blocking buffer:

BlockOut . Expect: ~58kDa.

Immunofluorescence

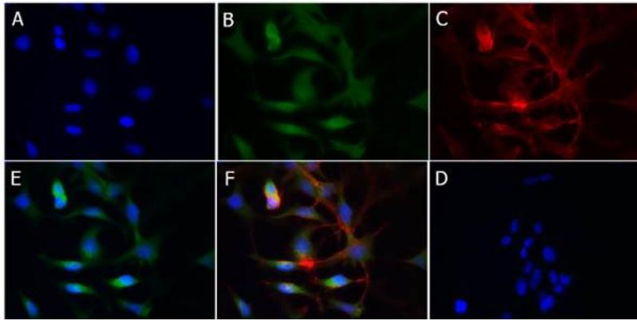


Image 3. Immunofluorescence of Rabbit Anti-Cytochrome p450 Antibody. Cell Line: HepG2. Fixation: 4% PFA. Permeabilization: 0.3% Triton X-100. Primary Antibody: Rabbit Anti-Cytochrome p450 Antibody at 15µg/mL overnight at 4°C. Secondary Antibody: Donkey Anti-Rabbit 488 Conjugated Antibody at 5µg/mL for 1hr at RT. A: Nuclear counter stain: DAPI. B: Anti-Cytochrome p450 and Anti-Rabbit 488. C: Actin- Phalloidin555. D: Secondary Only. E: Merge A+B. F: Merge A+B+C.