

Datasheet for ABIN6657515
anti-ABCB11 antibody (C-Term)



[Go to Product page](#)

1 Image

Overview

Quantity:	100 µg
Target:	ABCB11
Binding Specificity:	C-Term
Reactivity:	Human
Host:	Rabbit
Clonality:	Polyclonal
Conjugate:	This ABCB11 antibody is un-conjugated
Application:	Western Blotting (WB), Immunohistochemistry (IHC), Immunofluorescence (IF), Flow Cytometry (FACS)

Product Details

Purpose:	ABCB11 Antibody
Immunogen:	ABCB11 affinity purified antibody was prepared from whole rabbit serum produced by repeated immunizations with a synthetic peptide corresponding to a sequence at the C-terminal of human ABCB11, different from the related mouse and rat sequences by three amino acids.
Isotype:	IgG
Cross-Reactivity (Details):	Anti-ABCB11 antibody is directed against human ABCB11 protein.
Purification:	The product was affinity purified from monospecific antiserum by immunoaffinity purification.

Target Details

Target:	ABCB11
---------	--------

Target Details

Alternative Name:	ABCB11 (ABCB11 Products)
Background:	<p>Synonyms: ATP-binding cassette sub-family B member 11, BSEP, Bile Salt Export Pump</p> <p>Background: Bile Salt Export Pump (BSEP) is a protein which in humans is encoded by the ABCB 11 gene. It is a member of the superfamily of ATP-binding cassette (ABC) transporters, also known as ABCB11. It is mapped to chromosome 2q24. The BSEP protein is mainly expressed in the liver. ABCB11 is a gene associated with progressive familial intrahepatic cholestasis type 2 (PFIC2) which caused by mutations in the ABCB11 gene will increases the risk of hepatocellular carcinoma in early life. This antibody is suitable for researchers interested in signal transduction and cancer research.</p> <p>Gene Name: ABCB11</p>
Gene ID:	8647
NCBI Accession:	NP_003733
UniProt:	O95342

Application Details

Application Notes:	<p>Immunohistochemistry_Dilution: 0.5-1 µg/mL</p> <p>Western_Blot_Dilution: 0.1-0.5 µg/mL</p>
Comment:	<p>Anti-ABCB11 Antibody is tested for IHC-Fr, IHC-P, IF, FLOW, and Western Blotting. Positive control rat liver, mouse liver, and SMMC whole cell lysate used at 40µg load and 0.5µg/mL incubation in western blot and rat mouse, and human liver tissue for IHC-P. Specific conditions for reactivity should be optimized by the end user. Expect a band approximately ~146.4 kDa corresponding to the appropriate cell lysate or extract.</p>
Restrictions:	For Research Use only

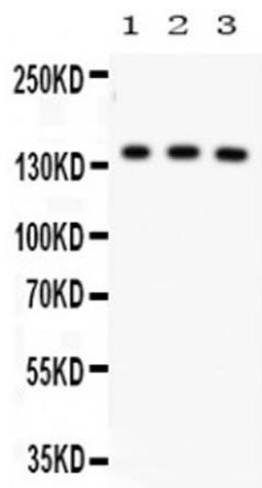
Handling

Format:	Lyophilized
Reconstitution:	<p>Reconstitution_Buffer: Restore with deionized water (or equivalent)</p> <p>Reconstitution_Volume: 200µL</p>
Buffer:	<p>Buffer: 0.9 mg NaCl, 0.2 mg Na₂HPO₄, 0.05 mg Sodium azide</p> <p>Stabilizer: 5 mg BSA</p> <p>Preservative: 0.05 mg Thimerosal</p>
Preservative:	Thimerosal (Merthiolate)

Handling

Precaution of Use:	This product contains Thimerosal (Merthiolate): a POISONOUS AND HAZARDOUS SUBSTANCE which should be handled by trained staff only.
Storage:	4 °C,-20 °C
Storage Comment:	Store vial at 4° C prior to opening. Aliquot contents and freeze at -20° C or below for extended storage. Avoid cycles of freezing and thawing. Centrifuge product if not completely clear after standing at room temperature. This product is stable for several weeks at 4° C as an undiluted liquid. Dilute only prior to immediate use.
Expiry Date:	12 months

Images



Western Blotting

Image 1. Western Blot of Anti-ABCB11 Antibody. Western Blot of Anti-ABCB11 Antibody. Lane 1: Rat Liver Tissue Lysate at 50ug. Lane 2: Mouse Liver Tissue Lysate at 50ug. Lane 3: SMMC Whole Cell Lysate at 40ug. Primary Antibody: Anti ABCB11 at 0.5ug/ml. Predicted/Observed size: 146kDa.