

Datasheet for ABIN6657772
anti-BRD2 antibody (Internal Region)[Go to Product page](#)

2 Images

Overview

Quantity:	100 µL
Target:	BRD2
Binding Specificity:	Internal Region
Reactivity:	Mouse
Host:	Rabbit
Clonality:	Polyclonal
Conjugate:	This BRD2 antibody is un-conjugated
Application:	Western Blotting (WB), ELISA

Product Details

Immunogen:	Immunogen: Anti-Brd2 Antibody was produced in rabbits by repeated immunizations with a synthetic peptide containing an amino acid sequence from the internal part of mouse Brd2. Immunogen Type: Peptide
Cross-Reactivity (Details):	Cross reactivity with Brd2 from other species not tested.
Purification:	Anti-Brd2 Antibody is monospecific antiserum processed by delipidation and defibrination followed by sterile filtration.

Target Details

Target:	BRD2
Alternative Name:	Brd2 (BRD2 Products)
Background:	Synonyms: Bromodomain-containing protein 2, Female sterile homeotic-related protein 1, Fsrg-

Target Details

1, Protein RING3

Background: Brd2, a mitogen-activated kinase localized to the nucleus, is a putative transcriptional regulator which interacts with E2F1 and with histone H4 acetylated at 'Lys-13'. It is expressed during development and may be involved in growth control. Brd2 also may play a role in spermatogenesis or folliculogenesis and may be involved in some types of leukemia and in juvenile myoclonic epilepsy. Anti-Brd2 Antibody is ideal for research Gene Expression, Cell Cycle Control and Cancer.

Gene Name: BRD2

Gene ID:	14312
NCBI Accession:	NP_001191902
UniProt:	Q7JJ13
Pathways:	Chromatin Binding , SARS-CoV-2 Protein Interactome , The Global Phosphorylation Landscape of SARS-CoV-2 Infection

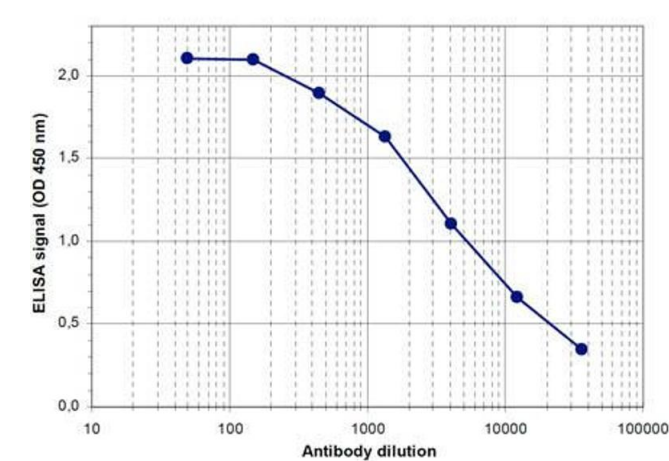
Application Details

Application Notes:	<p>Application Note: Anti-Brd2 Antibody is suitable for ELISA and Western Blots. Specific conditions for reactivity should be optimized by the end user. Expect a band approximately 68 kDa in the appropriate cell lysate or extract.</p> <p>ELISA Dilution: 1:100</p> <p>Western Blot Dilution: 1:1,000</p>
Restrictions:	For Research Use only

Handling

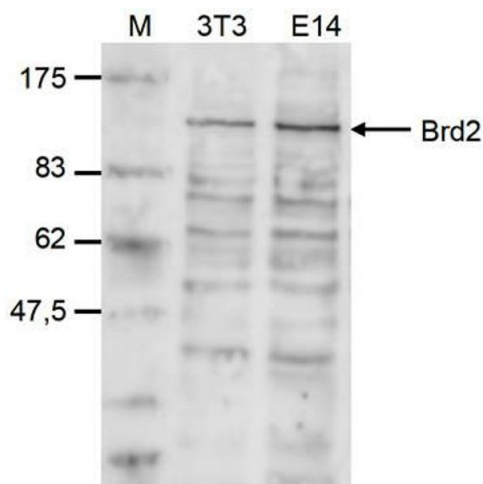
Format:	Liquid
Buffer:	0.01 % (w/v) Sodium Azide
	Stabilizer: None
Preservative:	Sodium azide
Precaution of Use:	This product contains Sodium azide: a POISONOUS AND HAZARDOUS SUBSTANCE which should be handled by trained staff only.
Storage:	RT, 4 °C, -20 °C
Storage Comment:	Store vial at -20° C prior to opening. Aliquot contents and freeze at -20° C or below for extended

storage. Avoid cycles of freezing and thawing. Centrifuge product if not completely clear after standing at room temperature. This product is stable for several weeks at 4° C as an undiluted liquid. Dilute only prior to immediate use.



ELISA

Image 1. ELISA of anti-Brd2 antibody ELISA results of Rabbit anti-Brd2 antibody. Antigen: BSA conjugated Brd2. Coating amount: 0.1 µg per well. Dilution series: serial dilution. Estimated Antibody Titer to be 1:5,000. Substrate: TMB .



Western Blotting

Image 2. Western Blot of anti-Brd2 antibody Western Blot results of Rabbit anti-Brd2 antibody. Lane 1: NIH3T3 whole cell lysates. Lane 2: embryonic stem cells E14Tg2a lysates. Load: 20 µg per lane. Primary antibody: Brd2 antibody at 1:1000 for overnight at 4°C. Secondary antibody: goat anti-rabbit HRP secondary antibody at 1:10,000 for 45 min at RT. Block: 5% BLOTTO/PBS-Tween overnight at 4°C. Predicted: 88 kDa.