

Datasheet for ABIN6657778
anti-CD25 antibody (PE)



[Go to Product page](#)

2 Images

Overview

Quantity:	100 µg
Target:	CD25 (IL2RA)
Reactivity:	Mouse
Host:	Rat
Clonality:	Monoclonal
Conjugate:	This CD25 antibody is conjugated to PE
Application:	Flow Cytometry (FACS), Fluorescence Microscopy (FM)

Product Details

Purpose:	CD25 Phycoerythrin Antibody
Immunogen:	Anti-CD25 Antibody (Monoclonal) was produced by repeated immunizations with IL-2-dependent cytolytic mouse T-cell clone B6.1.
Clone:	PC61
Isotype:	IgG1 lambda
Cross-Reactivity (Details):	Reactivity is observed against mouse CD25.
Purification:	Phycoerythrin conjugated CD25 Monoclonal Antibody was Protein G Purified and is directed against mouse CD25.
Sterility:	Sterile filtered
Labeling Ratio:	1-2

Target Details

Target:	CD25 (IL2RA)
Alternative Name:	CD25 (IL2RA Products)
Background:	<p>Synonyms: Interleukin-2 receptor subunit alpha, IL-2 receptor subunit alpha, IL-2-RA, IL-2R subunit alpha, IL2-RA, TAC antigen, p55, CD25 Antibody</p> <p>Background: The PC61.5 antibody is specific for mouse CD25, a 55 kDa surface protein also known as the Interleukin-2 Receptor alpha chain, or IL-2R alpha. CD25 may bind IL-2 by itself, although with low affinity and without induction of cell signaling. CD25 is also expressed within a high-affinity complex, along with the IL-2R beta chain (CD122) and the common gamma chain (CD132), to form a signaling receptor complex. Expression of CD25 varies during developmental stages of T and B cells, is induced on activated mature T and B cells, and is present on subsets of dendritic cells. CD25 signaling as part of the IL-2 receptor complex triggers T cell activation and proliferation, as well as modulating the differentiation and function of Th17 cells, T regulatory (Treg) cells, and dendritic cells. The PC61.5 antibody is used as a marker for T cells, B cells and dendritic cell subsets. Expression of CD25, CD4 and the transcription factor Foxp3 is regarded as a phenotypic signature for Treg cells. As such, this antibody is widely used for depletion of Treg cells in vivo, as well as to distinguish Treg cells from naive or conventional T cells which are CD25.</p> <p>Gene Name: IL2RA</p>
Gene ID:	16184
NCBI Accession:	NP_032393
UniProt:	P01590
Pathways:	JAK-STAT Signaling , Growth Factor Binding , Activated T Cell Proliferation

Application Details

Application Notes:	Flow_Cytometry_Dilution: 0.2-1 µg/1x10 ⁶ cells IF_Microscopy_Dilution: User Optimized
Comment:	Anti-CD25 is tested for FLOW and useful for IF. Researchers should determine optimal titers for applications that are not stated.
Restrictions:	For Research Use only

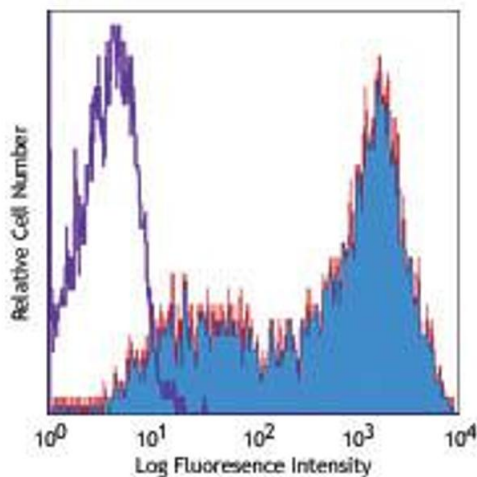
Handling

Format:	Liquid
---------	--------

Handling

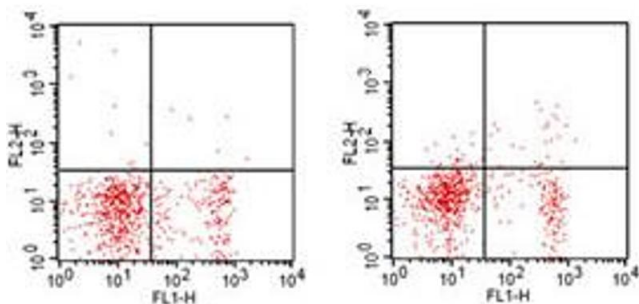
Buffer:	Buffer: 0.02 M Potassium Phosphate, 0.15 M Sodium Chloride, pH 7.2 Stabilizer: 0.1 % Gelatin Preservative: 0.09 % (w/v) Sodium Azide
Preservative:	Sodium azide
Precaution of Use:	This product contains Sodium azide: a POISONOUS AND HAZARDOUS SUBSTANCE which should be handled by trained staff only.
Storage:	4 °C
Storage Comment:	Store vial at 4° C prior to opening. Dilute only prior to immediate use. This product is stable at 4° C as an undiluted liquid. Use subdued lighting during handling and incubation of cells prior to analysis. Store reagent in the dark. DO NOT FREEZE.
Expiry Date:	6 months

Images



Flow Cytometry

Image 1. Flow Cytometry - Rat anti-MOUSE CD25 PE Flow Cytometry of Rat anti-MOUSE CD25 antibody Phycoerythrin conjugated. Cells: BALB/c mouse splenocytes. Stimulation: Con A-stimulated (3 days). Antibody: (PURPLE) rat PE isotype control antibody; (RED) Phycoerythrin Anti-CD25 rat secondary antibody using 1 µg.



Flow Cytometry

Image 2. Flow Cytometry - Rat anti-MOUSE CD25 PE Flow Cytometry of Rat anti-MOUSE CD25 antibody Phycoerythrin conjugated. Cells: BALB/c mouse splenocytes. Stimulation: none. Antibody: (left) isotype control antibody; (right) Phycoerythrin Anti-CD25 rat secondary antibody using 1 µg. Also stained with Fluorescein Anti-CD4 Antibody.