

Datasheet for ABIN6657785

anti-WNV M antibody

2 Images



[Go to Product page](#)

Overview

Quantity:	100 µg
Target:	WNV M
Reactivity:	Mouse
Host:	Rabbit
Clonality:	Polyclonal
Conjugate:	This WNV M antibody is un-conjugated
Application:	Immunohistochemistry (IHC), Western Blotting (WB), Fluorescence Microscopy (FM)

Product Details

Immunogen:	Immunogen: WNV M Antibody was produced from whole rabbit serum prepared by repeated immunizations with an internal sequence of WNV M protein. Immunogen Type: Peptide
Isotype:	IgG
Purification:	Anti-WNV M Antibody was purified by Protein G chromatography. A BLAST analysis was used to suggest cross-reactivity with Anti-WNV M from multiple species based on 100% homology with the immunizing sequence. Cross-reactivity with Anti-WNV M from other sources has not been determined.

Target Details

Target:	WNV M
Alternative Name:	WNV M (WNV M Products)

Target Details

Target Type:	Viral Protein
Background:	<p>Synonyms: West Nile Virus glycoprotein M</p> <p>Background: West Nile (WN), the most widespread among flaviviruses, was first isolated from the serum of a febrile woman in 1937 in the West Nile district of Uganda. West Nile virus was first detected in North America in 1999 and has subsequently spread throughout the United States and Canada and into Mexico and the Caribbean. In Africa, southern Europe, western Asia, and the United States, WNV has been isolated from mosquitoes of more than 40 species. In the United States, Canada, and Israel, WNV is responsible for significant avian mortality. Anti-WNV Antibody is ideal for investigators involved in Neurobiology research and infectious disease research.</p>
NCBI Accession:	NP_776013

Application Details

Application Notes:	<p>Immunohistochemistry Dilution: 1.0 µg/mL</p> <p>Application Note: Anti-West Nile (WN) glycoprotein M Antibody is suitable for use in IF/ICC, IHC (p), IP and WB. Expect a band approximately 8 kDa on specific lysates. Specific conditions for reactivity should be optimized by the end user.</p> <p>Western Blot Dilution: 0.5-2 µg/mL</p> <p>IF Microscopy Dilution: 1-2 µg/mL</p>
--------------------	---

Restrictions:	For Research Use only
---------------	-----------------------

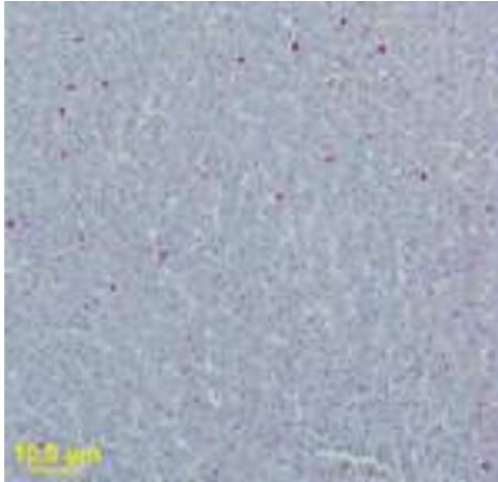
Handling

Format:	Liquid
Buffer:	<p>Buffer: 0.02 M Potassium Phosphate, 0.15 M Sodium Chloride, pH 7.2</p> <p>Stabilizer: 0.05 % BSA</p> <p>0.05 % (w/v) Sodium Azide</p>
Preservative:	Sodium azide
Precaution of Use:	This product contains Sodium azide: a POISONOUS AND HAZARDOUS SUBSTANCE which should be handled by trained staff only.
Storage:	RT, 4 °C, -20 °C
Storage Comment:	Store vial at -20° C prior to opening. Aliquot contents and freeze at -20° C or below for extended storage. Avoid cycles of freezing and thawing. Centrifuge product if not completely clear after

Handling

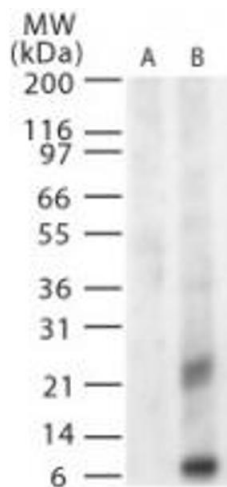
standing at room temperature. This product is stable for several weeks at 4° C as an undiluted liquid. Dilute only prior to immediate use.

Images



Immunohistochemistry

Image 1. WNVM Immunohistochemistry. Immunohistochemistry of Rabbit Anti-WNVM antibody. Tissue: bird liver. Fixation: formalin fixed paraffin embedded. Antigen retrieval: VEntana Protease 2 for 3 minutes at room temperature with Parafilm coverslip. Primary antibody: WNVM antibody at 1 µg/mL incubated for 30 minutes. Secondary antibody: Ventana brand second step antibody conjugated to biotin was applied followed with streptavidin-AKP with a Fast Red chromagen substrate. Staining: WNVM is stained purple.



Western Blotting

Image 2. WNVM Western Blot. Western Blot of Rabbit Anti-WNVM antibody. Lane A: untransfected mouse melanoma cells. Lane B: transfected mouse melanoma cells. Primary antibody: WNVM at 1 µg/mL for overnight at 4°C. Secondary antibody: rabbit secondary antibody at 1:10,000 for 45 min at RT. Block: 5% BLOTTO overnight at 4°C. Predicted/Observed size: 80 kDa for WNVM. Other band(s): none.