

Datasheet for ABIN6657812

anti-SETD1A antibody (Internal Region, N-Term)[Go to Product page](#)**2** Images

Overview

Quantity:	100 µL
Target:	SETD1A
Binding Specificity:	Internal Region, N-Term
Reactivity:	Mouse
Host:	Rabbit
Clonality:	Polyclonal
Conjugate:	This SETD1A antibody is un-conjugated
Application:	ELISA, Western Blotting (WB)

Product Details

Immunogen:	Immunogen: Anti-Setd1a Antibody was produced in rabbits by repeated immunizations with three different synthetic peptides of mouse Setd1a: two containing an amino acid sequence from the N-terminal region of the protein and one containing an amino acid sequence from the internal region of the protein. Immunogen Type: Peptide
Cross-Reactivity (Details):	Cross reactivity with Setd1a from other species not tested.
Purification:	Anti-Setd1a Antibody is monospecific antiserum processed by delipidation and defibrination followed by sterile filtration.

Target Details

Target:	SETD1A
---------	--------

Target Details

Alternative Name:	Setd1a (SETD1A Products)
Background:	<p>Synonyms: Histone-lysine N-methyltransferase SETD1A, Lysine N-methyltransferase 2F, SET domain-containing protein 1A, hSET1A, Set1/Ash2 histone methyltransferase complex subunit SET1</p> <p>Background: SETD1A is a component of the SET1 histone methyltransferase (HMT) complex. This complex specifically methylates lysine 4 of histone H3, but only if the neighboring lysine 9 residue is not yet methylated. Methylation of H3K4 represents a specific tag for epigenetic transcriptional activation. SETD1A shows a non-overlapping localization with SETD1B, suggesting that both proteins play a specific role in the epigenetic control of chromatin structure and gene expression. Anti-Setd1a Antibody is ideal for research in Epigenetics and Gene Expression.</p> <p>Gene Name: SETD1A</p>
Gene ID:	9739
NCBI Accession:	NP_055527
UniProt:	O15047

Application Details

Application Notes:	<p>Application Note: Anti-Setd1a Antibody is suitable for ELISA and Western Blots. Specific conditions for reactivity should be optimized by the end user. Expect a band approximately 186 kDa in the appropriate cell lysate or extract.</p> <p>ELISA Dilution: 1:100</p> <p>Western Blot Dilution: 1:500</p>
Restrictions:	For Research Use only

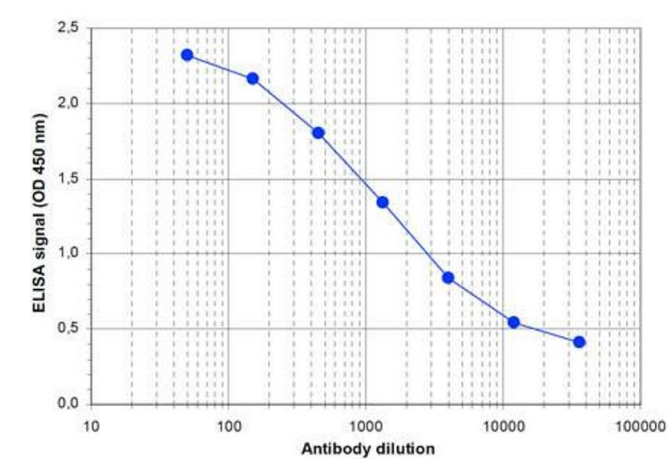
Handling

Format:	Liquid
Buffer:	0.01 % (w/v) Sodium Azide
	Stabilizer: None
Preservative:	Sodium azide
Precaution of Use:	This product contains Sodium azide: a POISONOUS AND HAZARDOUS SUBSTANCE which should be handled by trained staff only.
Storage:	RT, 4 °C, -20 °C

Handling

Storage Comment: Store vial at -20° C prior to opening. Aliquot contents and freeze at -20° C or below for extended storage. Avoid cycles of freezing and thawing. Centrifuge product if not completely clear after standing at room temperature. This product is stable for several weeks at 4° C as an undiluted liquid. Dilute only prior to immediate use.

Images



ELISA

Image 1. ELISA of anti-Setd1a antibody ELISA results of Rabbit anti-Setd1a antibody. Antigen: BSA conjugated Setd1a. Coating amount: 0.1 µg per well. Dilution series: serial dilution. Estimated Antibody Titer to be 1:2,500. Substrate: TMB .



Western Blotting

Image 2. Western Blot of anti-Setd1a antibody Western Blot results of Rabbit anti-Setd1a antibody. Lane 1: NIH3T3 cell lysates. Lane 2: embryonic stem cell E14Tg2a lysates. Load: 40 µg per lane. Primary antibody: Setd1a antibody at 1:500 for overnight at 4°C. Secondary antibody: goat anti-rabbit HRP secondary antibody at 1:10,000 for 45 min at RT. Block: BSA/PBS-Tween overnight at 4°C. Predicted: 186kDa.