

Datasheet for ABIN6657851
anti-CD11b antibody (APC)



[Go to Product page](#)

2 Images

Overview

Quantity:	100 µg
Target:	CD11b (ITGAM)
Reactivity:	Mouse
Host:	Rat
Clonality:	Monoclonal
Conjugate:	This CD11b antibody is conjugated to APC
Application:	Flow Cytometry (FACS), Immunohistochemistry (IHC), Immunoprecipitation (IP)

Product Details

Purpose:	CD11b Allophycocyanin Antibody
Immunogen:	Anti-CD11b Antibody (Monoclonal) was produced by repeated immunizations with CD11b antigen.
Clone:	M1-70
Isotype:	IgG2b kappa
Cross-Reactivity (Details):	Cross reactive to Human, Chimpanzee, Baboon, Cynomolgus, and Rhesus.
Purification:	Allophycocyanin conjugated CD11b Monoclonal Antibody was purified from tissue culture supernatant via affinity chromatography and is directed against mouse CD11b.
Sterility:	Sterile filtered
Labeling Ratio:	1-2

Target Details

Target:	CD11b (ITGAM)
Alternative Name:	CD11b (ITGAM Products)
Background:	<p>Synonyms: CD11b</p> <p>Background: CD11b antibody reacts with human and mouse CD11b, also known as integrin alpha M. This 165-170 kDa cell surface glycoprotein is part of a family of integrin receptors that mediate adhesion between cells (cell-cell) and components of the extracellular matrix, e.g. fibrinogen (cell-matrix). In addition, integrins are active signaling receptors which recruit leukocytes to inflammatory sites and promote cell activation. Complete, functional integrin receptors consist of distinct combinations of integrin chains which are differentially expressed. Integrin alpha M (CD11b) assembles with Integrin beta-2 (CD18) into a receptor known as Macrophage Antigen-1 (Mac-1) or complement receptor type 3 (CR3). This receptor binds and induces intracellular signaling through ICAM-1 on endothelial cells and can also facilitate removal of iC3b bearing foreign cells. The M1/70 antibody is widely used as a marker for CD11b expression on mouse macrophages, granulocytes, neutrophils, and NK cells.</p> <p>Gene Name: Itgam</p>
UniProt:	A1E2I0
Pathways:	Apoptosis , Activation of Innate immune Response , Toll-Like Receptors Cascades , Activated T Cell Proliferation

Application Details

Application Notes:	<p>Immunoprecipitation_Dilution: User Optimized</p> <p>Immunohistochemistry_Dilution: User Optimized</p> <p>Flow_Cytometry_Dilution: 10 µL/10⁶ cells (0.1 µg)</p>
Comment:	Anti-CD11b is tested for FLOW and useful for Immunoprecipitation and Immunohistochemistry using mouse spleen cells, or an appropriate cell type (where indicated). Researchers should determine optimal titers for applications that are not stated
Restrictions:	For Research Use only

Handling

Format:	Liquid
Buffer:	Buffer: 0.01 M Sodium Phosphate, 0.15 M Sodium Chloride, pH 7.2
	Stabilizer: 0.1 % Gelatin

Handling

Preservative: 0.09 % (w/v) Sodium Azide

Preservative: Sodium azide

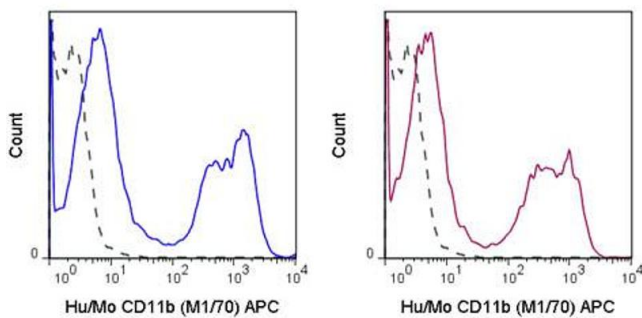
Precaution of Use: This product contains Sodium azide: a POISONOUS AND HAZARDOUS SUBSTANCE which should be handled by trained staff only.

Storage: 4 °C

Storage Comment: Store vial at 4° C prior to opening. Dilute only prior to immediate use. This product is stable at 4° C as an undiluted liquid. Use subdued lighting during handling and incubation of cells prior to analysis. Store reagent in the dark. DO NOT FREEZE.

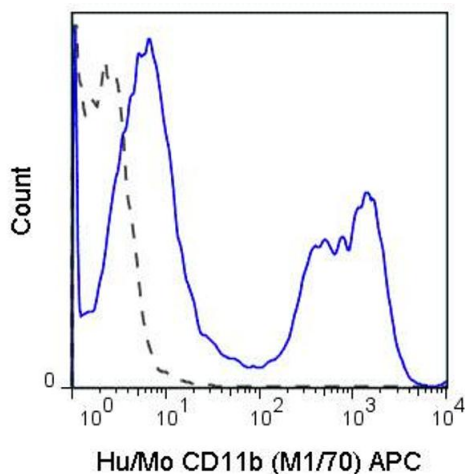
Expiry Date: 6 months

Images



Flow Cytometry

Image 1. Flow Cytometry of anti-CD11b APC - 200-526-N79 Flow Cytometry of anti-CD11b Allophycocyanin Conjugated Monoclonal Antibody. Cells: C57Bl/6 bone marrow cells. Stimulation: none. Antibody: (Dotted Line) APC Mouse IgG1 isotype control; (Blue Line) Allophycocyanin Anti-CD11b antibody; (Red Line) Allophycocyanin Anti-CD11b antibody using 0.125 ug.



Flow Cytometry

Image 2. Flow Cytometry of anti-CD11b APC - 200-526-N79 Flow Cytometry of anti-CD11b Allophycocyanin Conjugated Monoclonal Antibody. Cells: Human peripheral blood lymphocytes. Stimulation: none. Antibody: (Dotted Line) APC Mouse IgG1 isotype control; (Solid Line) Allophycocyanin Anti-CD11b antibody using 0.125 ug.