

Datasheet for ABIN6657860  
**anti-CD45 antibody (FITC)**



[Go to Product page](#)

2 Images

## Overview

Quantity:	500 µg
Target:	CD45 (PTPRC)
Reactivity:	Mouse
Host:	Rat
Clonality:	Monoclonal
Conjugate:	This CD45 antibody is conjugated to FITC
Application:	Flow Cytometry (FACS), Immunohistochemistry (IHC), Western Blotting (WB), Immunoprecipitation (IP), Fluorescence Microscopy (FM)

## Product Details

Purpose:	CD45 Fluorescein Antibody
Immunogen:	Anti-CD45 Antibody (Monoclonal) was produced by repeated immunizations with CD45 antigen.
Clone:	30-F11
Isotype:	IgG2b kappa
Cross-Reactivity (Details):	Cross reactivity with CD45 from other sources has not been tested.
Purification:	Fluorescein conjugated CD45 Monoclonal Antibody was purified from tissue culture supernatant via affinity chromatography and is directed against mouse CD45.
Sterility:	Sterile filtered
Labeling Ratio:	2-8

## Target Details

---

Target:	CD45 (PTPRC)
Alternative Name:	CD45 ( <a href="#">PTPRC Products</a> )
Background:	<p>Synonyms: Receptor-type tyrosine-protein phosphatase C, , ukocyte common antigen, L-CA, Lymphocyte antigen 5, Ly-5, T200, CD45, Ptprc, Ly-5</p> <p>Background: The 30-F11 antibody reacts with mouse CD45, which is one of the most abundant hematopoietic markers and is expressed on all leukocytes (the Leukocyte Common Antigen, LCA). CD45 is a protein tyrosine phosphatase existing in several isoforms, each being generated and expressed in cell-specific patterns. With its broad cell distribution, CD45 is critical for many leukocyte functions, regulating signal transduction and cell activation associated with the T cell receptor, B cell receptor, and IL-2 receptor. Other forms of CD45, with restricted cellular expression, include CD45R (B220), CD45RA, CD45RB, CD45RO and others. The 30-F11 antibody is widely used as a leukocyte marker for B cells, T cell subsets and NK cell subsets.</p> <p>Gene Name: Ptprc</p>
UniProt:	<a href="#">P06800</a>
Pathways:	<a href="#">TCR Signaling</a> , <a href="#">Regulation of Leukocyte Mediated Immunity</a> , <a href="#">Positive Regulation of Immune Effector Process</a> , <a href="#">Production of Molecular Mediator of Immune Response</a> , <a href="#">CXCR4-mediated Signaling Events</a> , <a href="#">BCR Signaling</a>

## Application Details

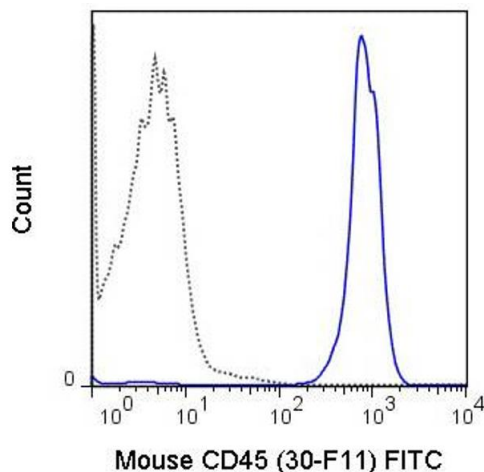
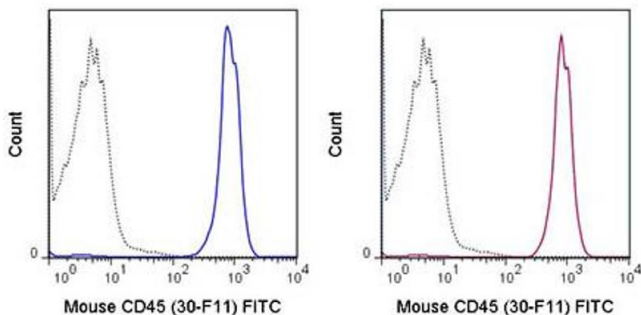
---

Application Notes:	<p>Immunoprecipitation_Dilution: User Optimized</p> <p>Immunohistochemistry_Dilution: User Optimized</p> <p>Flow_Cytometry_Dilution: 10 µL/10<sup>6</sup> cells (0.1 µg)</p> <p>IF_Microscopy_Dilution: User Optimized</p> <p>Western_Blot_Dilution: User Optimized</p> <p>Other: Sufficient to run approximately 500 tests</p>
Comment:	<p>Anti-CD45 is tested for Flow Cytometry and useful for Immunoprecipitation, Immunohistochemistry, Immunofluorescence, and Western Blot using mouse spleen cells, or an appropriate cell type (where indicated). Researchers should determine optimal titers for applications that are not stated.</p>
Restrictions:	For Research Use only

## Handling

Format:	Liquid
Buffer:	Buffer: 0.01 M Sodium Phosphate, 0.15 M Sodium Chloride, pH 7.2 Stabilizer: 0.1 % Gelatin Preservative: 0.09 % (w/v) Sodium Azide
Preservative:	Sodium azide
Precaution of Use:	This product contains Sodium azide: a POISONOUS AND HAZARDOUS SUBSTANCE which should be handled by trained staff only.
Storage:	4 °C
Storage Comment:	Store vial at 4° C prior to opening. This product is stable for several weeks at 4° C as an undiluted liquid. Dilute only prior to immediate use. DO NOT FREEZE. This product is light sensitive.
Expiry Date:	6 months

## Images



### Flow Cytometry

**Image 1.** Flow Cytometry of anti-CD45 FITC - 200-502-N83 Flow Cytometry of anti-CD45 Fluorescein Conjugated Monoclonal Antibody. Cells: C57Bl/6 splenocytes. Stimulation: None. Antibody: (dashed line) 0.5 ug FITC Rat IgG2b isotype control; (solid line) Fluorescein Anti-CD45 antibody 0.5 ug ( Antibody left panel).

### Flow Cytometry

**Image 2.** Flow Cytometry of anti-CD45 FITC - 200-502-N83 Flow Cytometry of anti-CD45 Fluorescein Conjugated Monoclonal Antibody. Cells: C57Bl/6 splenocytes. Stimulation: None. Antibody: Fluorescein Anti-CD45 antibody 0.5 ug (solid line) or 0.5 ug FITC Rat IgG2b isotype control (dashed line).