



[Go to Product page](#)

Datasheet for ABIN6657890

anti-CD207 antibody

2 Images

Overview

Quantity:	100 µg
Target:	CD207
Reactivity:	Mouse
Host:	Rabbit
Clonality:	Polyclonal
Conjugate:	This CD207 antibody is un-conjugated
Application:	Western Blotting (WB), Immunohistochemistry (IHC)

Product Details

Immunogen:	Immunogen: Langerin Antibody was produced from whole rabbit serum prepared by repeated immunizations with mouse Langerin protein at an internal amino acid sequence. Immunogen Type: Peptide
Isotype:	IgG
Purification:	Anti-Langerin Antibody was purified by Protein G chromatography. A BLAST analysis was used to suggest cross-reactivity with Anti-Langerin from mouse based on 100% homology with the immunizing sequence. Cross-reactivity with Anti-Langerin from other sources has not been determined.

Target Details

Target:	CD207
Alternative Name:	Langerin (CD207 Products)

Target Details

Background: Synonyms: Clec4k, C-type lectin domain family 4 member K, Langerin, CD207

Background: Anti-Langerin Antibody detects mouse Langerin. Langerin (CD207) is a type II membrane-associated C-type lectin known to be expressed exclusively by Langerhans cells. Langerin (CD207) recognizes mannose residues via its single carbohydrate recognition domain (CRD). Langerin (CD207) is localized not only on the cell surface, but also intracellularly in close association with Birbeck granules. Transfection of Langerin cDNA into fibroblasts creates a compact network of membrane structures with typical features of Birbeck granules (BG). Langerin (CD207) is thus a potent inducer of membrane superimposition and zippering leading to BG formation. Anti-Langerin Antibody is ideal for investigators involved in Toll Like Receptors, signaling, and extracellular matrix research.

Gene Name: Cd207

Gene ID: 246278

NCBI Accession: [NP_659192](#)

UniProt: [Q8VBX4](#)

Application Details

Application Notes: Immunohistochemistry Dilution: 5 µg/mL (paraffin)

Application Note: Anti-Langerin Antibody is suitable for use in CM, IHC (frozen) and WB. Expect a band approximately 36 kDa on specific lysates. Specific conditions for reactivity should be optimized by the end user.

Western Blot Dilution: 1-3 µg/mL

Restrictions: For Research Use only

Handling

Format: Liquid

Buffer: 0.02 M Potassium Phosphate, 0.15 M Sodium Chloride, pH 7.20.02 % (w/v) Sodium Azide

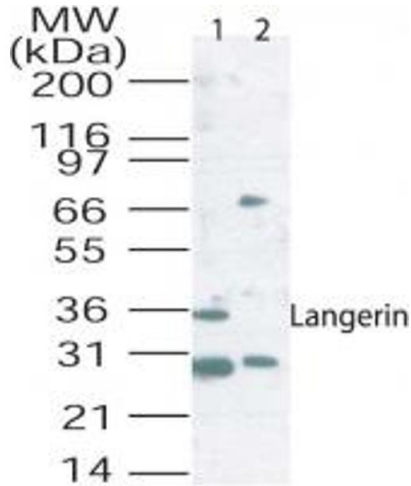
Preservative: Sodium azide

Precaution of Use: This product contains Sodium azide: a POISONOUS AND HAZARDOUS SUBSTANCE which should be handled by trained staff only.

Storage: RT, 4 °C, -20 °C

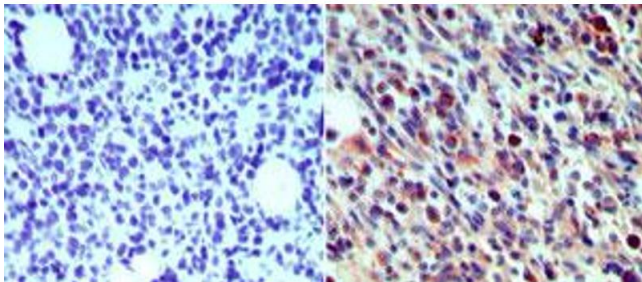
Storage Comment: Store vial at -20° C prior to opening. Aliquot contents and freeze at -20° C or below for extended storage. Avoid cycles of freezing and thawing. Centrifuge product if not completely clear after

standing at room temperature. This product is stable for several weeks at 4° C as an undiluted liquid. Dilute only prior to immediate use.



Western Blotting

Image 1. Langerin Western Blot. Western Blot of Rabbit Anti-Langerin antibody. Lane 1: mouse lung tissue lysate without blocking peptide. Lane 2: mouse lung tissue lysate with blocking peptide. Primary antibody: Langerin at 2 µg/mL for overnight at 4°C. Secondary antibody: rabbit secondary antibody at 1:10,000 for 45 min at RT. Block: 5% BLOTTO overnight at 4°C. Predicted/Observed size: 80 kDa for Langerin. Other band(s): none.



Immunohistochemistry

Image 2. Langerin Immunohistochemistry. Immunohistochemistry of Rabbit Anti-Langerin antibody. Tissue: mouse breast. Fixation: formalin fixed paraffin embedded. Antigen retrieval: not required. Primary antibody: Langerin antibody at 5 µg/mL for 1 h at RT. Secondary antibody: Peroxidase rabbit secondary antibody at 1:10,000 for 45 min at RT. Staining: Isotype control is on left and Langerin as precipitated red signal with hematoxylin purple nuclear counterstain.