

Datasheet for ABIN6657896
anti-CD45 antibody (FITC)



[Go to Product page](#)

2 Images

Overview

Quantity:	500 µg
Target:	CD45 (PTPRC)
Reactivity:	Mouse
Host:	Mouse
Clonality:	Monoclonal
Conjugate:	This CD45 antibody is conjugated to FITC
Application:	Flow Cytometry (FACS), Immunohistochemistry (IHC), Immunoprecipitation (IP)

Product Details

Purpose:	CD45.1 Fluorescein Antibody
Immunogen:	Anti-CD45.1 Antibody (Monoclonal) was produced by repeated immunizations with CD45.1 antigen.
Clone:	A20
Isotype:	IgG2a kappa
Purification:	Fluorescein conjugated CD45.1 Monoclonal Antibody was purified from tissue culture supernatant via affinity chromatography and is directed against mouse CD45.
Sterility:	Sterile filtered
Labeling Ratio:	2-8

Target Details

Target:	CD45 (PTPRC)
Alternative Name:	Ptprc (PTPRC Products)
Background:	<p>Synonyms: Receptor-type tyrosine-protein phosphatase C, , ukocyte common antigen, L-CA, Lymphocyte antigen 5, Ly-5, T200, CD45, Ptprc, Ly-5</p> <p>Background: The A20 antibody reacts with mouse CD45.1, also known as Ly5.1, which is a strain-specific allelic form of the CD45 Leukocyte Common Antigen (LCA). Functionally, CD45 is a protein tyrosine phosphatase whose broad cell distribution supports a critical role in many leukocyte functions, including regulation of signal transduction and cell activation associated with the T cell and B cell receptors. The A20 antibody is typically used as a leukocyte marker in Ly5.1 mouse strains: SJL/J, DA, STS/A and RIII. The antibody has been demonstrated to be specific for CD45.1 and is not cross-reactive with CD45.2 bearing cells.</p> <p>Gene Name: Ptprc</p>
UniProt:	P06800
Pathways:	TCR Signaling , Regulation of Leukocyte Mediated Immunity , Positive Regulation of Immune Effector Process , Production of Molecular Mediator of Immune Response , CXCR4-mediated Signaling Events , BCR Signaling

Application Details

Application Notes:	<p>Immunoprecipitation_Dilution: User Optimized</p> <p>Immunohistochemistry_Dilution: User Optimized</p> <p>Flow_Cytometry_Dilution: 10 μL/10⁶ cells (0.1 μg)</p> <p>Other: Sufficient to run approximately 500 tests</p>
Comment:	<p>Anti-CD45.1 is tested for Flow Cytometry and useful for Immunoprecipitation, and Immunohistochemistry using mouse spleen cells, or an appropriate cell type (where indicated). Researchers should determine optimal titers for applications that are not stated.</p>
Restrictions:	For Research Use only

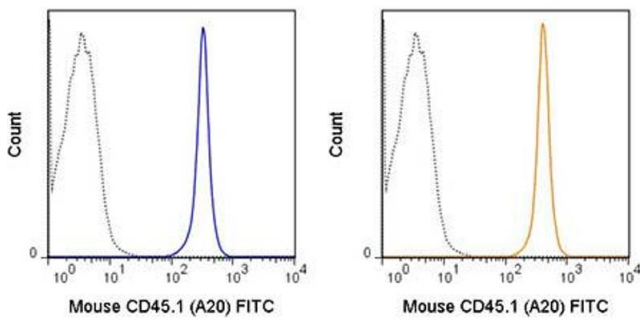
Handling

Format:	Liquid
Buffer:	<p>Buffer: 0.01 M Sodium Phosphate, 0.15 M Sodium Chloride, pH 7.2</p> <p>Stabilizer: 0.1 % Gelatin</p> <p>Preservative: 0.09 % (w/v) Sodium Azide</p>

Handling

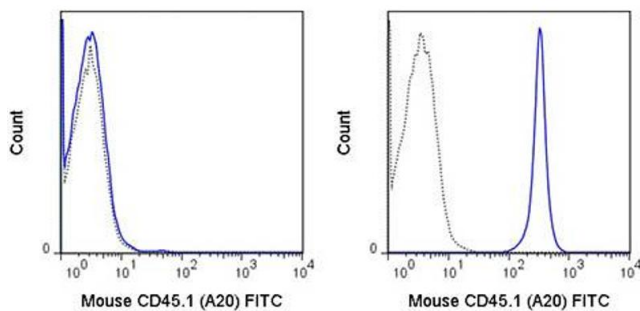
Preservative:	Sodium azide
Precaution of Use:	This product contains Sodium azide: a POISONOUS AND HAZARDOUS SUBSTANCE which should be handled by trained staff only.
Storage:	4 °C
Storage Comment:	Store vial at 4° C prior to opening. This product is stable for several weeks at 4° C as an undiluted liquid. Dilute only prior to immediate use. DO NOT FREEZE. This product is light sensitive.
Expiry Date:	6 months

Images



Flow Cytometry

Image 1. Flow Cytometry of anti-CD45.1 FITC - 200-502-N85 Flow Cytometry of anti-CD45.1 Fluorescein Conjugated Monoclonal Antibody. Cells: SJL splenocytes. Stimulation: None. Antibody: (Dotted line) 0.125 ug FITC Mouse IgG2a isotype control; (Blue line) 0.125 ug Fluorescein Anti-CD45.1; (Yellow line) FITC Anti-CD45.1 control.



Flow Cytometry

Image 2. Flow Cytometry of anti-CD45.1 FITC - 200-502-N85 Flow Cytometry of anti-CD45.1 Fluorescein Conjugated Monoclonal Antibody. Cells: C57Bl/6 splenocytes (left panel) or SJL splenocytes (right panel). Stimulation: None. Antibody: 0.125 ug Fluorescein Anti-CD45.1 (solid line) or 0.125 ug FITC Mouse IgG2a isotype control (dashed line).