

Datasheet for ABIN6657901
anti-CD4 antibody (FITC)



[Go to Product page](#)

2 Images

Overview

Quantity:	500 µg
Target:	CD4
Reactivity:	Mouse
Host:	Rat
Clonality:	Monoclonal
Conjugate:	This CD4 antibody is conjugated to FITC
Application:	Flow Cytometry (FACS), Fluorescence Microscopy (FM)

Product Details

Purpose:	CD4 Fluorescein Antibody
Immunogen:	Anti-CD4 Antibody (Monoclonal) was produced by repeated immunizations with Mouse CTL clone V4.
Clone:	GK1-5
Isotype:	IgG2b kappa
Cross-Reactivity (Details):	Reactivity is observed against mouse CD4.
Purification:	Fluorescein conjugated CD4 Monoclonal Antibody was Protein G Purified and is directed against mouse CD4.
Sterility:	Sterile filtered
Labeling Ratio:	2-8

Target Details

Target:	CD4
Alternative Name:	CD4 (CD4 Products)
Background:	<p>Synonyms: T-cell surface glycoprotein CD4, T-cell surface antigen T4/Leu-3, CD4 Antibody, L3T4, T4</p> <p>Background: CD4 (cluster of differentiation 4) is a glycoprotein expressed on the surface of T helper cells, regulatory T cells, monocytes, macrophages, and dendritic cells. It is a member of the immunoglobulin superfamily. On T cells, it is the co-receptor for the T cell receptor (TCR) and amplifies the signal generated by the TCR by recruiting the tyrosine kinase lck that is essential for activating many molecules involved in the signaling cascade of an activated T cell. It is an important component of the immune system and is also the cellular receptor for HIV-1. It consists of a cytoplasmic tail, one transmembrane region, and four extracellular domains, D1-D4. It maps to 12pter-p12 region of human chromosome.</p> <p>Gene Name: CD4</p>
Gene ID:	12504
NCBI Accession:	NP_038516
UniProt:	P06332
Pathways:	TCR Signaling , Maintenance of Protein Location , CXCR4-mediated Signaling Events

Application Details

Application Notes:	<p>Flow_Cytometry_Dilution: 0.1-1 μg/10⁶ cells</p> <p>IF_Microscopy_Dilution: User Optimized</p> <p>Other: Sufficient to run approximately 500 tests</p>
Comment:	<p>Suggested Applications: Sufficient to run approximately 500 tests</p> <p>Anti-CD4 is tested in Flow Cytometry (Cell Surface) and useful for Immunofluorescence. Researchers should determine optimal titers for applications that are not stated.</p>
Restrictions:	For Research Use only

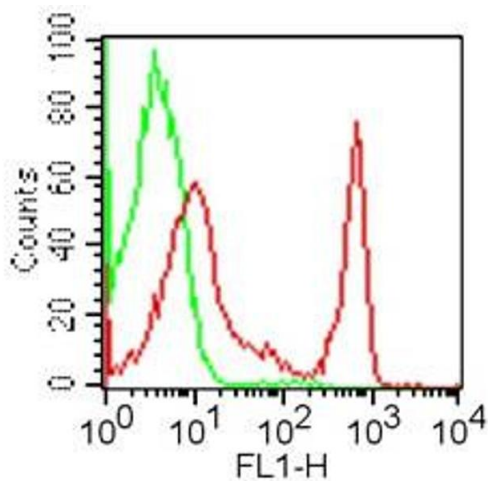
Handling

Format:	Liquid
Buffer:	<p>Buffer: 0.01 M Tris Cl, 0.15 M Sodium Chloride, pH 8.0</p> <p>Stabilizer: 0.05 % BSA</p> <p>Preservative: 0.05 % (w/v) Sodium Azide</p>

Handling

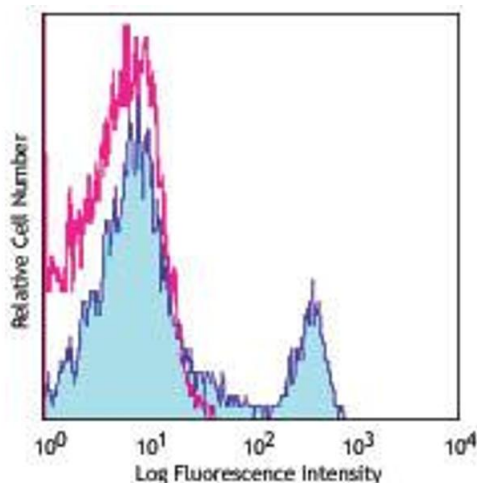
Preservative:	Sodium azide
Precaution of Use:	This product contains Sodium azide: a POISONOUS AND HAZARDOUS SUBSTANCE which should be handled by trained staff only.
Storage:	4 °C
Storage Comment:	Store vial at 4° C prior to opening. This product is stable for several weeks at 4° C as an undiluted liquid. Dilute only prior to immediate use. DO NOT FREEZE. This product is light sensitive.
Expiry Date:	6 months

Images



Flow Cytometry

Image 1. Flow Cytometry - Rat anti-MOUSE CD4 FITC Cell Surface Flow Cytometry of Rat anti-MOUSE CD4 antibody Fluorescein conjugated. Cells: 10^6 BALB/c mouse splenocytes. Stimulation: none. Antibody: (GREEN) isotype control antibody; (RED) Fluorescein Anti-CD4 rat secondary antibody using 1 μ g.



Flow Cytometry

Image 2. Flow Cytometry - Rat anti-MOUSE CD4 FITC Flow Cytometry of Rat anti-MOUSE CD4 antibody Fluorescein conjugated. Cells: 10^6 C57BL/6 mouse splenocytes. Stimulation: none. Antibody: (PINK) FITC rat IgG2b kappa isotype control antibody; (BLUE) Fluorescein Anti-CD4 rat secondary antibody using 1 μ g.