

Datasheet for ABIN6657904
anti-KDM5B antibody (Internal Region)



[Go to Product page](#)

2 Images

Overview

Quantity:	100 µL
Target:	KDM5B
Binding Specificity:	Internal Region
Reactivity:	Mouse
Host:	Rabbit
Clonality:	Polyclonal
Conjugate:	This KDM5B antibody is un-conjugated
Application:	Western Blotting (WB), ELISA

Product Details

Purpose:	Jarid1b Antibody
Immunogen:	Anti-Jarid1b Antibody was produced in rabbits by repeated immunizations with a synthetic peptide containing an amino acid sequence from the internal part of mouse Jarid1b.
Isotype:	IgG
Cross-Reactivity (Details):	Cross reactivity with Jarid1b from other species not tested.
Purification:	Anti-Jarid1b Antibody is monospecific antiserum processed by delipidation and defibrination followed by sterile filtration.
Sterility:	Sterile filtered

Target Details

Target:	KDM5B
Alternative Name:	Jarid1b (KDM5B Products)
Background:	<p>Synonyms: Lysine-specific demethylase 5B, Histone demethylase JARID1B, Jumonji/ARID domain-containing protein 1B, PLU-1</p> <p>Background: JARID1B is a histone demethylase which specifically demethylates mono-, di, and trimethylated lysine 4 of histone H3. It acts as a transcriptional repressor for the tumor suppressor genes BRCA1 and HOXA5 and has been associated with breast cancer development. In contrast, in melanoma JARID1B itself may function as a tumor suppressor. Anti-Jarid1b Antibody is ideal for research in Epigenetics, Chromatin Remodeling and Cancer.</p> <p>Gene Name: Kdm5b</p>
Gene ID:	10765
NCBI Accession:	NP_006609
UniProt:	Q80Y84
Pathways:	Warburg Effect

Application Details

Application Notes:	ELISA_Dilution: 1:100 - 1:200 Western_Blot_Dilution: 1:500
Comment:	Anti-Jarid1b Antibody has been tested by ELISA and Western Blots. Specific conditions for reactivity should be optimized by the end user. Expect a band approximately 175 kDa in the appropriate cell lysate or extract.
Restrictions:	For Research Use only

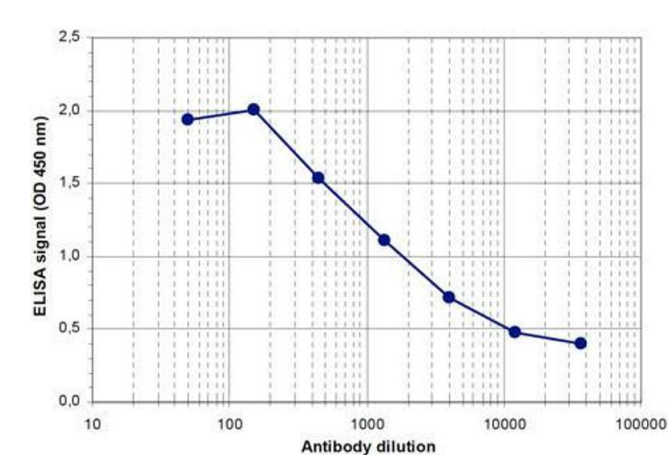
Handling

Format:	Liquid
Buffer:	Buffer: None Stabilizer: None Preservative: 0.05 % (w/v) Sodium Azide
Preservative:	Sodium azide
Precaution of Use:	This product contains Sodium azide: a POISONOUS AND HAZARDOUS SUBSTANCE which should be handled by trained staff only.

Handling

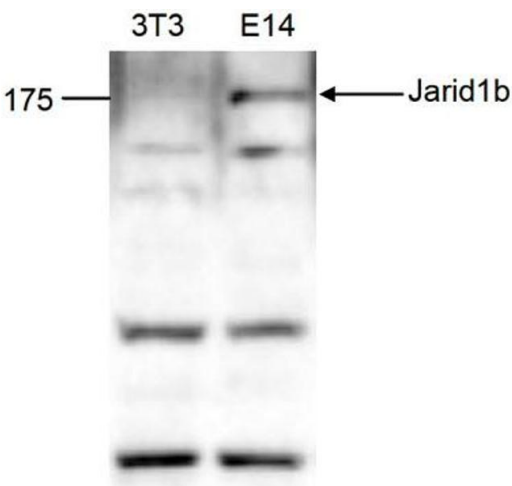
Storage:	4 °C,-20 °C
Storage Comment:	Store vial at -20° C prior to opening. Aliquot contents and freeze at -20° C or below for extended storage. Avoid cycles of freezing and thawing. Centrifuge product if not completely clear after standing at room temperature. This product is stable for several weeks at 4° C as an undiluted liquid. Dilute only prior to immediate use.
Expiry Date:	12 months

Images



ELISA

Image 1. ELISA of anti-Jarid1b antibody ELISA results of Rabbit anti-Jarid1b antibody. Antigen: BSA conjugated Jarid1b. Coating amount: 0.1 µg per well. Dilution series: serial dilution. Estimated Antibody Titer to be 1:2,200. Substrate: TMB .



Western Blotting

Image 2. Western Blot of anti-Jarid1b antibody Western Blot results of Rabbit anti-Jarid1b antibody. Lane 1: NIH3T3 cell lysates. Lane 2: embryonic stem cell E14Tg2a lysates. Load: 40 µg per lane. Primary antibody: Jarid1b antibody at 1:500 for overnight at 4°C. Secondary antibody: goat anti-rabbit HRP secondary antibody at 1:10,000 for 45 min at RT. Block: BSA/PBS-Tween overnight at 4°C. Predicted: 179kDa.