

Datasheet for ABIN6657905 **anti-TCRb antibody (APC)**



[Go to Product page](#)

1 Image

Overview

Quantity:	100 µg
Target:	TCRb
Reactivity:	Mouse
Host:	Hamster
Clonality:	Monoclonal
Conjugate:	This TCRb antibody is conjugated to APC
Application:	Flow Cytometry (FACS), Immunohistochemistry (IHC), Immunoprecipitation (IP)

Product Details

Purpose:	TCRbeta Allophycocyanin Antibody
Immunogen:	Anti-TCRbeta Antibody (Monoclonal) was produced by repeated immunizations with Affinity purified TCR from mouse DO-11.10 cells.
Clone:	H57-597
Isotype:	IgG
Cross-Reactivity (Details):	Cross reactivity with TCRbeta from other sources has not been tested.
Purification:	Allophycocyanin conjugated TCRbeta Monoclonal Antibody was purified from tissue culture supernatant via affinity chromatography and is directed against mouse TCRbeta.
Sterility:	Sterile filtered
Labeling Ratio:	1-2

Target Details

Target:	TCRb
Alternative Name:	Tcrb (TCRb Products)
Background:	<p>Synonyms: Tib, TCRbeta, T cell receptor beta chain, Tcrb</p> <p>Background: T cell receptor (TCR) is a heterodimer consisting of an α and a β chain (TCR α/β) or a γ and a δ chain (TCR γ/δ). TCR-β is a member of the immunoglobulin superfamily and a component of the CD3/TCR complex (along with TCR-α). It is expressed on α/β TCR-bearing T cells and thymocytes. The CD3/TCR complex plays a key role in antigen recognition, signal transduction, and T cell activation.</p> <p>Gene Name: Tcrb</p>
Gene ID:	21577

Application Details

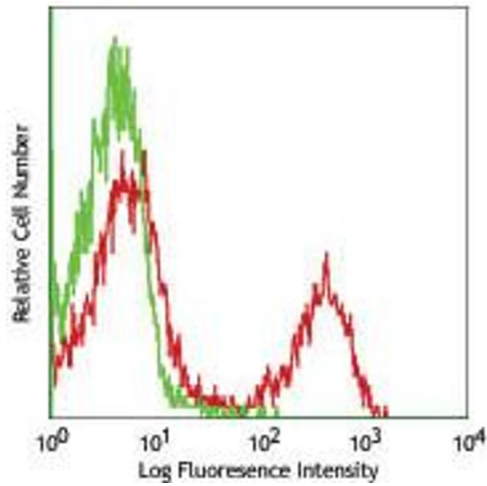
Application Notes:	<p>Immunoprecipitation_Dilution: User Optimized</p> <p>Immunohistochemistry_Dilution: User Optimized</p> <p>Flow_Cytometry_Dilution: 10 μL/10⁶ cells (0.1 μg)</p>
Comment:	<p>Anti-TCR beta is tested for FLOW and useful for Immunoprecipitation and Immunohistochemistry using mouse spleen cells, or an appropriate cell type (where indicated). Researchers should determine optimal titers for applications that are not stated.</p>
Restrictions:	For Research Use only

Handling

Format:	Liquid
Buffer:	<p>Buffer: 0.01 M Sodium Phosphate, 0.15 M Sodium Chloride, pH 7.2</p> <p>Stabilizer: None</p> <p>Preservative: 0.09 % (w/v) Sodium Azide</p>
Preservative:	Sodium azide
Precaution of Use:	This product contains Sodium azide: a POISONOUS AND HAZARDOUS SUBSTANCE which should be handled by trained staff only.
Storage:	4 °C
Storage Comment:	Store vial at 4° C prior to opening. Dilute only prior to immediate use. This product is stable at 4° C as an undiluted liquid. Use subdued lighting during handling and incubation of cells prior to

analysis. Store reagent in the dark. DO NOT FREEZE.

Expiry Date: 6 months



Flow Cytometry

Image 1. Flow Cytometry of anti-TCRbeta APC - 200-B26-N92 Flow Cytometry of anti-TCRbeta Allophycocyanin Conjugated Monoclonal Antibody. Cells: C57BL/6 mouse splenocytes. Stimulation: none. Antibody: (Green Line) APC Armenian Hamster IgG isotype control; (Red Line) Allophycocyanin Anti-TCRbeta antibody.