

Datasheet for ABIN6657906
anti-TCRb antibody (FITC)



[Go to Product page](#)

1 Image

Overview

Quantity:	500 µg
Target:	TCRb
Reactivity:	Mouse
Host:	Hamster
Clonality:	Monoclonal
Conjugate:	This TCRb antibody is conjugated to FITC
Application:	Flow Cytometry (FACS), Immunoprecipitation (IP), Fluorescence Microscopy (FM)

Product Details

Purpose:	TCRbeta Fluorescein Antibody
Immunogen:	Anti-TCRbeta Antibody (Monoclonal) was produced by repeated immunizations with TCRbeta antigen.
Clone:	H57-597
Isotype:	IgG
Cross-Reactivity (Details):	Cross reactivity with TCRbeta from other sources has not been tested.
Purification:	Fluorescein conjugated TCRbeta Monoclonal Antibody was purified from tissue culture supernatant via affinity chromatography and is directed against mouse TCRbeta.
Sterility:	Sterile filtered
Labeling Ratio:	2-8

Target Details

Target: TCRb

Alternative Name: Tcrb ([TCRb Products](#))

Background: Synonyms: Tib, TCRbeta, T cell receptor beta chain, Tcrb
Background: The H57-597 antibody is specific for the beta chain of the mouse T cell Receptor (TCR). This cell surface protein combines with a second protein chain (alpha chain) to form the alpha-beta TCR that is expressed by NK1.1+ thymocytes, NKT cells, and the majority of peripheral T cells. A small number of T cells may express an alternative heteromer of gamma and delta protein chains, known as the gamma-delta TCR. These receptors participate in a complex with CD3, and with the co-receptors CD4 or CD8, to recognize and respond to antigens bound to MHC molecules on antigen-presenting cells. Such interactions promote T cell receptor signaling (T cell activation) and can result in a number of cellular responses including proliferation, differentiation, production of cytokines or activation-induced cell death. The H57-597 antibody is used as a phenotypic marker for T cells expressing the alpha-beta TCR. It is also widely used to cross-link surface TCR and thereby mimic TCR-mediated cell activation or induction of apoptosis. The antibody does not cross-react with cells expressing the gamma-delta TCR.
Gene Name: Tcrb

Gene ID: 21577

Application Details

Application Notes: Immunoprecipitation_Dilution: User Optimized
Flow_Cytometry_Dilution: 10 μ L/10⁶ cells (0.1 μ g)
IF_Microscopy_Dilution: User Optimized
Other: Sufficient to run approximately 500 tests

Comment: Anti-TCR beta is tested for FLOW and useful for Immunofluorescence and Immunoprecipitation using mouse spleen cells, or an appropriate cell type (where indicated). Researchers should determine optimal titers for applications that are not stated.

Restrictions: For Research Use only

Handling

Format: Liquid

Buffer: 0.01 M Sodium Phosphate, 0.15 M Sodium Chloride, pH 7.2
Stabilizer: 0.1 % Gelatin

Handling

Preservative: 0.09 % (w/v) Sodium Azide

Preservative: Sodium azide

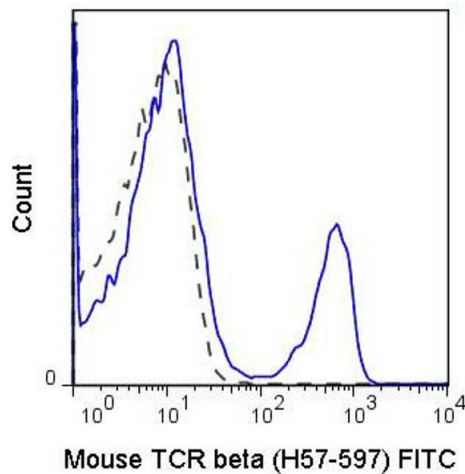
Precaution of Use: This product contains Sodium azide: a POISONOUS AND HAZARDOUS SUBSTANCE which should be handled by trained staff only.

Storage: 4 °C

Storage Comment: Store vial at 4° C prior to opening. This product is stable for several weeks at 4° C as an undiluted liquid. Dilute only prior to immediate use. DO NOT FREEZE. This product is light sensitive.

Expiry Date: 6 months

Images



Flow Cytometry

Image 1. Flow Cytometry of anti-TCRbeta FITC - 200-B02-N92 Flow Cytometry of anti-TCRbeta Fluorescein Conjugated Monoclonal Antibody. Cells: C57BL/6 splenocytes. Stimulation: none. Antibody: (Black Line) FITC Armenian Hamster IgG isotype control; (Blue Line) Fluorescein Anti-TCRbeta antibody.