

Datasheet for ABIN6658054

anti-MBP antibody

2 Images



[Go to Product page](#)

Overview

Quantity:	100 µL
Target:	MBP
Reactivity:	Rat
Host:	Chicken
Clonality:	Polyclonal
Conjugate:	This MBP antibody is un-conjugated
Application:	Western Blotting (WB), Immunofluorescence (IF), Fluorescence Microscopy (FM)

Product Details

Purpose:	Myelin Basic Protein (MBP) Antibody
Immunogen:	Anti-Myelin basic protein Antibody was produced in chicken by repeated immunizations with three peptide sequences conserved in higher vertebrate MBP proteins.
Isotype:	IgG
Cross-Reactivity (Details):	Anti-MBP antibody is directed against Myelin basic protein.
Purification:	The antibody is a total IgY fraction.

Target Details

Target:	MBP
Abstract:	MBP Products
Background:	Synonyms: Myelin A1 protein, Myelin membrane encephalitogenic protein, Myelin basic protein,

Target Details

MBP, Myelin basic protein S, MBP S antibody

Background: Myelin Basic Protein antibody detects MBP. MBP is one of the major proteins of the myelin sheath surrounding axons in the nervous system. Since it is of relatively low molecular weight and high abundance the protein sequence was determined from purified protein over 30 years ago. The protein is made by oligodendrocytes in the central nervous system, so antibodies to MBP are good markers of this cell type. However, transcripts from the same gene are also expressed in certain hematopoietic lineage cells. In the central nervous system there are there different forms of the protein made by alternate transcription from a single gene, which have molecular weights of 21.5, 18.5, and 17.2 kDa. Since the two lower molecular weight forms are very close in molecular size, MBP antibodies typically show two bands on Western blots, one at about 22 kDa and another at about 18 kDa. Anti-MBP antibody is ideal for investigators involved in Cell Signaling, Neuroscience, and Signal Transduction research.

Gene Name: MDV1

Gene ID: 24547

NCBI Accession: [NP_001020465](#)

UniProt: [P02688](#)

Application Details

Application Notes: IF_Microscopy_Dilution: 1:500
Western_Blot_Dilution: 1:5000

Comment: Anti-Myelin Basic Protein antibody is tested for use in Western Blotting and IF. Expect a bands of approximately 18 kDa and 22 kDa in size corresponding to MBP proteins in Western blots of rat brain homogenate. Specific conditions for reactivity should be optimized by the end user.

Restrictions: For Research Use only

Handling

Format: Liquid

Buffer: Optional[Buffer]: 0.02 M Potassium Phosphate, 0.15 M Sodium Chloride, pH 7.2 ,0.01 % (w/v) Sodium Azide

Preservative: Sodium azide

Precaution of Use: This product contains Sodium azide: a POISONOUS AND HAZARDOUS SUBSTANCE which

Handling

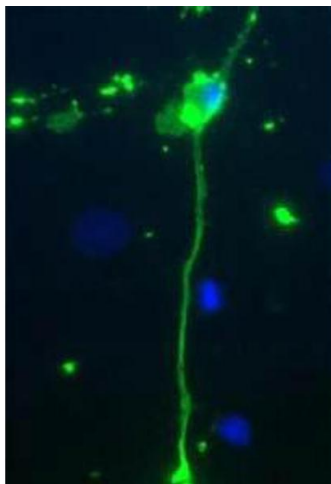
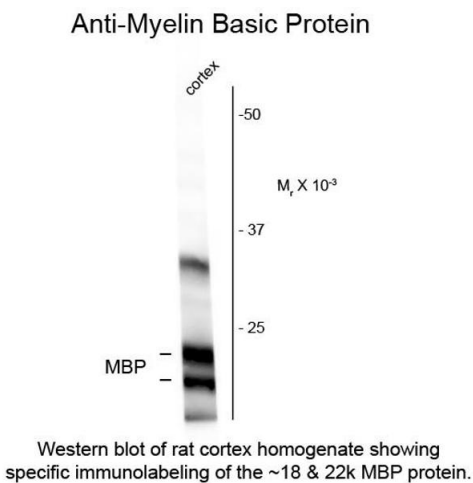
should be handled by trained staff only.

Storage: 4 °C,-20 °C

Storage Comment: Store vial at -20° C prior to opening. This product is stable at 4° C as an undiluted liquid. For extended storage, aliquot contents and freeze at -20° C or below. Avoid cycles of freezing and thawing. Dilute only prior to immediate use.

Expiry Date: 12 months

Images



Western Blotting

Image 1. Western blot of Anti-Myelin Basic Protein (MBP) (Chicken) Antibody - 200-901-D81 Western Blot of Anti-Myelin Basic Protein (MBP) (Chicken) Antibody. Lane 1: rat cortex homogenate. Lane 2: none. Load: 10 µg per lane. Primary antibody: MBP antibody at 1:400 for overnight at 4°C. Secondary antibody: chicken secondary antibody at 1:10,000 for 45 min at RT. Block: 5% BLOTTO overnight at 4°C. Predicted/Observed size: ~ 18kDa and 22kDa MBP protein. Other band(s): none.

Immunofluorescence

Image 2. Immunofluorescence - MBP Antibody Immunofluorescence Microscopy of Chicken Anti-Myelin Basic Protein (MBP) Antibody. Tissue: Rat mixed neuron/glia cultures. Fixation: 0.5% PFA. Antigen retrieval: not required. Primary antibody: MBP antibody at 10 µg/mL for 1 h at RT. Secondary antibody: Fluorescein chicken secondary antibody at 1:10,000 for 45 min at RT. Localization: MBP is cytoplasmic. Staining: chicken anti-Myelin Basic Protein (green). Blue is a DNA stain. Note that the Myelin Basic Protein antibody stains an oligodendrocyte and some membrane shed from this cell. Other cells in the field include neurons, astrocytes, microglia and fibroblasts, all of which are completely negative.