

Datasheet for ABIN6658281
anti-Synaptophysin 2 antibody (C-Term)



[Go to Product page](#)

1 Image

Overview

Quantity:	100 µL
Target:	Synaptophysin 2
Binding Specificity:	C-Term
Reactivity:	Rat
Host:	Rabbit
Clonality:	Polyclonal
Conjugate:	This Synaptophysin 2 antibody is un-conjugated
Application:	Western Blotting (WB)

Product Details

Immunogen:	Immunogen: Anti-Synaptophysin 2 Antibody was produced in rabbit by repeated immunizations with synthetic peptide corresponding to amino acid residues from the C-terminal region of synaptophysin 2. Immunogen Type: Peptide
Isotype:	IgG
Purification:	Anti-Synaptophysin 2 antibody is directed against synaptophysin 2 or synaptoporin. Synaptophysin 2 antibody was affinity purified from monospecific antiserum by immunoaffinity purification. This antibody is directed against rat synaptophysin 2 protein. Reactivity is expected from the following species based on 100% sequence homology: mouse.

Target Details

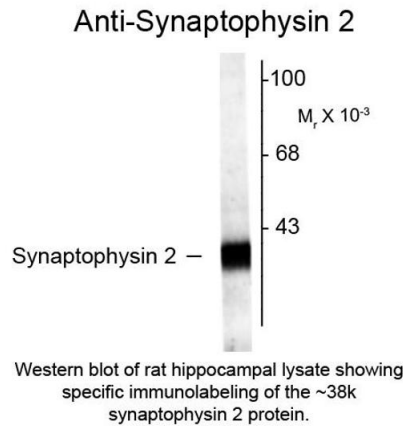
Target:	Synaptophysin 2
Abstract:	Synaptophysin 2 Products
Background:	<p>Synonyms: Synaptoporin Antibody, Synpr, rabbit polyclonal anti-synaptophysin, synaptophysin antibodies</p> <p>Background: Synaptophysin 2 antibody detects Synaptophysin 2, also known as Synaptoporin, which is a component of the synaptic vesicle membrane and thought to play an important role in synaptic vesicle trafficking. It is highly homologous to Synaptophysin 1, yet differs in expression. Whereas Synaptophysin 1 is ubiquitously expressed, Synaptophysin 2 is concentrated in the mossy fiber synapses of the hippocampus.</p> <p>Gene Name: SYNPR</p>
Gene ID:	66030
UniProt:	P07825

Application Details

Application Notes:	<p>Application Note: Anti-Synaptophysin 2 (Rabbit) antibody is suitable for use in Western Blotting. Specific conditions for reactivity should be optimized by the end user. Expect a band of approximately 38 kDa in size corresponding to the synaptoporin protein in the appropriate cell lysate or extract. Researchers should determine optimal titers for applications that are not stated below.</p> <p>Western Blot Dilution: 1:1000</p>
Restrictions:	For Research Use only

Handling

Format:	Liquid
Buffer:	<p>Buffer: 0.01 M HEPES, 0.15 M Sodium Chloride, pH 7.5</p> <p>Stabilizer: 0.1 mg/mL Bovine Serum Albumin (BSA) - IgG and Protease free, 50 % (v/v) Glycerol</p>
Storage:	4 °C, -20 °C
Storage Comment:	Store vial at -20° C prior to opening. This product is stable at 4° C as an undiluted liquid. For extended storage, aliquot contents and freeze at -20° C or below. Avoid cycles of freezing and thawing. Dilute only prior to immediate use.



Western Blotting

Image 1. Western blot of Anti-Synaptophysin 2 (Rabbit) Antibody - 612-401-E36 Western Blot of Rabbit anti-Synaptophysin 2 antibody. Lane 1: rat hippocampal lysate. Lane 2: none. Load: 10 µg per lane. Primary antibody: Synaptophysin 2 antibody at 1:1,000 for overnight at 4°C. Secondary antibody: rabbit secondary antibody at 1:10,000 for 45 min at RT. Block: 5% BLOTTO overnight at 4°C. Predicted/Observed size: 38 kDa for Synaptophysin 2. Other band(s): none.