

Datasheet for ABIN666620

PSMA3 Protein (AA 1-255) (His tag)[Go to Product page](#)**1** Image

Overview

Quantity:	100 µg
Target:	PSMA3
Protein Characteristics:	AA 1-255
Origin:	Human
Source:	Escherichia coli (E. coli)
Protein Type:	Recombinant
Purification tag / Conjugate:	This PSMA3 protein is labelled with His tag.
Application:	SDS-PAGE (SDS)

Product Details

Characteristics:	PSMA3, 1-255 aa, Human, His tag E.coli
Purity:	> 95 % by SDS - PAGE

Target Details

Target:	PSMA3
Alternative Name:	PSMA3 (PSMA3 Products)

Background: The proteasome is a multicatalytic proteinase complex with a highly ordered ring-shaped 20S core structure. The core structure is composed of 4 rings of 28 non-identical subunits, 2 rings are composed of 7 alpha subunits and 2 rings are composed of 7 beta subunits. Proteasomes are distributed throughout eukaryotic cells at a high concentration and cleave peptides in an ATP/ubiquitin-dependent process in a non-lysosomal pathway. This gene encodes a member of

Target Details

the peptidase T1A family that is a 20S core alpha subunit. Two alternative transcripts encoding different isoforms have been identified. Recombinant human PSMA3 protein, fused to His-tag at N-terminus, was expressed in E.coli and purified by using conventional chromatography techniques. Synonyms: Proteasome (prosome, macropain) subunit, alpha type 3, HC8, MGC12306, MGC32631, PSC3. NCBI no.: NP_002779

Molecular Weight: 30.6 kDa (275aa), confirmed by MALDI-TOF

Pathways: [Mitotic G1-G1/S Phases](#), [DNA Replication](#), [Synthesis of DNA](#)

Application Details

Restrictions: For Research Use only

Handling

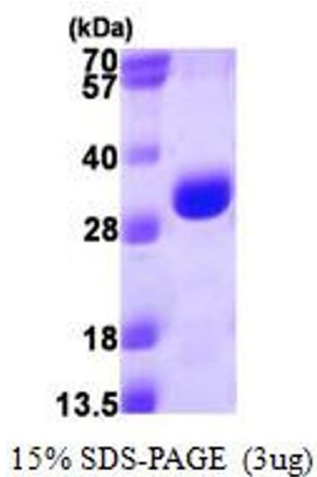
Format: Liquid

Concentration: 1 mg/ml (determined by Bradford)

Buffer: Liquid. In 20mM Tris-HCl buffer(pH 8.0) containing 10% glycerol, 1mM DTT, 0.15M NaCl.

Storage: 4 °C

Images



SDS-PAGE

Image 1.