

Datasheet for ABIN666622

PSMB6 Protein (AA 35-239) (His tag)[Go to Product page](#)**1** Image

Overview

Quantity:	50 µg
Target:	PSMB6
Protein Characteristics:	AA 35-239
Origin:	Human
Source:	Escherichia coli (E. coli)
Protein Type:	Recombinant
Purification tag / Conjugate:	This PSMB6 protein is labelled with His tag.
Application:	SDS-PAGE (SDS)

Product Details

Characteristics:	PSMB6, 35-239 aa , Human, His tag E.coli
Purity:	> 85 % by SDS - PAGE

Target Details

Target:	PSMB6
Alternative Name:	PSMB6 (PSMB6 Products)
Background:	PSMB6 is a member of the proteasome B-type family, also known as the T1B family, that is a 20S core beta subunit in the proteasome. This catalytic subunit is not present in the immunoproteasome and is replaced by PSMB9. The proteasome is a multicatalytic proteinase complex with a highly ordered ring-shaped 20S core structure. The core structure is composed of 4 rings of 28 non-identical subunits, 2 rings are composed of 7 alpha subunits and 2 rings

Target Details

are composed of 7 beta subunits. Recombinant human PSMB6 protein, fused to His-tag at N-terminus, was expressed in E.coli and purified by using conventional chromatography techniques. Synonyms: Proteasome subunit beta type-6 precursor, DELTA, LMPY, MGC5169. NCBI no.: NP_002789

Molecular Weight: 24.2 kDa (226aa), confirmed by MALDI-TOF

Pathways: [Mitotic G1-G1/S Phases](#), [DNA Replication](#), [Synthesis of DNA](#)

Application Details

Restrictions: For Research Use only

Handling

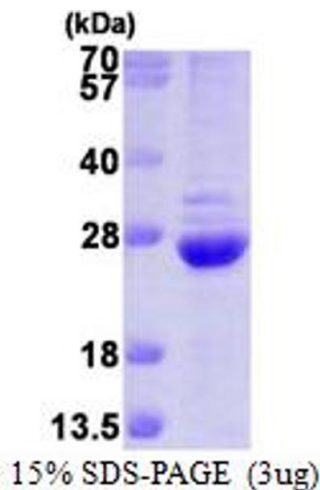
Format: Liquid

Concentration: 1 mg/ml (determined by Bradford)

Buffer: Liquid. In 20mM Tris-HCl buffer(pH 8.0) containing 10% glycerol, 1mM DTT, 0.15M NaCl.

Storage: 4 °C

Images



SDS-PAGE

Image 1.