

Datasheet for ABIN666632

UBE2N Protein (AA 1-152) (His tag)[Go to Product page](#)**1** Image

Overview

Quantity:	100 µg
Target:	UBE2N
Protein Characteristics:	AA 1-152
Origin:	Human
Source:	Escherichia coli (E. coli)
Protein Type:	Recombinant
Purification tag / Conjugate:	This UBE2N protein is labelled with His tag.
Application:	SDS-PAGE (SDS)

Product Details

Characteristics:	UBE2N, 1-152aa, Human, His tag, E.coli
Purity:	> 95 % by SDS - PAGE

Target Details

Target:	UBE2N
Alternative Name:	UBE2N (UBE2N Products)
Background:	UBE2N, also known as UBC13, is a member of the E2 ubiquitin-conjugating enzyme family. It catalyzes the ATP-dependent synthesis of non-canonical polyubiquitin chains, a process that does not lead to proteasomal degradation. It mediates the transcription of several target genes and is thought to play a role in cell cycle progression, cellular differentiation and DNA repair mechanisms that ensure cell survival after DNA damage. Recombinant human UBE2N protein,

Target Details

	fused to His-tag at N-terminus, was expressed in E.coli and purified by using conventional chromatography. Synonyms: Ubiquitin-conjugating enzyme E2 N, MGC131857, MGC8489, UBC13, UbcH-ben. NCBI no.: NP_003339
Molecular Weight:	19.3 kDa(172aa), confirmed by MALDI-TOF
Pathways:	TCR Signaling , Fc-epsilon Receptor Signaling Pathway , Activation of Innate immune Response , Toll-Like Receptors Cascades , Positive Regulation of Response to DNA Damage Stimulus , Ubiquitin Proteasome Pathway

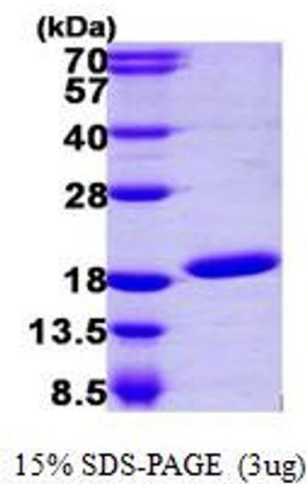
Application Details

Restrictions:	For Research Use only
---------------	-----------------------

Handling

Format:	Liquid
Concentration:	0.5 mg/ml (determined by Bradford assay)
Buffer:	Liquid. 20mM Tris-HCl buffer (pH8.0) containing 20% glycerol, Q10010.1M NaCl,1mM DTT
Storage:	4 °C

Images



SDS-PAGE

Image 1.