

Datasheet for ABIN666634

**AES Protein (AA 1-197) (His tag)**[Go to Product page](#)**1** Image

## Overview

Quantity:	50 µg
Target:	AES
Protein Characteristics:	AA 1-197
Origin:	Human
Source:	Escherichia coli (E. coli)
Protein Type:	Recombinant
Purification tag / Conjugate:	This AES protein is labelled with His tag.
Application:	SDS-PAGE (SDS)

## Product Details

Characteristics:	AES, 1-197aa, Human, His tag, E.coli
Purity:	> 95 % by SDS - PAGE

## Target Details

Target:	AES
Alternative Name:	AES ( <a href="#">AES Products</a> )
Background:	Amino-terminal enhancer of split, also known AES, belongs to the groucho/TLE family of proteins, can function as a homooligomer or as a heterooligomer with other family members to dominantly repress the expression of other family member genes. This protein is expressed predominately in fetal brain, liver, lung, heart and kidney and in adult muscle. In addition, AES can repress NFκB-regulated gene expression and is thought to play an important role in

## Target Details

initiating and maintaining cell differentiation events. Recombinant human AES protein, fused to His-tag at N-terminus, was expressed in E.coli and purified by using conventional chromatography techniques. Synonyms: Amino-terminal enhancer of split, AES-1, AES-2, ESP1, GRG, GRG5, TLE5, Groucho homologue. NCBI no.: NP\_001121

Molecular Weight: 24.1 kDa (217aa) confirmed by MALDI-TOF

Pathways: [WNT Signaling](#), [SARS-CoV-2 Protein Interactome](#)

## Application Details

Restrictions: For Research Use only

## Handling

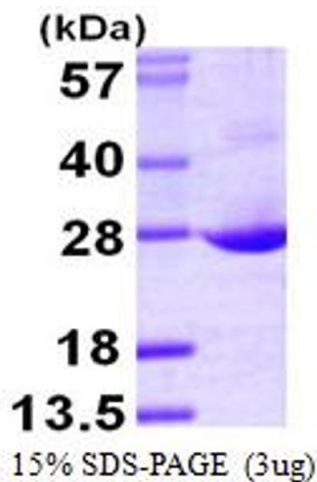
Format: Liquid

Concentration: 1 mg/ml (determined by Bradford assay)

Buffer: Liquid. In 20mM Tris-HCl buffer (pH 8.0) containing 1mM DTT, 20% glycerol

Storage: 4 °C

## Images



### SDS-PAGE

Image 1.