

Datasheet for ABIN666646

CCL3L1 Protein (AA 26-93) (His tag)[Go to Product page](#)**1** Image

Overview

Quantity:	100 µg
Target:	CCL3L1
Protein Characteristics:	AA 26-93
Origin:	Human
Source:	Escherichia coli (E. coli)
Protein Type:	Recombinant
Purification tag / Conjugate:	This CCL3L1 protein is labelled with His tag.
Application:	SDS-PAGE (SDS)

Product Details

Characteristics:	CCL3L1, 26-93aa, Human, His tag, E.coli
Purity:	> 90 % by SDS - PAGE

Target Details

Target:	CCL3L1
Alternative Name:	CCL3L1 (CCL3L1 Products)
Background:	CCL3L1 is a small cytokine belonging to the CC chemokine. This protein is involved in immunoregulatory and inflammatory processes. It binds to several chemokine receptors including chemokine binding protein 2 (CCBP2 or D6) and chemokine (C-C motif) receptor 5 (CCR5). Recombinant human CCL3L1 protein, fused to His-tag at N-terminus, was expressed in E.coli and purified by conventional chromatography, after refolding of the isolated inclusion

Target Details

	bodies in a renaturation buffer. Synonyms: C-C motif chemokine 3-like 1, CCL3L3, D17S1718, G0S19-2, LD78, LD78BETA, MIP1AP, SCYA3L, SCYA3L1. NCBI no.: NP_066286
Molecular Weight:	10.0 kDa (90aa), confirmed by MALDI-TOF
Pathways:	Cellular Response to Molecule of Bacterial Origin

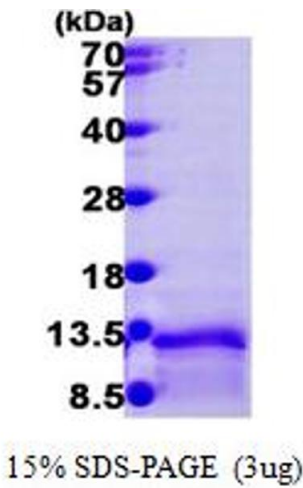
Application Details

Restrictions:	For Research Use only
---------------	-----------------------

Handling

Format:	Liquid
Concentration:	0.25 mg/ml (determined by Bradford assay)
Buffer:	Liquid. In Phosphate Buffered Saline pH7.4 containing 10% glycerol
Storage:	4 °C

Images



SDS-PAGE

Image 1.