

Datasheet for ABIN666649

PTTG1 Protein (AA 1-202) (His tag)[Go to Product page](#)**1** Image

Overview

Quantity:	100 µg
Target:	PTTG1
Protein Characteristics:	AA 1-202
Origin:	Human
Source:	Escherichia coli (E. coli)
Protein Type:	Recombinant
Purification tag / Conjugate:	This PTTG1 protein is labelled with His tag.
Application:	SDS-PAGE (SDS)

Product Details

Characteristics:	PTTG1, 1-202 aa, Human, His-tagged, Recombinant, E.coli
Purity:	> 80 % by SDS - PAGE

Target Details

Target:	PTTG1
Alternative Name:	PTTG1 (PTTG1 Products)
Background:	PTTG1, also known as Securin, is primarily involved in the regulation of sister chromatid separation during cell division. It has two identified roles, the first one is to help the transport of separase(cysteine protease) to the nucleus and the second role is to inhibit the catalytic activity of separase. It is ubiquitinated by the Anaphase Promoting Complex (APC), and then degraded by the Proteasome, releasing separase. Recombinant PTTG1 protein was expressed in E.coli

Target Details

and purified by using conventional chromatography techniques. Synonyms: EAP1, HPTTG, PTTG, TUTR1, SECURIN, Pituitary tumor-transforming protein 1 ESP1 ASSOCIATED PROTEIN 1, Esp1-associated protein, MGC126883, MGC138276, Pds1, PTTG1 protein, PTTG1, Pituitary tumor transforming 1, PTTG 1, EAP 1, Cut2, Pituitary tumor transforming protein 1, AW555095, Pituitary tumor-transforming 1, isoform CRA_a, Pituitary tumor-transforming 1, isoform CRA_b, hPTTG, Pituitary tumor-transforming gene 1, TUTR 1, Pttg3, Pituitary tumor-transforming gene 1 protein, C87862, TUMOR TRANSFORMING 1, Tumor transforming protein 1,. NCBI no.: NP_004210

Molecular Weight: 24.1 kDa (222aa), confirmed by MALDI-TOF.

Application Details

Restrictions: For Research Use only

Handling

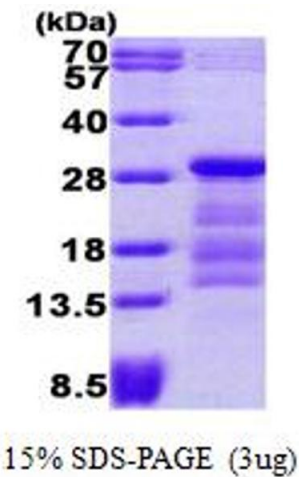
Format: Liquid

Concentration: 1 mg/ml (determined by Bradford assay)

Buffer: Liquid. In 20mM Tris-HCl buffer (pH8.0) containing 0.1 M NaCl, 10% glycerol

Storage: 4 °C

Images



SDS-PAGE

Image 1.