

Datasheet for ABIN666650

PAGR1 Protein (AA 1-254) (His tag)[Go to Product page](#)**1** Image

Overview

Quantity:	100 µg
Target:	PAGR1
Protein Characteristics:	AA 1-254
Origin:	Human
Source:	Escherichia coli (E. coli)
Protein Type:	Recombinant
Purification tag / Conjugate:	This PAGR1 protein is labelled with His tag.
Application:	SDS-PAGE (SDS)

Product Details

Characteristics:	PA1, 1-254aa, Human, His tag, E.coli
Purity:	> 85 % by SDS - PAGE

Target Details

Target:	PAGR1
Alternative Name:	PA1 (PAGR1 Products)
Background:	PA1 is a component of a Set1-like multiprotein histone methyltransferase complex. It interacts with PAXIP1/PTIP, the interaction is direct and is required for the association with the rest of the PTIP complex. This protein plays a critical role in maintaining genome stability, condensation of chromatin and progression through mitosis. Recombinant human PA1 protein, fused to His-tag at N-terminus, was expressed in E.coli and purified by using conventional

Target Details

chromatography techniques. Synonyms: PAXIP1-associated protein 1., FLJ22459, GAS, MGC4606, C16orf53. NCBI no.: NP_078792

Molecular Weight: 29.9 kDa (274aa), confirmed by MALDI-TOF (Molecular weight on SDS-PAGE will appear higher)

Application Details

Restrictions: For Research Use only

Handling

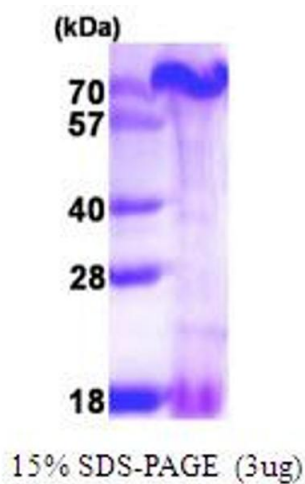
Format: Liquid

Concentration: 1 mg/ml (determined by Bradford assay)

Buffer: Liquid. In 20mM Tris-HCl buffer(pH 8.0) containing 10% glycerol, 2mM DTT, 0.1M NaCl.

Storage: 4 °C

Images



SDS-PAGE

Image 1.