



[Go to Product page](#)

Datasheet for ABIN666654

M-CSF/CSF1 Protein (AA 33-190) (His tag)

1 Image

Overview

Quantity:	100 µg
Target:	M-CSF/CSF1 (CSF1)
Protein Characteristics:	AA 33-190
Origin:	Human
Source:	Escherichia coli (E. coli)
Protein Type:	Recombinant
Purification tag / Conjugate:	This M-CSF/CSF1 protein is labelled with His tag.
Application:	SDS-PAGE (SDS)

Product Details

Characteristics:	MCSF, 33-190 aa, Human, His-tagged, E.coli
Purity:	> 90 % by SDS - PAGE

Target Details

Target:	M-CSF/CSF1 (CSF1)
Alternative Name:	MCSF (CSF1 Products)
Background:	Macrophage colony stimulating factor (M-CSF), as known as CSF-1, one of the hematopoietic growth factors that regulate the growth and differentiation of blood cells. This protein is produced by monocytes, granulocytes, endothelial cells, and fibroblasts. It stimulates the formation of macrophage colonies, enhances antibody-dependent, cell-mediated cytotoxicity by monocytes and macrophages, and inhibits bone resorption by osteoclasts. Recombinant

Target Details

human M-CSF, fused to His-tag at N-terminus, was expressed as insoluble protein aggregate in E.coli and purified by conventional chromatography, after refolding of the isolated inclusion bodies in a renaturation buffer. . Synonyms: CSF1 , Macrophage colony stimulating factor Colony stimulating factor 1, CSF 1, Lanimostim, M CSF, Macrophage Colony Stimulating Factor 1, MCSF, MGC31930. NCBI no.: NP_757351

Molecular Weight: 20.7 kDa (179aa), confirmed by MALDI-TOF.

Pathways: [RTK Signaling](#)

Application Details

Restrictions: For Research Use only

Handling

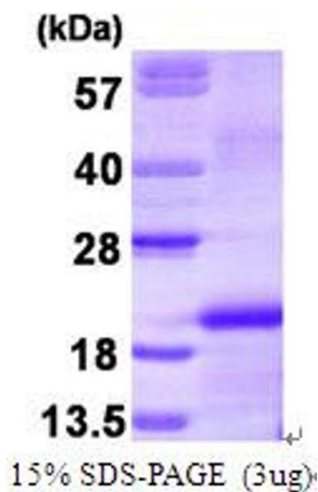
Format: Liquid

Concentration: 1 mg/ml (determined by Bradford assay)

Buffer: Liquid. In 20 mM Tris-HCl buffer (pH8.0), 2mM DTT, 10% glycerol

Storage: 4 °C

Images



SDS-PAGE

Image 1.