



[Go to Product page](#)

Datasheet for ABIN666659

CX3CL1 Protein (AA 25-100) (His tag)

1 Image

Overview

Quantity:	100 µg
Target:	CX3CL1
Protein Characteristics:	AA 25-100
Origin:	Human
Source:	Escherichia coli (E. coli)
Protein Type:	Recombinant
Purification tag / Conjugate:	This CX3CL1 protein is labelled with His tag.
Application:	SDS-PAGE (SDS)

Product Details

Characteristics:	CX3CL1/Fractalkine, 25- 100 aa, Human, His-tagged, Recombinant, E.coli
Purity:	> 90 % by SDS - PAGE

Target Details

Target:	CX3CL1
Alternative Name:	CX3CL1/Fractalkine (CX3CL1 Products)
Background:	CX3CL1, also known as fractalkine. CX3CL1 has a unique CX3C cysteine motif near the amino terminus and is the first member of a fourth branch of the chemokine superfamily. Unlike other known chemokines, CX3CL1 is a type 1 membrane protein containing a chemokine domain tethered on a long mucin like stalk. It is expressed in a membrane-bound form on activated endothelial cells and mediates attachment and firm adhesion of T cells, monocytes and NK

Target Details

cells. Also, CX3CL1 elicits its adhesive and migratory functions by interacting with the chemokine receptor CX3CR1. Recombinant human CX3CL1, fused to His-tag at N-terminus, was expressed in E.coli and purified by using conventional chromatography techniques. Synonyms: ABCD-3, C3Xkine, CXC3, CXC3C, NTN, NTT, SCYD1, CX3CL1 , Chemokine (C-X3-C motif) ligand 1, small inducible cytokine subfamily D (Cys-X3-Cys) member 1 (fractalkine, neurotactin), fractalkine, neurotactin. NCBI no.: NP_002987

Molecular Weight: 10.9 kDa (97aa), confirmed by MALDI-TOF.

Pathways: [Synaptic Membrane](#)

Application Details

Restrictions: For Research Use only

Handling

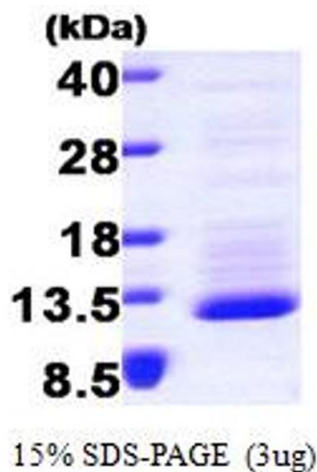
Format: Liquid

Concentration: 0.5 mg/ml (determined by Bradford assay)

Buffer: Liquid. In Phosphate buffered saline (pH7.4), 10% glycerol

Storage: 4 °C

Images



SDS-PAGE

Image 1.