

Datasheet for ABIN666665

CDC42 Protein (AA 1-188) (T7 tag)[Go to Product page](#)**1** Image

Overview

Quantity:	100 µg
Target:	CDC42
Protein Characteristics:	AA 1-188
Origin:	Human
Source:	Escherichia coli (E. coli)
Protein Type:	Recombinant
Purification tag / Conjugate:	This CDC42 protein is labelled with T7 tag.
Application:	SDS-PAGE (SDS)

Product Details

Characteristics:	CDC42, 1- 188 aa, Human, T7-tagged, Recombinant, E.coli
Purity:	> 95 % by SDS - PAGE

Target Details

Target:	CDC42
Alternative Name:	CDC42 (CDC42 Products)
Background:	Cell division cycle 42 isoform 1, also known as CDC42, is a small GTPase of the Rho-subfamily, which regulates signaling pathways that control diverse cellular functions including cell morphology, migration, endocytosis and cell cycle progression. Also, this protein could regulate actin polymerization through its direct binding to Neural Wiskott-Aldrich syndrome protein (N-WASP), which subsequently activates Arp2/3 complex. Loss of CDC42 function caused an

Target Details

increase in the endocytotic uptake of apical proteins, including apical polarity factors such as Crumbs. Recombinant human CDC42, fused to T7-tag at N-terminus, was expressed in E.coli and purified by using conventional chromatography techniques. Synonyms: G25K, Cell division cycle 42 isoform 1 CDC42Hs, Cell division cycle 42, Small GTP binding protein CDC42. NCBI no.: NP_001782

Molecular Weight: 22.4 kDa (203aa), confirmed by MALDI-TOF.

Pathways: [MAPK Signaling](#), [Microtubule Dynamics](#), [RTK Signaling](#), [WNT Signaling](#), [TCR Signaling](#), [EGFR Signaling Pathway](#), [Regulation of Actin Filament Polymerization](#), [Regulation of Muscle Cell Differentiation](#), [Cell-Cell Junction Organization](#), [Maintenance of Protein Location](#), [Skeletal Muscle Fiber Development](#), [Signaling Events mediated by VEGFR1 and VEGFR2](#), [EGFR Downregulation](#), [VEGF Signaling](#)

Application Details

Restrictions: For Research Use only

Handling

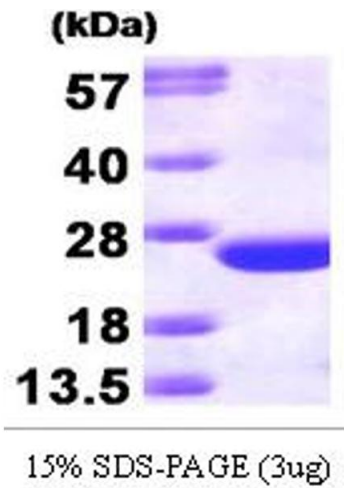
Format: Liquid

Concentration: 1 mg/ml (determined by Bradford assay)

Buffer: Liquid. In 20mM Tris-HCl buffer (pH8.0) containing 1mM DTT, 10% glycerol, 2mM EDTA

Storage: 4 °C

Images



SDS-PAGE

Image 1.