

Datasheet for ABIN666666

**CCL22 Protein (AA 25-93) (His tag)**[Go to Product page](#)**1** Image

## Overview

Quantity:	100 µg
Target:	CCL22
Protein Characteristics:	AA 25-93
Origin:	Human
Source:	Escherichia coli (E. coli)
Protein Type:	Recombinant
Purification tag / Conjugate:	This CCL22 protein is labelled with His tag.
Application:	SDS-PAGE (SDS)

## Product Details

Characteristics:	CCL22/MDC, 25-93 aa, Human, His-tagged, Recombinant, E.coli
Purity:	> 95 % by SDS - PAGE

## Target Details

Target:	CCL22
Alternative Name:	CCL22/MDC ( <a href="#">CCL22 Products</a> )
Background:	CCL22/MDC is a small cytokine belonging to the CC chemokine family. This protein displays chemotactic activity for natural killer cells, chronically activated T lymphocytes, monocytes and dendritic cells. It interacts with cell surface chemokine receptors CCR4. This chemokine may play a role in the trafficking of activated T lymphocytes to inflammatory sites and other aspects of activated T lymphocyte physiology. Recombinant human CCL22/MDC, fused to His-tag at N-

## Target Details

terminus, was expressed as insoluble protein aggregate in E.coli and purified by conventional chromatography, after refolding of the isolated inclusion bodies in a renaturation buffer.

Synonyms: SCYA22, STCP-1 , Chemokine (C-C motif) ligand 22 / Macrophage-Derived Chemokine DC/B CK, A 152E5.1, ABCD 1, ABCD1, CC chemokine STCP 1, ccl 22, CCL22, MGC34554, Small inducible cytokine subfamily A (Cys Cys) member 22, STCP 1, STCP1, Stimulated T cell chemotactic protein 1. NCBI no.: NP\_002981

Molecular Weight: 10.3 kDa (90aa), confirmed by MALDI-TOF.

## Application Details

Restrictions: For Research Use only

## Handling

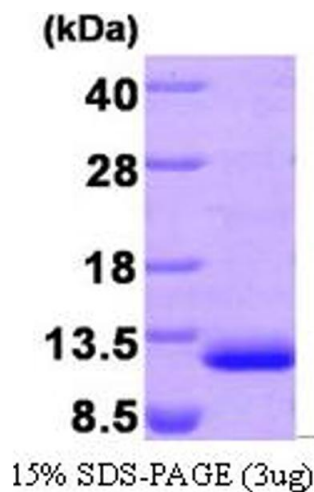
Format: Liquid

Concentration: 0.5 mg/ml (determined by Bradford assay)

Buffer: Liquid. In phosphate-buffered Saline(PBS) pH7.4, 10% glycerol

Storage: 4 °C

## Images



### SDS-PAGE

Image 1.