

Datasheet for ABIN666698 **PPIA Protein (AA 1-165)**



[Go to Product page](#)

1 Image

Overview

Quantity:	100 µg
Target:	PPIA
Protein Characteristics:	AA 1-165
Origin:	Human
Source:	Escherichia coli (E. coli)
Protein Type:	Recombinant
Application:	SDS-PAGE (SDS)

Product Details

Characteristics:	Cyclophilin A, 1-165 aa , Human, Recombinant, E.coli
Purity:	> 95 % by SDS - PAGE

Target Details

Target:	PPIA
Alternative Name:	Cyclophilin A (PPIA Products)
Background:	<p>Cyclophilin A (also known as Peptidylprolyl isomerase A, PPIA) encodes a member of the peptidyl-prolyl cis-trans isomerase family. They are highly-conserved cytoplasmic enzymes that accelerate protein folding. Cyclophilin A is also incorporated into many viruses, including HIV-1, where it has been speculated to be involved in functions such as viral assembly and infectivity. Recombinant human PPIA, was expressed in E.coli and purified by using conventional chromatography techniques. Synonyms: Peptidylprolyl isomerase A, CYPA, CYPH, MGC12404,</p>

Target Details

MGC23397, MGC117158, Cyclophilin A, Cyclosporin A binding protein, Peptidyl prolyl cis trans isomerase A, PPIA, PPIA protein, PPIase A, Rotamase A, RotamaseA, T cell cyclophilin. NCBI no.: NP_066953

Molecular Weight: 20kDa (185aa), confirmed by MALDI-TOF.

Application Details

Restrictions: For Research Use only

Handling

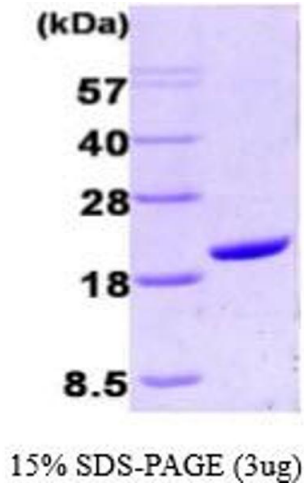
Format: Liquid

Concentration: 1 mg/ml (determined by Bradford assay)

Buffer: In 20mM Tris pH 8.0, .20mM NaCl, 0.5mM DTT, 10% glycerol

Storage: 4 °C

Images



SDS-PAGE

Image 1.