

Datasheet for ABIN666699

IRF2 Protein (AA 1-113) (His tag)[Go to Product page](#)**1** Image

Overview

Quantity:	100 µg
Target:	IRF2
Protein Characteristics:	AA 1-113
Origin:	Human
Source:	Escherichia coli (E. coli)
Protein Type:	Recombinant
Purification tag / Conjugate:	This IRF2 protein is labelled with His tag.
Application:	SDS-PAGE (SDS)

Product Details

Characteristics:	IRF2 , 1-113 aa, Human, His-tagged, Recombinant, E.coli
Purity:	> 95 % by SDS - PAGE

Target Details

Target:	IRF2
Alternative Name:	IRF2 (IRF2 Products)
Background:	<p>Interferon regulatory factor (IRF) 2 is a member of the interferon regulatory transcription factor family. IRF-2 is generally regarded as an oncoprotein. Structure of IRF1 and IRF2 are similar. However, its functions are different. IRF2 competitively inhibits the IRF1-mediated transcriptional activation of interferons alpha and beta, and presumably other genes that employ IRF1 for transcription activation. Recombinant human IRF2 was expressed in E.coli and</p>

Target Details

purified by using conventional chromatography techniques. Synonyms: Interferon regulatory factor 2, DKFZp686F0244, IRF2, IRF2, 1-113 aa His-tagged, IRF-2, Interferon regulatory factor-2 IRF 2. NCBI no.: NM_002190

Molecular Weight: 15 kDa (133 aa), confirmed by MALDI-TOF.

Application Details

Restrictions: For Research Use only

Handling

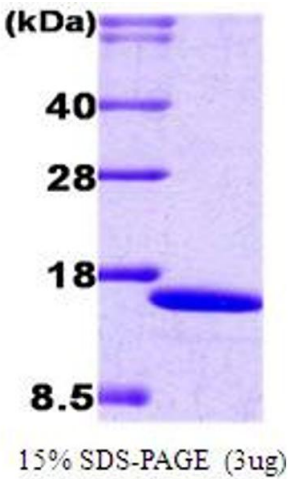
Format: Liquid

Concentration: 1 mg/ml (determined by Bradford assay)

Buffer: In 20mM Tris 8.0, 1mM DTT, 10% Glycerol

Storage: 4 °C

Images



SDS-PAGE

Image 1.